

# RNAV (GPS) RWY 8 ILIAMNA (ILI) (PAIL)

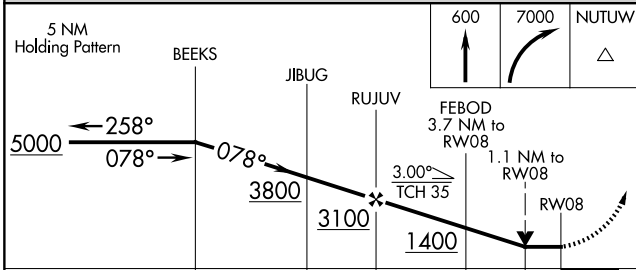
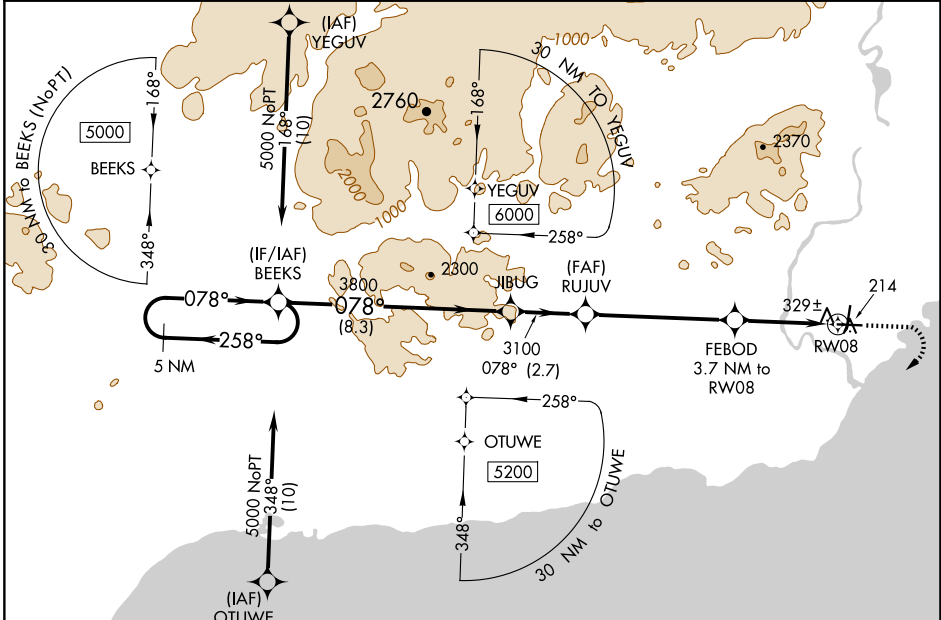
APP CRS <b>078°</b>	Rwy Idg <b>5086</b>
	TDZE <b>192</b>
	Apt Elev <b>192</b>

RNP APCH - GPS.

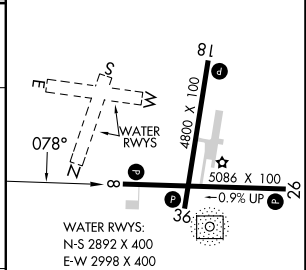
- When local altimeter setting not received, procedure NA.
- Rwy 8 helicopter visibility reduction below 3/4 SM NA.
- 26°C Circling NA to waterways N, S, E, W.

MISSED APPROACH: Climb to 600, then climbing right turn to 7000 direct NUTUW and hold, continue climb-in-hold 7000.

AFIS <b>134.95</b>	ANCHORAGE CENTER <b>118.8</b>	ILIAMNA RADIO <b>123.6 (CTAF) 0</b>
-----------------------	----------------------------------	--



ELEV 192	TDZE 192
----------	----------



CATEGORY	A	B	C	D
LNVA MDA	580-1	388 (400-1)	580-1 1/8	388 (400-1 1/8)
CIRCLING	740-1	548 (600-1)	820-1 3/4 628 (700-1 3/4)	1700-3 1508 (1600-3)

REIL Rwy 26 and 36

MIRL Rwy 8-26 and 18-36

AK, 26 DEC 2024 to 20 FEB 2025

AK, 26 DEC 2024 to 20 FEB 2025