

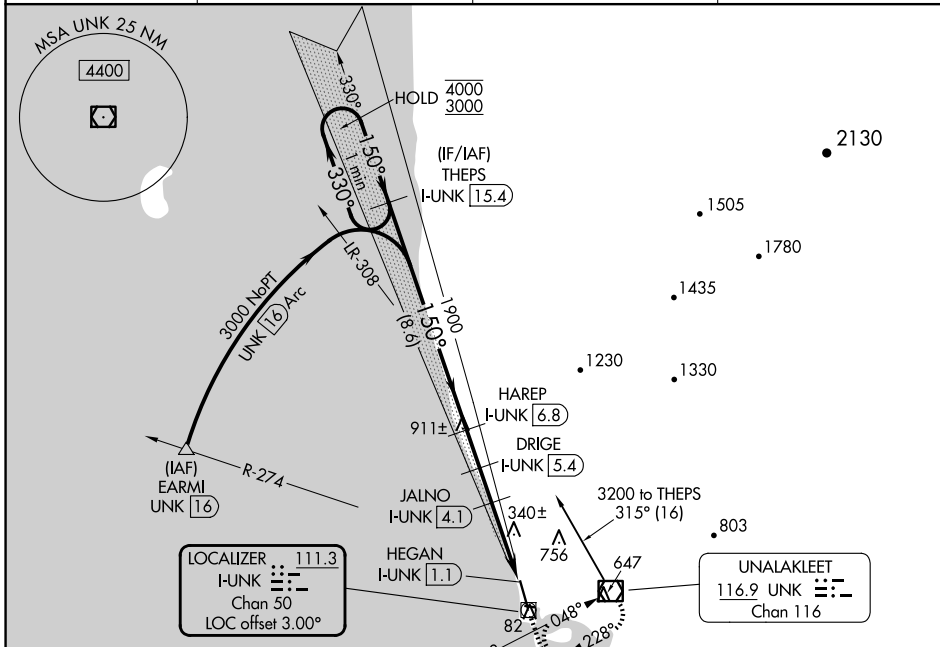
LOC/DME I-UNK 111.3 Chan 50	APP CRS 150°	Rwy Idg 5900 TDZE 27 Apt Elev 27
--	------------------------	---

LOC RWY 15

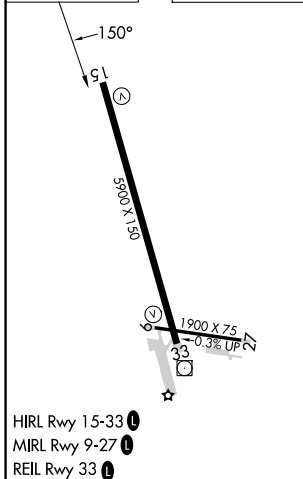
UNALAKLEET (UNK)(PAUN)

DME required.	MISSED APPROACH: Climb to 1900 then climbing right turn to 3400 direct UNK VOR/DME and hold, continue climb-in-hold to 3400.
---------------	--

AWOS-3P 132.25	ANCHORAGE CENTER 135.7 335.5	NOME RADIO 122.3	CTAF 123.0
--------------------------	--	----------------------------	----------------------



ELEV 27	TDZE 27
----------------	----------------



Procedure NA for arrivals at UNK VOR/DME on V440 eastbound.

	THEPS I-UNK [15.4]	HAREP I-UNK [6.8]	DRIGE I-UNK [5.4]	JALNO I-UNK [4.1]	I-UNK [2.5]	HEGAN I-UNK [1.1]	UNK
One Minute Holding Pattern	4000 ← 330°	3000 → 150°	1900	1440	1020		
	8.6 NM	1.4 NM	1.3 NM	1.6 NM	1.4 NM		
CATEGORY	A	B	C	D			
S-LOC 15	520-1	493 (500-1)	520-1 3/8	493 (500-1 3/8)			
CIRCLING	600-1 573 (600-1)	700-1 673 (700-1)	700-2 673 (700-2)	900-2 3/4 873 (900-2 3/4)			

AK, 26 DEC 2024 to 20 FEB 2025

AK, 26 DEC 2024 to 20 FEB 2025