

MILTON, FLORIDA

ILS Y or LOC Y RWY 32

LOC/DME I-NDZ 110.55 Chan 42(Y)	APCH CRS 319°	Rwy Ldg TDZE Arprt Elev 6002 172 177
---	-------------------------	--

AL-1909 [UNJ]

WHITING FLD NAS - SOUTH (KNDZ)

TACAN, DME required.

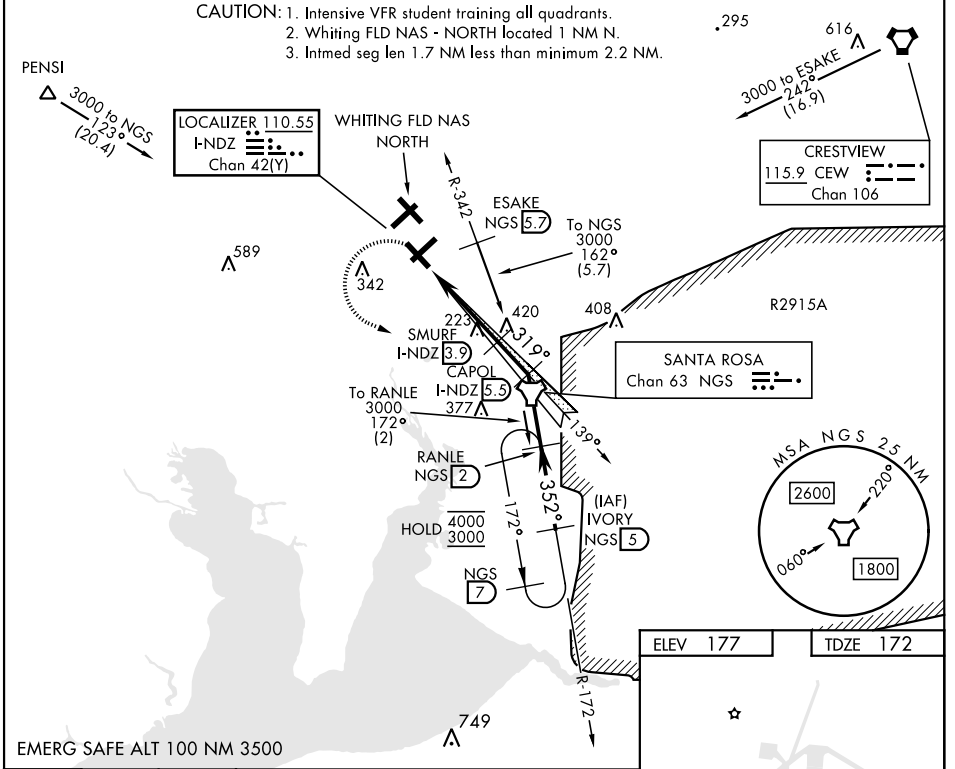
▼ * When ALS inop, increase vis to ¾ mile.
 ** When ALS inop, increase vis to 1 mile.
 *** Circling not authorized N of Rwy 14 and 23.

MALS R (AS)

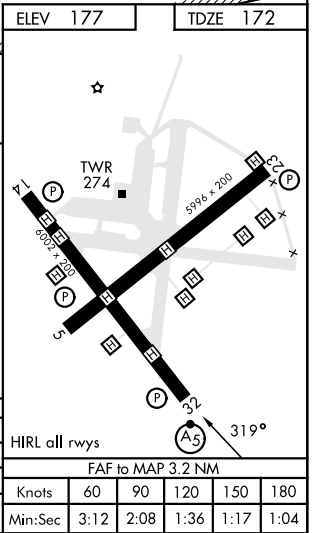
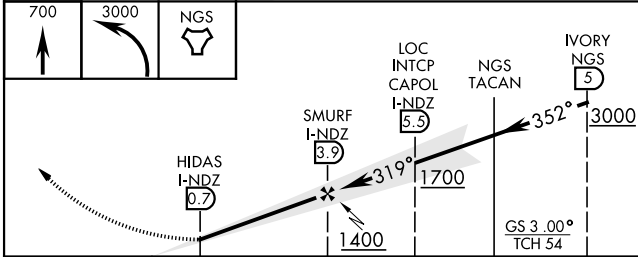
MISSED APPROACH: Climb to 700, then climbing left turn to 3000 direct NGS TACAN. Then via R-172 to RANLE and hold continue climb in hold. Contact Pensacola Approach Control.

ATIS 273.575	PENSACOLA APP CON 124.85 235.775	SOUTH WHITING TOWER 123.075 348.675	GND CON 317.65	CLNC DEL 355.6	ASR/ PAR
------------------------	--	---	--------------------------	--------------------------	----------

- CAUTION: 1. Intensive VFR student training all quadrants.
 2. Whiting FLD NAS - NORTH located 1 NM N.
 3. Intmed seg len 1.7 NM less than minimum 2.2 NM.



EMERG SAFE ALT 100 NM 3500



CATEGORY	A	B	C	D
S-ILS 32*		372-½	200 (200-½)	
S-LOC 32**		480-½	308 (400-½)	
● CIRCLING***	580-1 403 (500-1)	640-1 463 (500-1)	660-1½ 483 (500-1½)	740-2 563 (600-2)

HIRL all rwy's

FAF to MAP 3.2 NM					
Knots	60	90	120	150	180
Min:Sec	3:12	2:08	1:36	1:17	1:04

MILTON, FLORIDA
Orig 10AUG23

30°42'N-87°01'W

WHITING FLD NAS - SOUTH (KNDZ)

ILS Y or LOC Y RWY 32

SE-3, 23 JAN 2025 to 20 FEB 2025

SE-3, 23 JAN 2025 to 20 FEB 2025