

# TACAN RWY 32

TACAN NGS Chan <b>63</b>	APCH CRS <b>322°</b>	Rwy ldg TDZE Arprt Elev <b>6002</b> <b>172</b> <b>177</b>
-----------------------------	-------------------------	--

[USN]

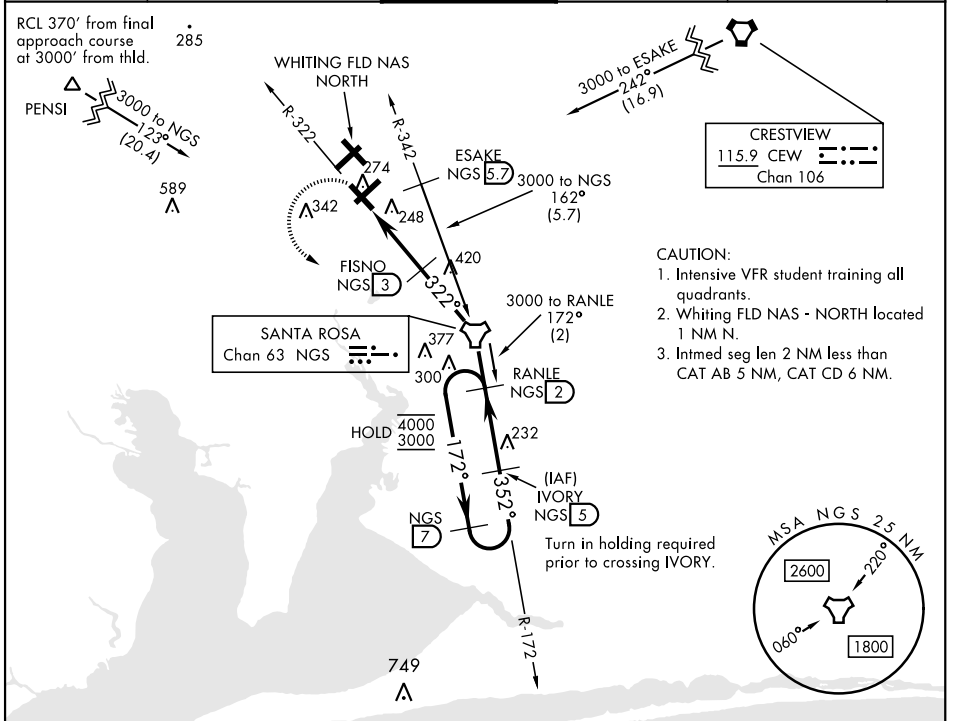
WHITING FLD NAS - SOUTH (KNDZ)

▼ \* When ALS inop, increase vis to 1 mile.  
\*\* Circling not authorized N of Rwy 14 and 23.

MALSR AS

MISSED APPROACH: Climb to 600, then climbing left turn to 3000 direct NGS TACAN. Then via R-172 to RANLE and hold. Continue climb in hold. Contact Pensacola APP CON.

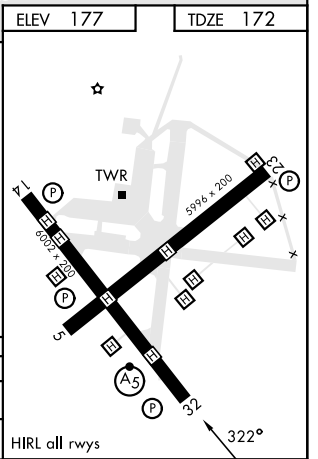
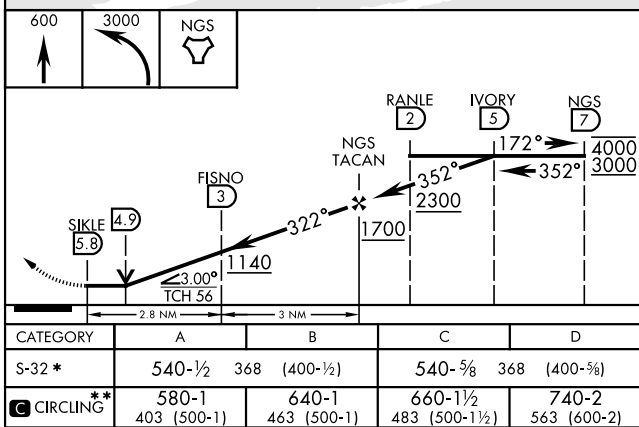
ATIS ★ <b>273.575</b>	PENSACOLA APP CON <b>124.85 235.775</b>	SOUTH WHITING TOWER ★ <b>123.075 348.675</b>	GND CON <b>317.65</b>	CLNC DEL <b>355.6</b>	ASR/ PAR
--------------------------	--	---	--------------------------	--------------------------	-------------



SE-3, 23 JAN 2025 to 20 FEB 2025

SE-3, 23 JAN 2025 to 20 FEB 2025

EMERG SAFE ALT 100 NM 3500



CATEGORY	A	B	C	D
S-32 *	540-½ 368	400-½	540-⅝ 368	400-⅝
** CIRCLING	580-1 403 (500-1)	640-1 463 (500-1)	660-1½ 483 (500-1½)	740-2 563 (600-2)

HIRL all rwy's

# TACAN RWY 32