

LOC/DME I-OTZ 110.7 Chan 44	APP CRS 089°	Rwy Idg TDZE Apt Elev	5900 13 15
---	------------------------	-----------------------------	---------------------------------------

ILS or LOC RWY 9

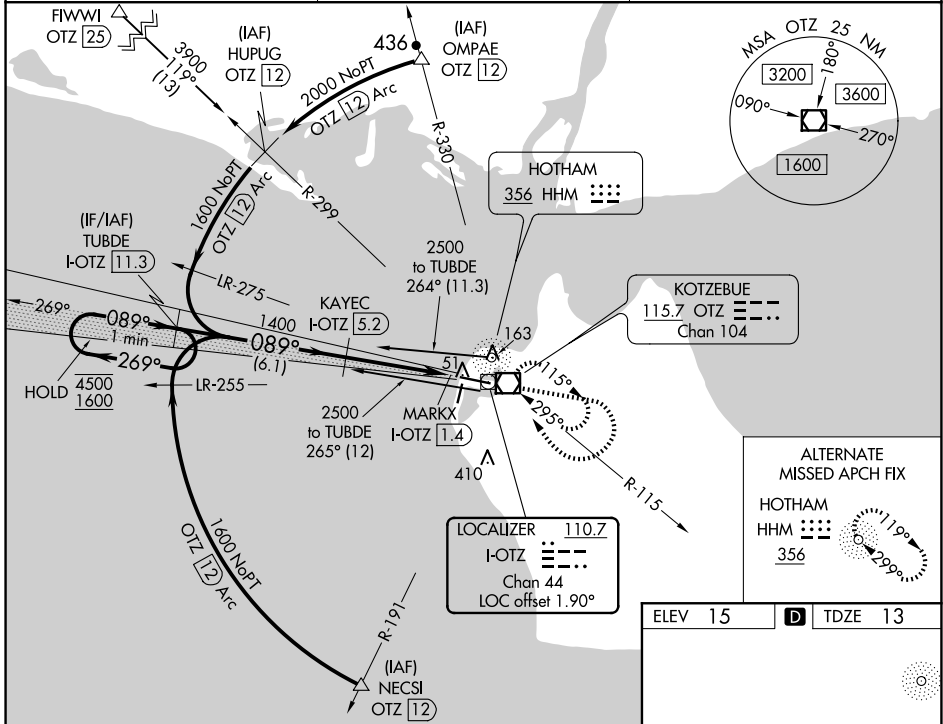
RALPH WIEN MEML (OTZ) (PAOT)

DME required.

⚠ Circling Rwy 18, 36 NA at night, Circling Rwy 27 at night, operational VGS1 required, remain on or above VGS1 glidepath until threshold. Rwy 9 helicopter visibility reduction below RVR 4000 NA.

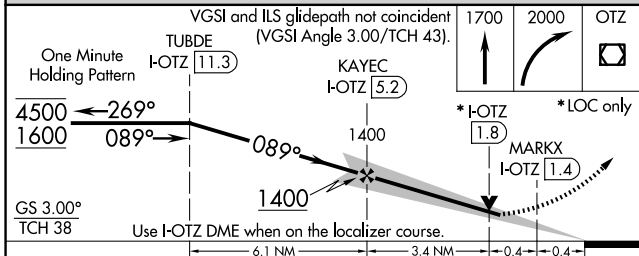
MISSED APPROACH: Climb to 1700 then climbing right turn to 2000 direct OTZ VOR/DME and hold, continue climb-in-hold to 2000.

AFIS 135.45	ANCHORAGE CENTER 119.2 263.0	KOTZEBUE RADIO 123.6 (CTAF) 0
-----------------------	--	---



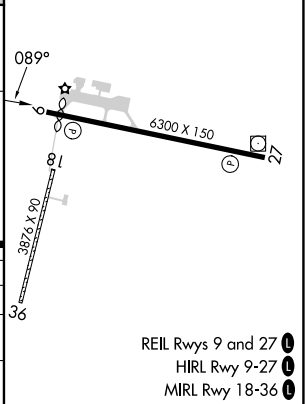
AK, 26 DEC 2024 to 20 FEB 2025

AK, 26 DEC 2024 to 20 FEB 2025



ELEV 15	D TDZE 13
---------	------------------

CATEGORY	A	B	C	D
S-ILS 9	263/50		250 (300-1)	
S-LOC 9	320/55	307 (400-1)	320/50	307 (400-1)
C CIRCLING	520-1	505 (600-1)	720-2 705 (800-2)	720-2¼ 705 (800-2¼)



- REIL Rwys 9 and 27 **0**
- HIRL Rwy 9-27 **0**
- MIRL Rwy 18-36 **0**