

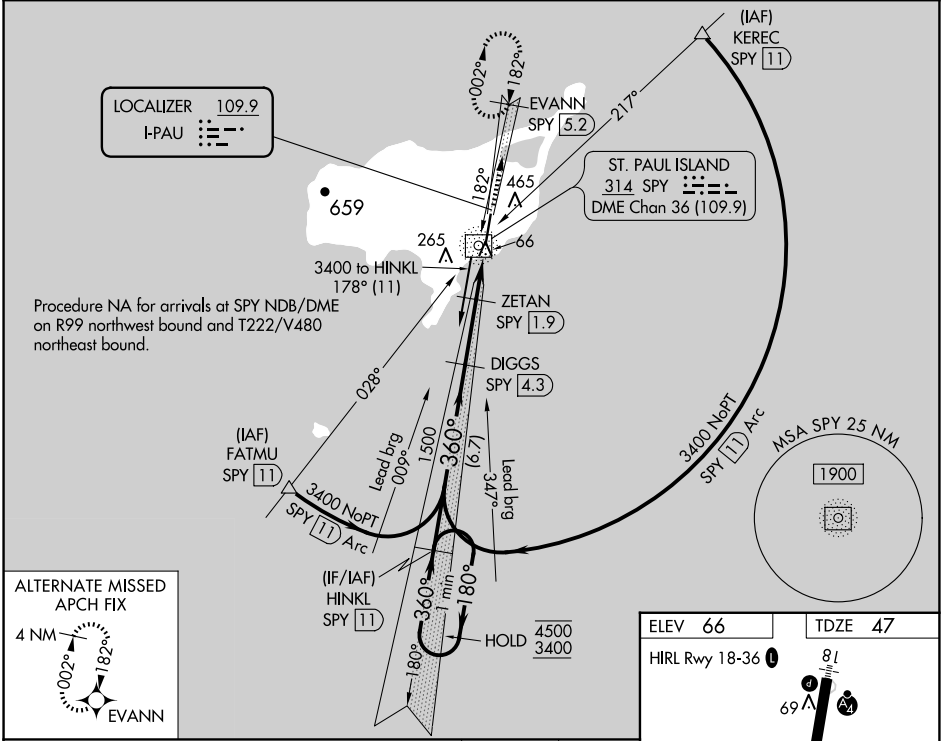
LOC I-PAU 109.9	APP CRS 360°	Rwy ldg 6500	TDZE 47
		Apt Elev 66	

ILS or LOC RWY 36

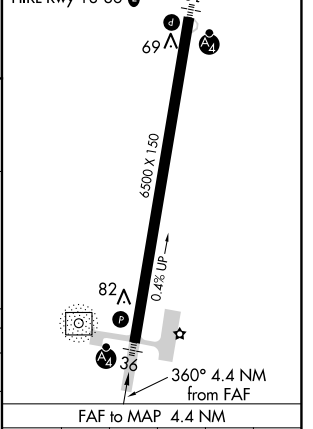
ST PAUL ISLAND (SNP)(PASN)

ADF and DME required for procedure entry. DME required.		MALSF	MISSED APPROACH: Climb to 2700 on I-PAU north course (360°) to EVANN/SPY 5.2 DME and hold, continue climb-in-hold to 2700.
<p>∇ Circling NA west of Rwy 18-36. Inop table does not apply to S-ILS.</p> <p>⚠ When local altimeter setting not received, procedure NA. DME from SPY NDB/DME. Simultaneous reception of I-PAU and SPY DME required.</p>			

ASOS 135.75	ANCHORAGE CENTER 119.1 339.8	CTAF 122.3 0
-----------------------	--	-------------------------------



ELEV 66	TDZE 47
---------	---------



One Minute Holding Pattern	HINKL SPY 11	DIGGS SPY 4.3	ZETAN SPY 1.9	EVANN SPY 5.2
4500 ← 180°		1480	2700	
3400 → 360°			I-PAU N crs (360°)	
GS 3.00°	1500		*LOC only	
TCH 50			*SPY 0.9	SPY 0.3
6.7 NM		2.4 NM	1 NM	1 NM
CATEGORY	A	B	C	D
S-ILS 36	247-¾ 200 (200-¾)			
S-LOC 36	380-¾ 333 (400-¾)			
C CIRCLING	800-1 734 (800-1)		800-2 734 (800-2)	800-2¼ 734 (800-2¼)

AK, 26 DEC 2024 to 20 FEB 2025

AK, 26 DEC 2024 to 20 FEB 2025