

LOC I-PAU <b>109.9</b>	APP CRS <b>180°</b>	Rwy ldg <b>6500</b> TDZE <b>66</b> Apt Elev <b>66</b>
---------------------------	------------------------	---

# LOC/DME BC RWY 18

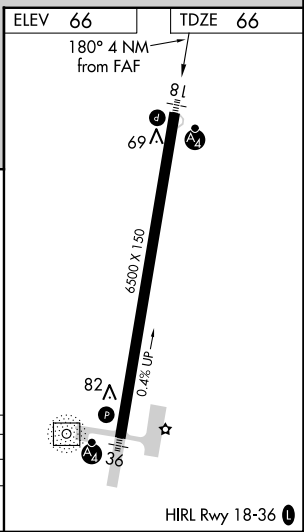
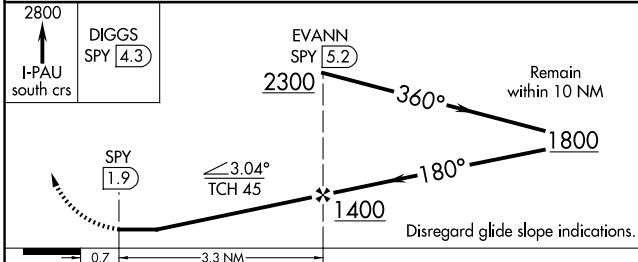
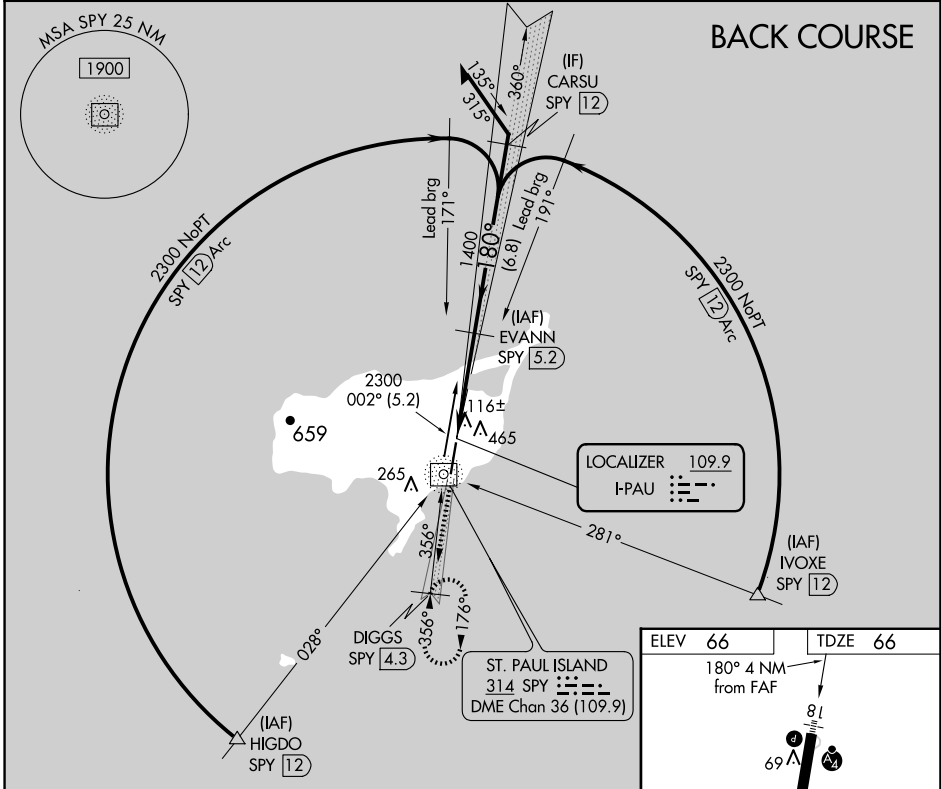
ST PAUL ISLAND (SNP) (PASN)

**▼** Inoperative table does not apply. Circling NA west of Rwy 18-36. Rwy 18 helicopter visibility reduction below 1 SM NA. DME from SPY NDB/DME. Simultaneous reception of I-PAU and SPY DME required.

**MALSF**

**MISSED APPROACH:** Climb to 2800 via I-PAU south course to DIGGS/SPY 4.3 DME and hold, continue climb-in-hold to 2800.

ASOS <b>135.75</b>	ANCHORAGE CENTER <b>119.1 339.8</b>	CTAF <b>122.3 0</b>
-----------------------	--	------------------------



CATEGORY	A	B	C	D
S-18	580-1 514 (600-1)		580-1½ 514 (600-1½)	
<b>CIRCLING</b>	800-1 734 (800-1)		800-2 734 (800-2)	800-2¼ 734 (800-2¼)

AK, 26 DEC 2024 to 20 FEB 2025

AK, 26 DEC 2024 to 20 FEB 2025