

NDB/DME LUR <b>385</b> Chan <b>20</b> (Y)	APCH CRS <b>235°</b>	Rwy Idg THRE Arprt Elev <b>4800</b> <b>N/A</b> <b>14</b>
---	-------------------------	---

[USAF]

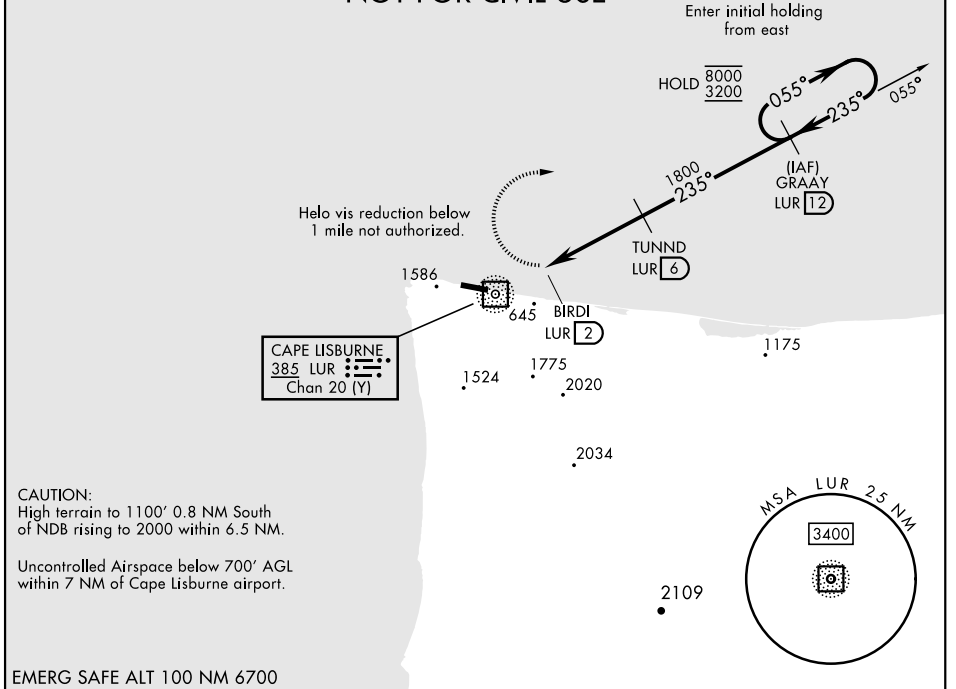
CAPE LISBURNE LRRS (PALU)

▼ \* Circling not authorized S of Rwy 9-27.  
Night operations not authorized.

MISSED APPROACH: Climbing right turn to 3200, intercept LUR 055° bearing to GRAAY and hold.

ANCHORAGE CENTER <b>119.65 363.25</b>	KOTZEBUE RADIO ★ <b>122.3</b>	CTAF <b>126.2</b>
--	----------------------------------	----------------------

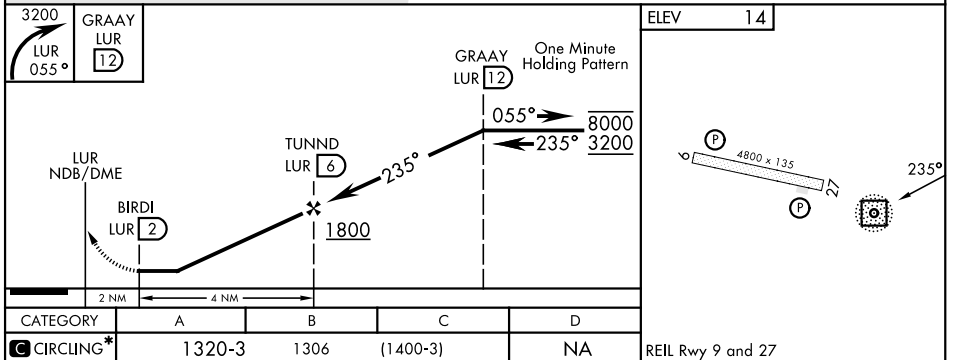
**MILITARY CERTIFIED  
AIRCREWS OR AUTHORIZED  
CONTRACT AIRCRAFT ONLY  
NOT FOR CIVIL USE**



CAUTION:  
High terrain to 1100' 0.8 NM South  
of NDB rising to 2000 within 6.5 NM.

Uncontrolled Airspace below 700' AGL  
within 7 NM of Cape Lisburne airport.

EMERG SAFE ALT 100 NM 6700



AK, 26 DEC 2024 to 20 FEB 2025

AK, 26 DEC 2024 to 20 FEB 2025