

NORTH, SOUTH CAROLINA

RNAV (GPS) RWY 6

APCH CRS 061°	Rwy Idg 9003
	TDZE 281
	Arprt Elev 321

AL-3017 (USAF)

NORTH AF AUX (KXNO)

RNP APCH.

MISSED APPROACH: Climb to 2000 direct BLOYD and hold.

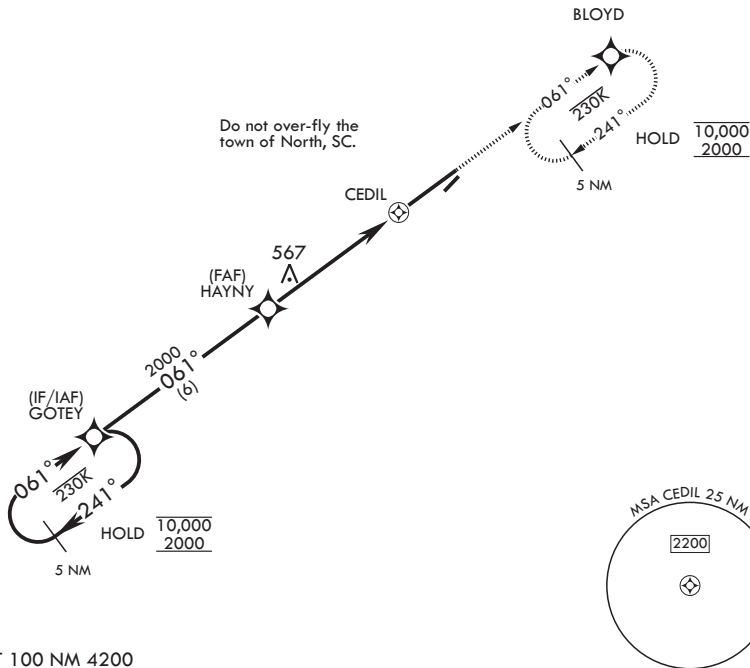
▼ * Circling NA to Assault Strip.

ASOS 118.525	COLUMBIA APP CON/DEP CON 124.15 338.2	LZ/DZ OPS FAC 120.475 235.775
------------------------	---	---

CAUTION: Uncontrolled airspace below 700 ft AGL.

535

Do not over-fly the town of North, SC.



EMERG SAFE ALT 100 NM 4200

<p>2000 BLOYD ELEV 321 TDZE 281</p> <p>Rwy 6 Idg 9003' Rwy 24 Idg 8999'</p>	
<p>5 NM Holding Pattern</p> <p>10,000 2000 061° 241° GOTEY HAYNY 2000 061° 2000</p> <p>3.16° ≥ TCH 50</p> <p>1 NM to CEDIL CEDIL 0.5</p> <p>4.5 NM</p>	
CATEGORY	A B C D E
LNAV MDA	880-1 599 (600-1) 880-1¼ 599 (600-1¼)
CIRCLING*	940-1 619 (700-1) 940-1¼ 619 (700-1¼) 1400-3 1079 (1100-3)

HIRL Rwy 6-24

SE-2, 23 JAN 2025 to 20 FEB 2025

SE-2, 23 JAN 2025 to 20 FEB 2025

NORTH, SOUTH CAROLINA

33°37'N - 81°05'W

NORTH AF AUX (KXNO)

Amdt 3 29DEC22

RNAV (GPS) RWY 6