

RNAV (GPS) RWY 23

APCH CRS	Rwy Idg	5018
230°	TDZE	34
	Arprt Elev	41

[USA]

CAMP PEARY LNDG STRIP (KW94)

RNP APCH - GPS

Available Type Unknown

MISSED APPROACH: Climb to 2000 direct GAGVE and hold.

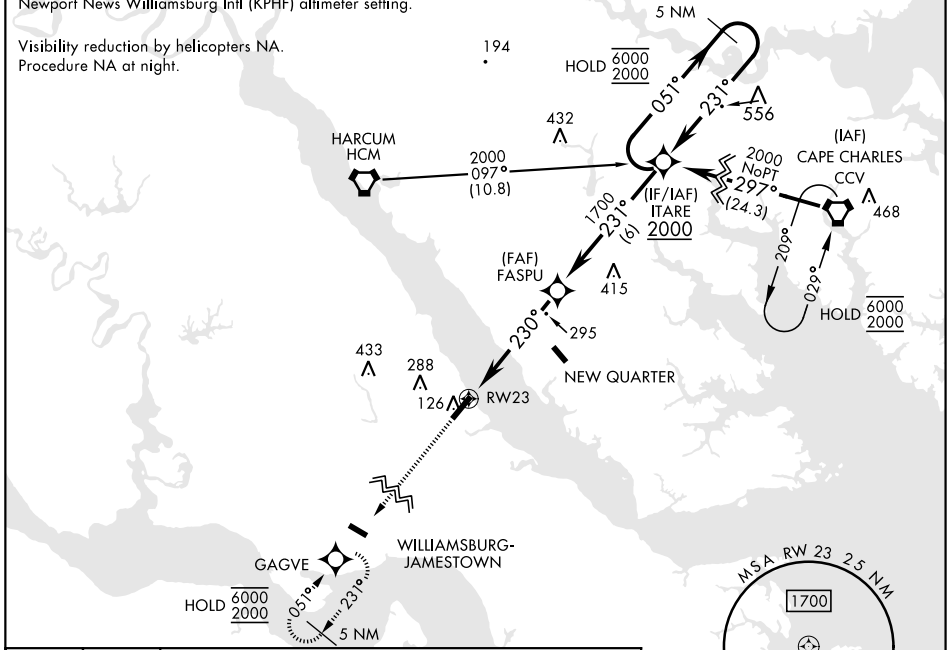
Restricted airfield, PPR. Contact Camp Peary Ops prior to landing. Williamsburg Jamestown (KJGG) Primary altimeter setting.

WILLIAMSBURG-JAMESTOWN AWOS-3
120.625

NORFOLK APP CON
125.7 335.625

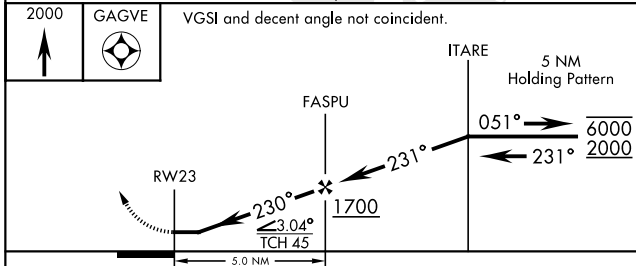
When primary altimeter setting (KJGG) not received, use Newport News Williamsburg Intl (KPHF) altimeter setting.

Visibility reduction by helicopters NA.
Procedure NA at night.



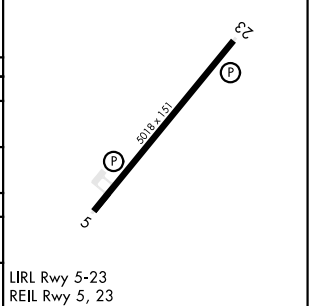
NE-3, 23 JAN 2025 to 20 FEB 2025

NE-3, 23 JAN 2025 to 20 FEB 2025



ELEV	41	TDZE	34
Rwy 05-23 Lead-In SFL.			230°

CATEGORY	A	B	C	D
LNVA MDA	560-1	526 (600-1)	560-1½	526 (600-1½)
CIRCLING	560-1 519 (600-1)	620-1 579 (600-1)	620-1½ 579 (600-1½)	760-2¼ 719 (800-2¼)
NEWPORT NEWS / WILLIAMSBURG INTL ALTIMETER SETTING MINIMUMS				
LNVA MDA	580-1	546 (600-1)	580-1⅝	546 (600-1⅝)
CIRCLING	580-1 539 (600-1)	620-1 579 (600-1)	620-1⅝ 579 (600-1⅝)	780-2¼ 739 (800-2¼)



RNAV (GPS) RWY 23