

RNAV (GPS) RWY 5

APCH CRS **050°**
 Rwy Idg **5018**
 TDZE **41**
 Arpt Elev **41**

[USA]

CAMP PEARY LNDG STRIP (KW94)

RNP APCH - GPS

Available Type Unknown

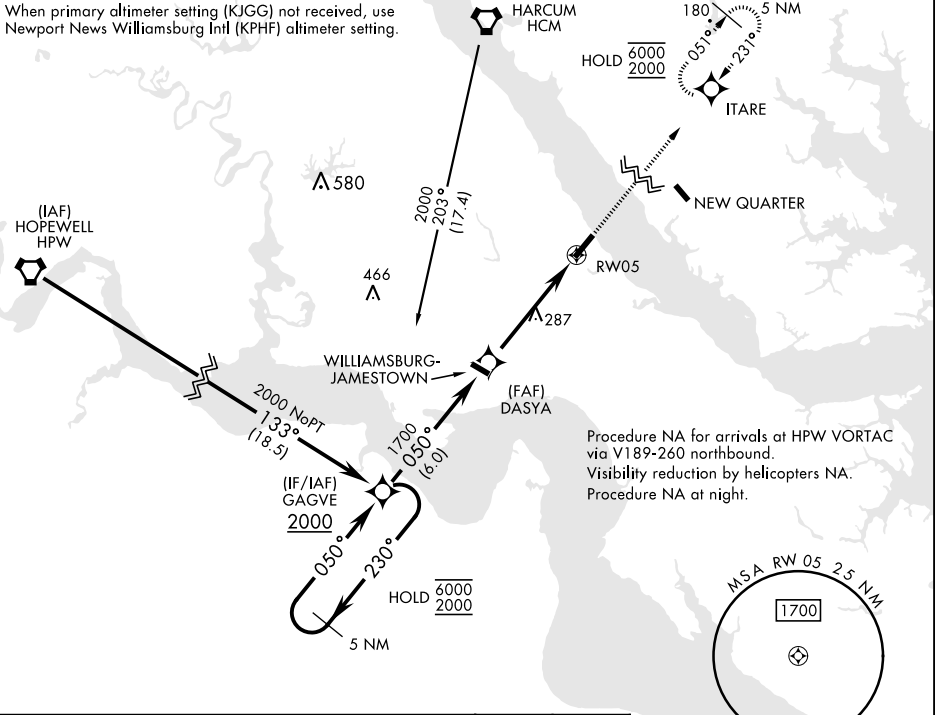
MISSED APPROACH: Climb to 2000 direct ITARE and hold.

▼ Restricted airfield, PPR. Contact Camp Peary Ops prior to landing. Williamsburg Jamestown (KJGG) primary altimeter setting.

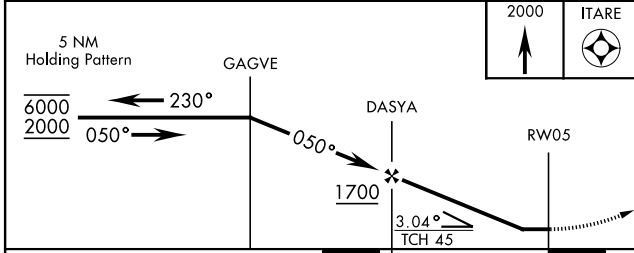
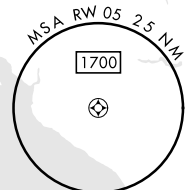
WILLIAMSBURG-JAMESTOWN AWOS-3
120.625

NORFOLK APP CON
125.7 335.625

When primary altimeter setting (KJGG) not received, use Newport News Williamsburg Intl (KPHF) altimeter setting.

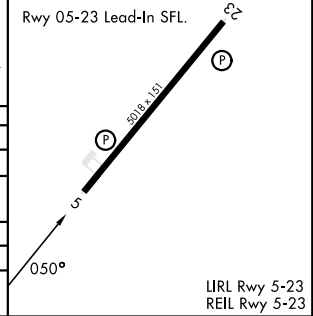


Procedure NA for arrivals at HPW VORTAC via V189-260 northbound.
 Visibility reduction by helicopters NA.
 Procedure NA at night.



ELEV 41 | TDZE 41

CATEGORY	A	B	C	D
LNVA MDA	600-1	559 (600-1)	600-1 $\frac{5}{8}$	559 (600-1 $\frac{1}{2}$)
CIRCLING	600-1	620-1	620-1 $\frac{5}{8}$	760-2 $\frac{1}{4}$
	559 (600-1)	579 (600-1)	579 (600-1 $\frac{5}{8}$)	719 (800-2 $\frac{1}{4}$)
NEWPORT NEWS / WILLIAMSBURG INTL ALTIMETER SETTING				
LNVA MDA	640-1	599 (600-1)	640-1 $\frac{3}{4}$	599 (600-1 $\frac{3}{4}$)
CIRCLING	640-1	599 (600-1)	640-1 $\frac{3}{4}$	780-2 $\frac{1}{4}$
			599 (600-1 $\frac{3}{4}$)	739 (800-2 $\frac{1}{4}$)



LRL Rwy 5-23
 REL Rwy 5-23

RNAV (GPS) RWY 5

NE-3, 23 JAN 2025 to 20 FEB 2025

NE-3, 23 JAN 2025 to 20 FEB 2025