

WAAS CH 82702 W28A	APP CRS 276°	Rwy Idg TDZE Apt Elev	4199 673 673
--	------------------------	-----------------------------	---

RNAV (GPS) RWY 28

WOOD COUNTY (1G \emptyset)

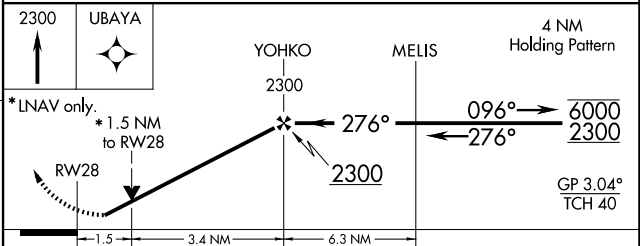
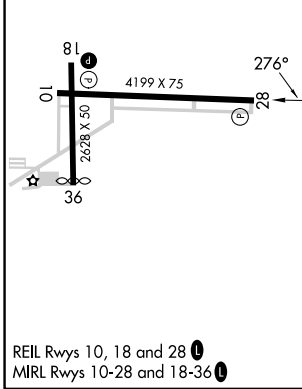
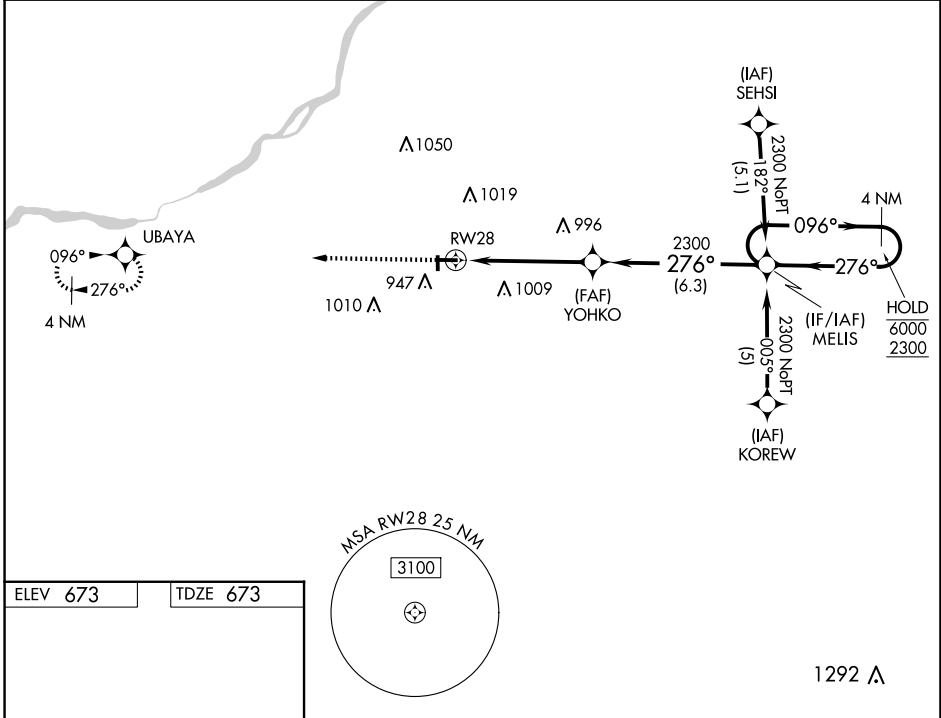
RNP APCH.

▼ Circling Rwy 36 NA at night. Rwy 28 helicopter visibility reduction below $\frac{3}{4}$ SM NA. VDP NA when using Toledo Express altimeter setting.

▲ NA When local altimeter setting not received, use Toledo Express altimeter setting: increase DA to 958 feet; increase all MDA 40 feet and LNAV Cat C visibility $\frac{1}{8}$ SM, Circling Cats C/D visibility $\frac{1}{4}$ SM.

MISSED APPROACH: Climb to 2300 direct UBAYA and hold.

AWOS-3 120.725	TOLEDO APP CON 126.1 317.55	CLNC DEL 125.6	UNICOM 122.975 (CTAF) \emptyset
--------------------------	---------------------------------------	--------------------------	--



CATEGORY	A	B	C	D
LPV DA	923-1 250 (300-1)			
LNAV MDA	1200-1	527 (600-1)	1200-1 $\frac{1}{2}$ 527 (600-1 $\frac{1}{2}$)	1200-1 $\frac{3}{4}$ 527 (600-1 $\frac{3}{4}$)
CIRCLING	1300-1	627 (700-1)	1320-1 $\frac{3}{4}$ 647 (700-1 $\frac{3}{4}$)	1320-2 647 (700-2)

EC-2, 23 JAN 2025 to 20 FEB 2025

EC-2, 23 JAN 2025 to 20 FEB 2025