


WAAS CH <b>72601</b> <b>W32A</b>	APP CRS <b>319°</b>	Rwy Idg TDZE Apt Elev	<b>6500</b> <b>937</b> <b>937</b>
--	------------------------	-----------------------------	---

# RNAV (GPS) RWY 32

DELAWARE COUNTY RGNL (MIE)

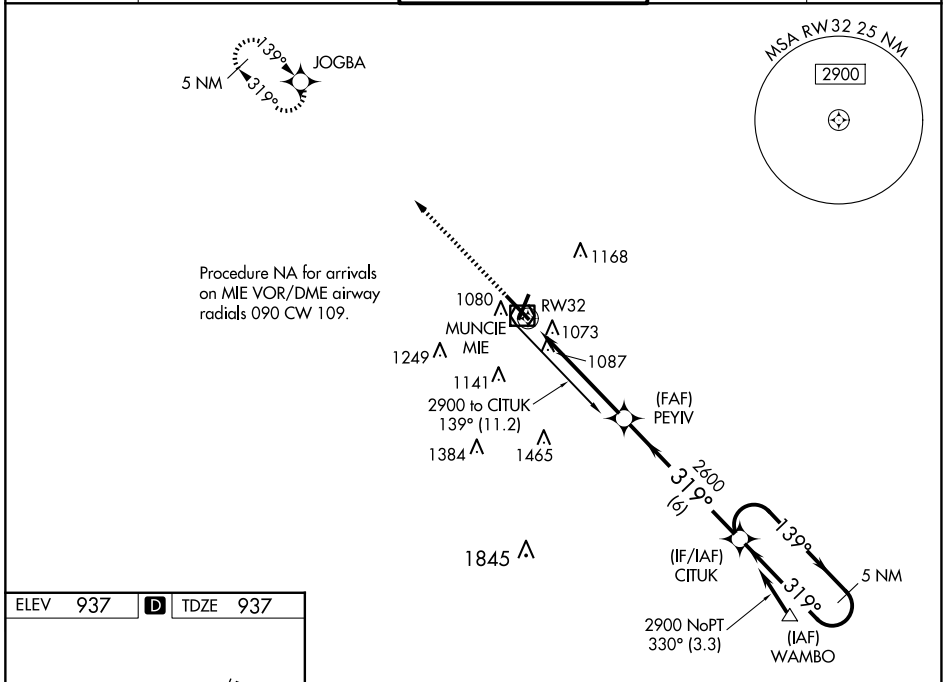
**⚠** For uncompensated Baro-VNAV systems, LNAV/VNAV NA below -16°C (4°F) or above 47°C (116°F). DME/DME RNP-0.3 NA. Baro-VNAV and VDP NA when using Fort Wayne Intl altimeter setting. For inop MALSRS when using Fort Wayne Intl altimeter setting, increase LPV all Cats visibility to 1½ mile. When local altimeter setting not received, use Fort Wayne Intl altimeter setting and increase DA 121 feet; increase LPV and LNAV/VNAV all Cats visibility by ½ mile; increase all MDA 140 feet and LNAV visibility Cats C and D to 1¼; increase Circling visibility Cats C and D by ¼ mile. For inop MALSRS, increase all LPV Cats visibility to 1 SM.

MALSRS

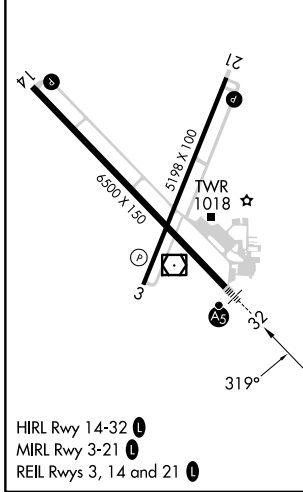


MISSED APPROACH:  
Climb to 2800 direct JOGBA and hold.

ATIS <b>133.25</b>	INDIANAPOLIS APP CON <b>120.65 317.8</b>	MUNCIE TOWER ★ <b>120.1 (CTAF) 0</b>	GND CON <b>121.9</b>	UNICOM <b>122.95</b>
-----------------------	---	---	-------------------------	-------------------------



ELEV 937	<b>D</b> TDZE 937
----------	-------------------



2800	JOGBA	CITUK 5 NM Holding Pattern	
*LNAV only.	*1.2 NM to RW32	PEYIV 2600	2900
RW32		2600	GP 3.04° TCH 52
1.2		3.8 NM	6 NM
CATEGORY	A	B	C
LPV DA	1241-½ 304 (400-½)		
LNAV/VNAV DA	1396-1⅛ 459 (500-1⅛)		
LNAV MDA	1460-½ 523 (600-½)		1460-1 523 (600-1)
<b>C</b> CIRCLING	1460-1 523 (600-1)		1480-1½ 543 (600-1½) 1560-2 623 (700-2)

EC-2, 23 JAN 2025 to 20 FEB 2025

EC-2, 23 JAN 2025 to 20 FEB 2025