

APP CRS	Rwy Idg	<b>9200</b>
<b>228°</b>	TDZE	<b>9</b>
	Apt Elev	<b>32</b>

# RNAV (GPS) RWY 23

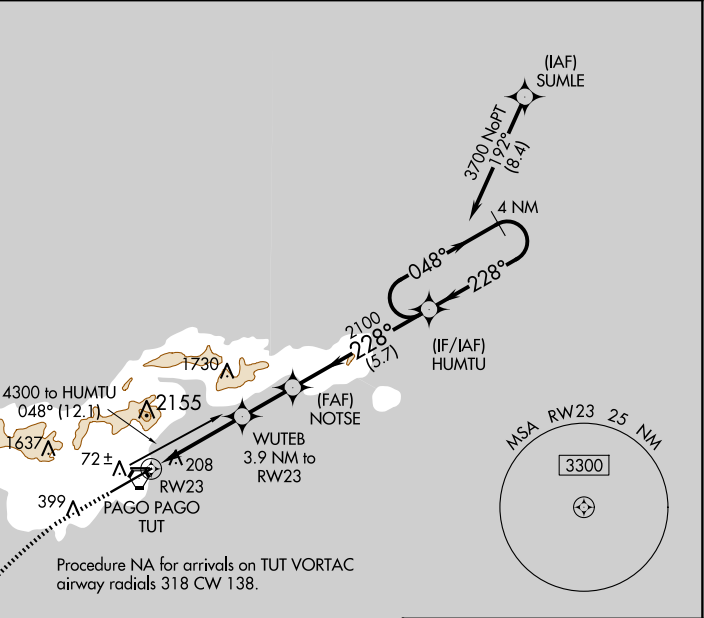
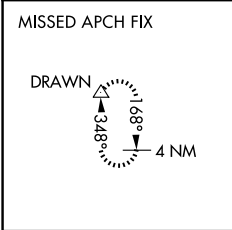
PAGO PAGO INTL (PPG) (NSTU)

RNP APCH.

**⚠** For uncompensated Baro-VNAV systems, LNAV/VNAV NA below 22°C or above 54°C. When local altimeter setting not received, procedure NA. Circling NA northwest of Rwy 5-23.

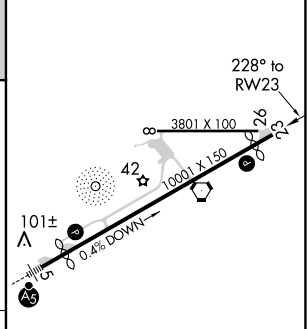
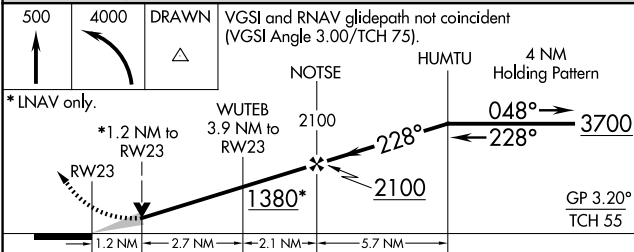
MISSED APPROACH: Climb to 500 then climbing left turn to 4000 direct DRAWN and hold.

AWOS-3PT <b>127.925</b>	FALEOLO APP CON <b>118.1 6.553 (HF)</b>	CTAF <b>122.9</b>	<b>118.3</b>
----------------------------	--	----------------------	--------------



Procedure NA for arrivals on TUT VORTAC airway radials 318 CW 138.

ELEV 32	<b>D</b> TDZE 9
---------	-----------------



CATEGORY	A	B	C	D
LNAV/VNAV DA	489-1 $\frac{3}{8}$ 480 (500-1 $\frac{3}{8}$ )			
LNAV MDA	460-1	451 (500-1)	460-1 $\frac{3}{8}$	451 (500-1 $\frac{3}{8}$ )
<b>C</b> CIRCLING	520-1 488 (500-1)	700-1 668 (700-1)	820-2 $\frac{1}{4}$ 788 (800-2 $\frac{1}{4}$ )	860-2 $\frac{3}{4}$ 828 (900-2 $\frac{3}{4}$ )

HIRL Rwy 5-23 and 8-26