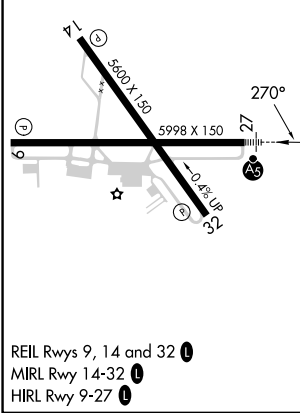
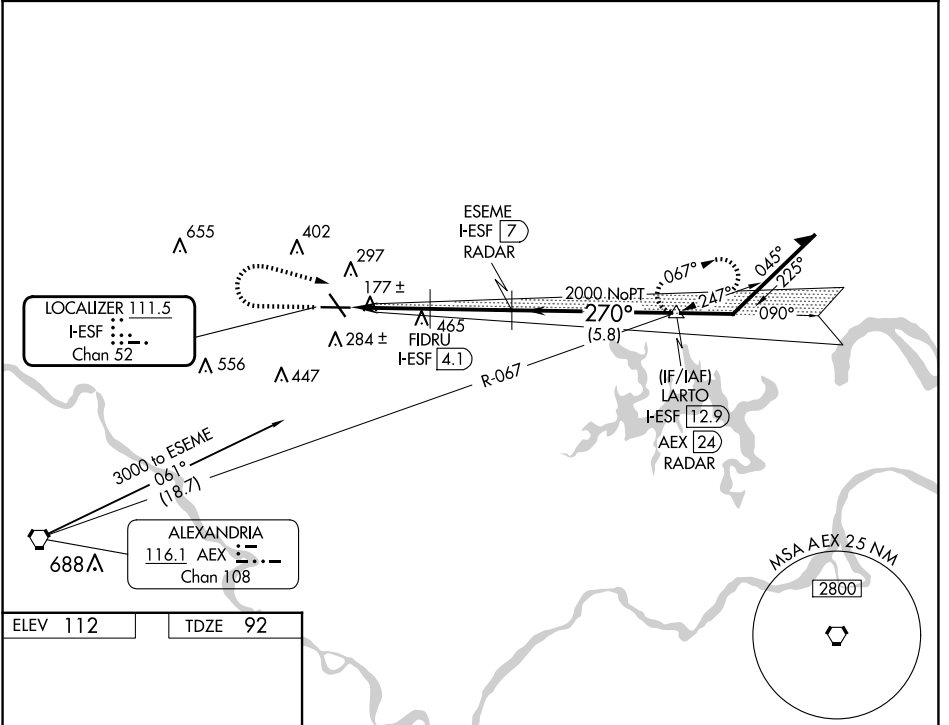


LOC I-ESF 111.5 Chan 52	APP CRS 270°	Rwy Idg TDZE 92 Apt Elev 112	5998
---	------------------------	--	-------------

ILS or LOC/DME RWY 27

ESLER RGNL (E/SF)

RADAR or DME required.		MALSRS	MISSED APPROACH: Climb to 1500 then climbing right turn to 3000 on heading 120° and on AEX VORTAC R-067 to LARTO/AEX 24.1 DME/RADAR and hold.
<p>⚠ Circling Rwy 14, 32 NA at night. VDP NA with Alexandria Intl altimeter setting. When local altimeter not received, use Alexandria Intl altimeter setting and increase DA to 327 feet; increase all MDA to 40 feet and Circling visibility Cat D ¼ SM. For inop MALSRS, increase S-LOC 27 Cat C/D visibility to 1 SM.</p>			
ESF ASOS 119.425	POLK APP CON 125.4 254.8	UNICOM 122.8 (CTAF) 0	



1500	3000	AEX R-067	LARTO AEX [24.1] RADAR	ESEME I-ESF [7] RADAR	Remain within 10 NM
*LOC only.					
*1060		FIDRU I-ESF [4.1]	I-ESF [1.2]	I-ESF [2.1]	GS 3.00° TCH 59
-0.9		-2 NM		-2.9 NM	
CATEGORY	A	B	C	D	
S-ILS 27	292-½		200 (200-½)		
S-LOC 27	440-½ 348 (400-½)		440-⅝ 348 (400-⅝)		
CIRCLING	600-1 488 (500-1)		740-1¾ 628 (700-1¾)		760-2 648 (700-2)

SC-4, 23 JAN 2025 to 20 FEB 2025

SC-4, 23 JAN 2025 to 20 FEB 2025