

WAAS CH 61103 W27A	APP CRS 270°	Rwy Idg TDZE Apt Elev	5998 92 112
----------------------------------------	------------------------	-----------------------------	----------------------------------------

RNAV (GPS) RWY 27

ESLER RGNL (E/SF')

RNP APCH-GPS.

⚠ Circling Rwy 14, 32 NA at night. Baro-VNAV and VDP NA when using Alexandria Intl altimeter setting. For uncompensated Baro-VNAV systems, LNAV/VNAV NA below -6°C or above 54°C. When local altimeter setting not received, use Alexandria Intl altimeter setting: increase LPV DA to 327 feet; increase LNAV/VNAV DA to 457 feet and all visibility $\frac{1}{8}$ SM; increase all MDAs 40 feet and LNAV visibility Cat C/D $\frac{1}{8}$ SM and Circling visibility Cat D $\frac{1}{4}$ SM. For inop MALSR increase LNAV/VNAV all Cats visibility to 1 mile and LNAV Cat C/D visibility to $1\frac{1}{8}$. For inop MALSR, when using Alexandria Intl altimeter setting, increase LNAV/VNAV all Cats visibility to 1 SM.

MALSR

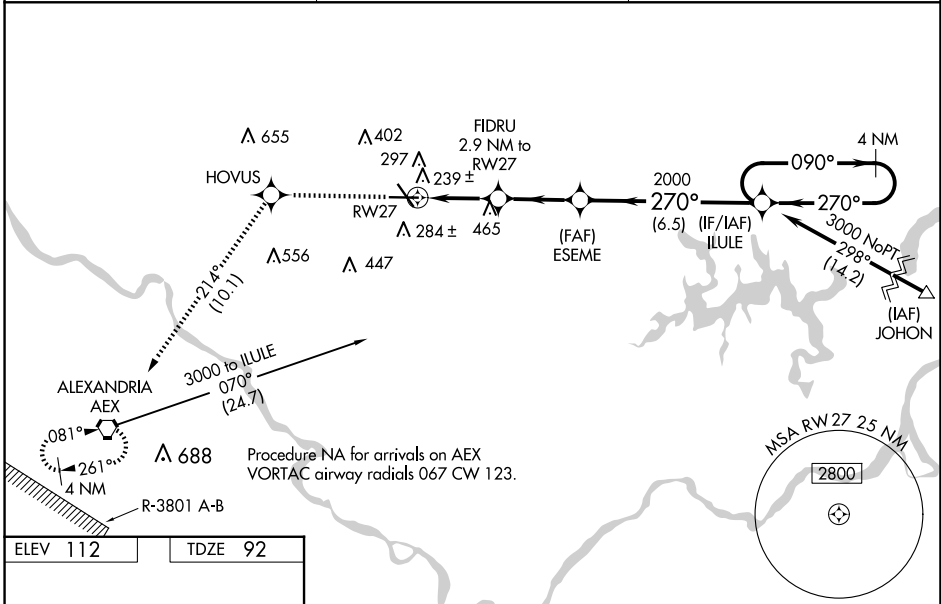


MISSED APPROACH:
Climb to 3000 direct HOVUS and on track 214° to AEX VORTAC and hold.

ESF ASOS
119.425

POLK APP CON
125.4 254.8

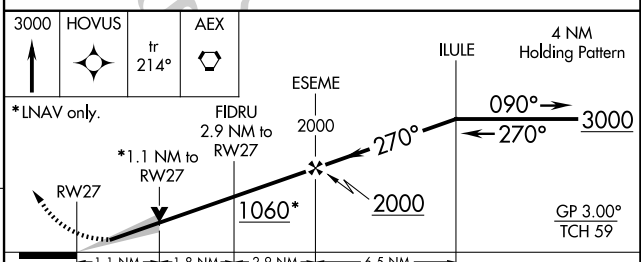
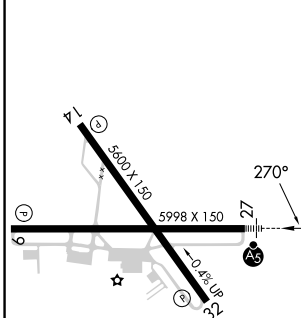
UNICOM
122.8 (CTAF) **①**



SC-4, 23 JAN 2025 to 20 FEB 2025

SC-4, 23 JAN 2025 to 20 FEB 2025

ELEV 112	TDZE 92
----------	---------



CATEGORY	A	B	C	D
LPV DA		292- $\frac{1}{2}$	200 (200- $\frac{1}{2}$)	
LNAV/VNAV DA		422- $\frac{1}{2}$	330 (400- $\frac{1}{2}$)	
LNAV MDA	500- $\frac{1}{2}$	408 (400- $\frac{1}{2}$)	500- $\frac{3}{4}$	408 (400- $\frac{3}{4}$)
CIRCLING	600-1	488 (500-1)	740- $1\frac{3}{4}$ 628 (700- $1\frac{3}{4}$)	760-2 648 (700-2)

REIL Rws 9, 14 and 32 **①**
MIRL Rwy 14-32 **①**
HIRL Rwy 9-27 **①**