

CONRA THREE DEPARTURE

SC-3, 23 JAN 2025 to 20 FEB 2025

TOP ALTITUDE:
3500

RADAR required.

DEPARTURE ROUTE DESCRIPTION

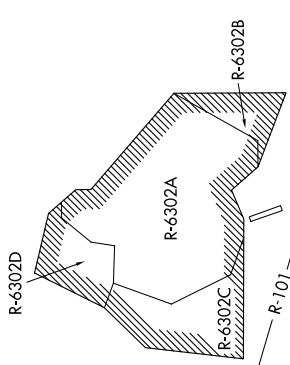
TAKEOFF RUNWAYS 16, 34: Climb on assigned heading for RADAR vectors to CONRA INT, maintain 3500. Thence (transition), expect filed altitude 10 minutes after departure.

COLLEGE STATION TRANSITION (CONRA3.CLL): From over CONRA INT on CLL R-287 to CLL VORTAC.

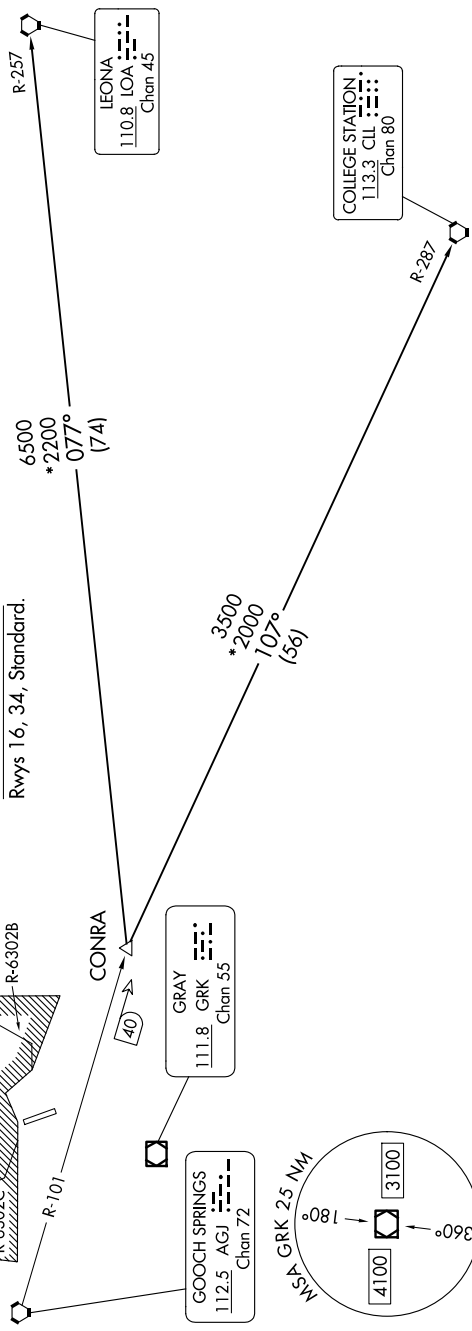
LEONA TRANSITION (CONRA3.LOA): From over CONRA INT on LOA R-257 to LOA VORTAC.

TOP ALTITUDE:
3500

CINC DEL 225.4
 GND CON 133.85 225.4
 HOOD TOWER* 119.65 269.45
 GRAY DEP CON 120.075 323.15



TAKE-OFF MINIMUMS
 Rwys 16, 34, Standard.

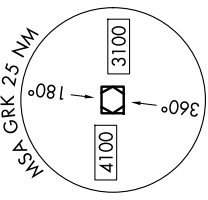


GRAY
 111.8 GRK
 Chan 55

GOOCH SPRINGS
 112.5 AGI
 Chan 72

LEONA
 110.8 LOA
 Chan 45

COLLEGE STATION
 113.3 CLL
 Chan 80



NOTE: Chart not to scale.

CONRA THREE DEPARTURE

SC-3, 23 JAN 2025 to 20 FEB 2025