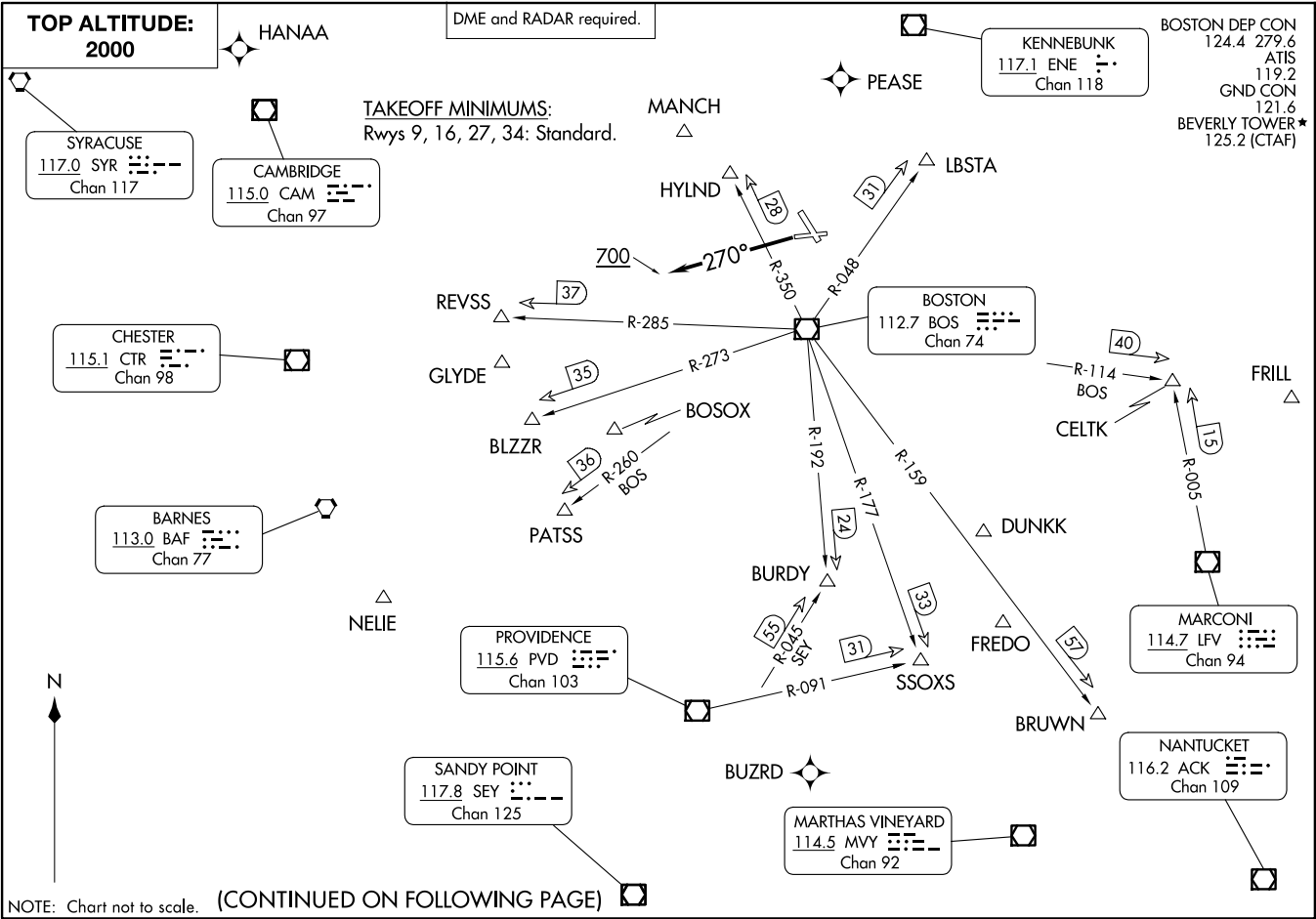


BEVERLY THREE DEPARTURE
(BVY3.BVM) 29DEC22

BEVERLY, MASSACHUSETTS
BEVERLY RNA1 (BVY1)



(CONTINUED ON FOLLOWING PAGE)

(BVY3.BVM) 24193
BEVERLY THREE DEPARTURE

AL-5039 (FAA)

BEVERLY RNA1 (BVY1)
BEVERLY, MASSACHUSETTS

BOSTON DEP CON
124.4 279.6
ATIS
119.2
GND CON
121.6
BEVERLY TOWER*
125.2 (CTAF)

KENNEBUNK
117.1 ENE
Chan 118

PEASE

DME and RADAR required.

TAKEOFF MINIMUMS:
Rwys 9, 16, 27, 34: Standard.

TOP ALTITUDE:
2000

HANAA

SYRACUSE
117.0 SYR
Chan 117

CAMBRIDGE
115.0 CAM
Chan 97

CHESTER
115.1 CTR
Chan 98

BARNES
113.0 BAF
Chan 77

PROVIDENCE
115.6 PVD
Chan 103

SANDY POINT
117.8 SEY
Chan 125

MARTHAS VINEYARD
114.5 MVY
Chan 92

MARCONI
114.7 LFV
Chan 94

NANTUCKET
116.2 ACK
Chan 109

BOSTON
112.7 BOS
Chan 74



DEPARTURE ROUTE DESCRIPTION

TAKEOFF RUNWAYS 9, 16, 34: Climb on assigned heading, thence . . .
TAKEOFF RUNWAY 27: Climb on heading 270° to 700, then as assigned
by ATC, thence . . .

. . . expect RADAR vectors to assigned route/navaid/fix. Maintain 2000.
Expect clearance to filed altitude/flight level within ten (10) minutes after
departure.

- NOTE: Non RNAV equipped aircraft can expect vectors on assigned route.
- NOTE: BLZZR departures expect vectors on BOS R-273, DME required.
- NOTE: BRUWN departures expect vectors on BOS R-159, DME required.
- NOTE: CELTK departures expect vectors on BOS R-114.
- NOTE: HYLND departures expect vectors on BOS R-350, DME required.
- NOTE: PATSS departures expect vectors on BOS R-260, DME required.
- NOTE: REVSS departures expect vectors on BOS R-285, DME required.
- NOTE: SSOXS departures expect vectors on BOS R-177.

NE-1, 23 JAN 2025 to 20 FEB 2025

NE-1, 23 JAN 2025 to 20 FEB 2025