

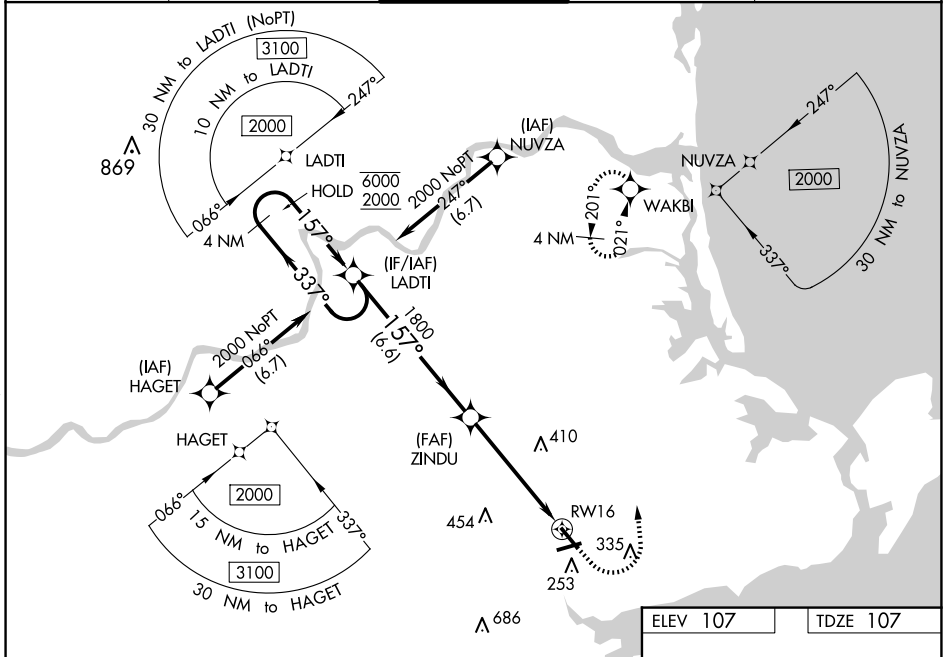
WAAS CH <b>93722</b> <b>W16A</b>	APP CRS <b>157°</b>	Rwy Idg TDZE Apt Elev	<b>4761</b> <b>107</b> <b>107</b>
--	------------------------	-----------------------------	---

# RNAV (GPS) RWY 16

BEVERLY RGNL (BVY)

RNP APCH-GPS.		MALS A3	MISSED APPROACH: Climb to 600 then climbing left turn to 2000 direct WAKBI and hold.
<p>⚠ Circling Rwy 9 NA at night. Rwy 16 helicopter visibility reduction below ¾ SM NA. Inop table does not apply. For uncompensated Baro-VNAV systems, LNAV/VNAV NA below -18° C or above 54° C.</p>			

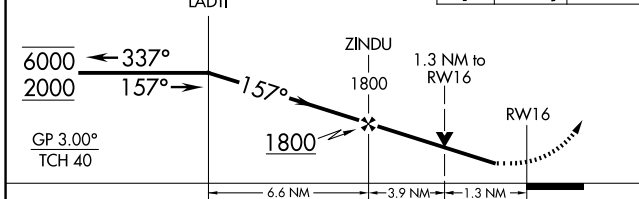
ATIS <b>119.2</b>	BOSTON APP CON <b>124.4 279.6</b>	BEVERLY TOWER★ <b>125.2 (CTAF) 0</b>	GND CON <b>121.6</b>	UNICOM <b>122.95</b>
----------------------	--------------------------------------	---	-------------------------	-------------------------



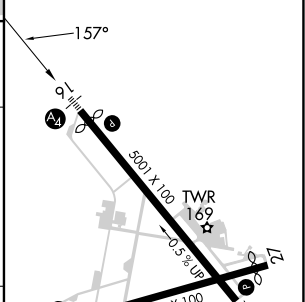
NE-1, 23 JAN 2025 to 20 FEB 2025

NE-1, 23 JAN 2025 to 20 FEB 2025

4 NM Holding Pattern	VGSI and RNAV glidepath not coincident (VGSI Angle 3.50/TCH 41).	600	2000	WAKBI
----------------------	--	-----	------	-------



ELEV 107	TDZE 107
----------	----------



CATEGORY	A	B	C	D
LPV DA		357-¾	250 (300-¾)	
LNAV/VNAV DA		422-7/8	315 (400-7/8)	
LNAV MDA	620-1	513 (600-1)	620-1¾	513 (600-1¾)
CIRCLING	620-1	513 (600-1)	820-2 713 (800-2)	820-2¼ 713 (800-2¼)

MIRL Rwys 9-27 and 16-34  
REL Rwy 34