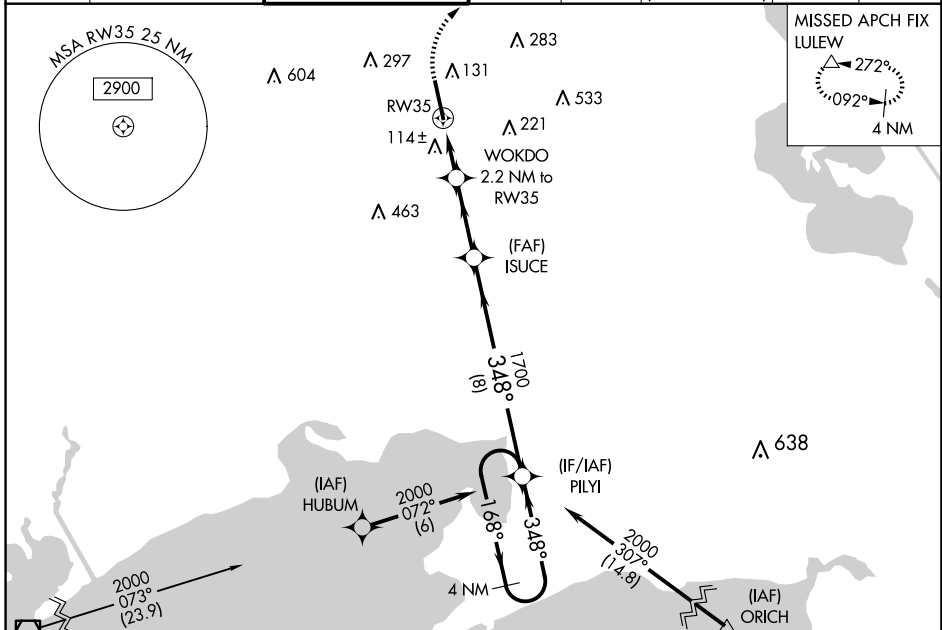


WAAS CH 40301 W35A	APP CRS 348°	Rwy Idg TDZE 21 Apt Elev 24
--	------------------------	---

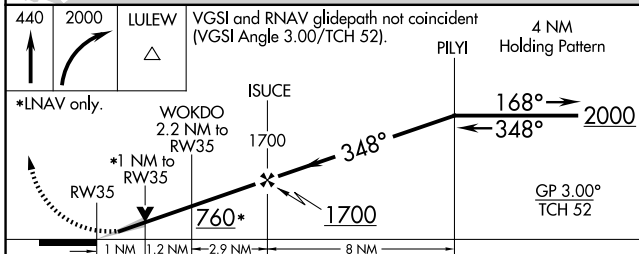
RNAV (GPS) RWY 35

ACADIANA RGNL (A.R.A)

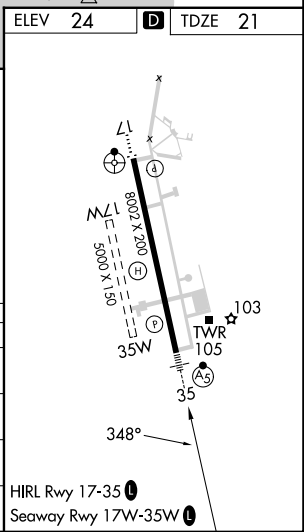
RNP APCH.				MALSR	MISSED APPROACH: Climb to 440 then climbing right turn to 2000 direct LULEW and hold.		
▼ For uncompensated Baro-VNAV systems, LNAV/VNAV NA below -3°C or above 54°C. For inop ALS, increase LNAV/VNAV all Cats visibility to ½ SM and LNAV Cats C/D visibility to 1 SM. Circling NA to Rwy 17W and 35W.							
ASOS 133.325	LAFAYETTE APP CON* 121.1 268.7	ACADIANA TOWER* 125.0 (CTAF) 239.3	GND CON 121.7	CLNC DEL 121.7	CLNC DEL 118.05 (when twr closed)	UNICOM 122.95	122.7



ELEV 24	TDZE 21
---------	---------



CATEGORY	A	B	C	D
LPV DA		221-½	200 (200-½)	
LNAV/DA		303-½	282 (300-½)	
LNAV MDA	380-½	359 (400-½)	380-¾	359 (400-¾)
CIRCLING	440-1 416 (500-1)	480-1 456 (500-1)	600-1½ 576 (600-½)	680-2 656 (700-2)



SC-4, 23 JAN 2025 to 20 FEB 2025

SC-4, 23 JAN 2025 to 20 FEB 2025