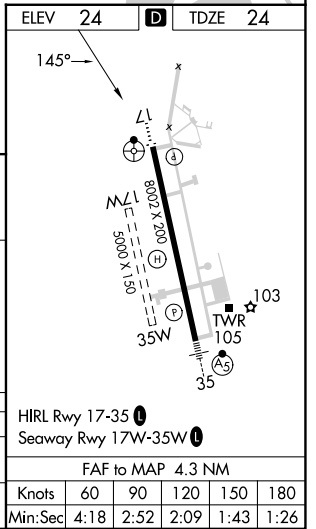
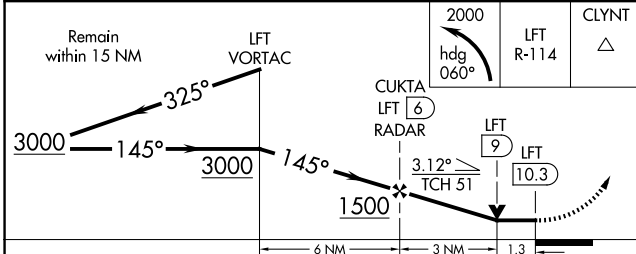
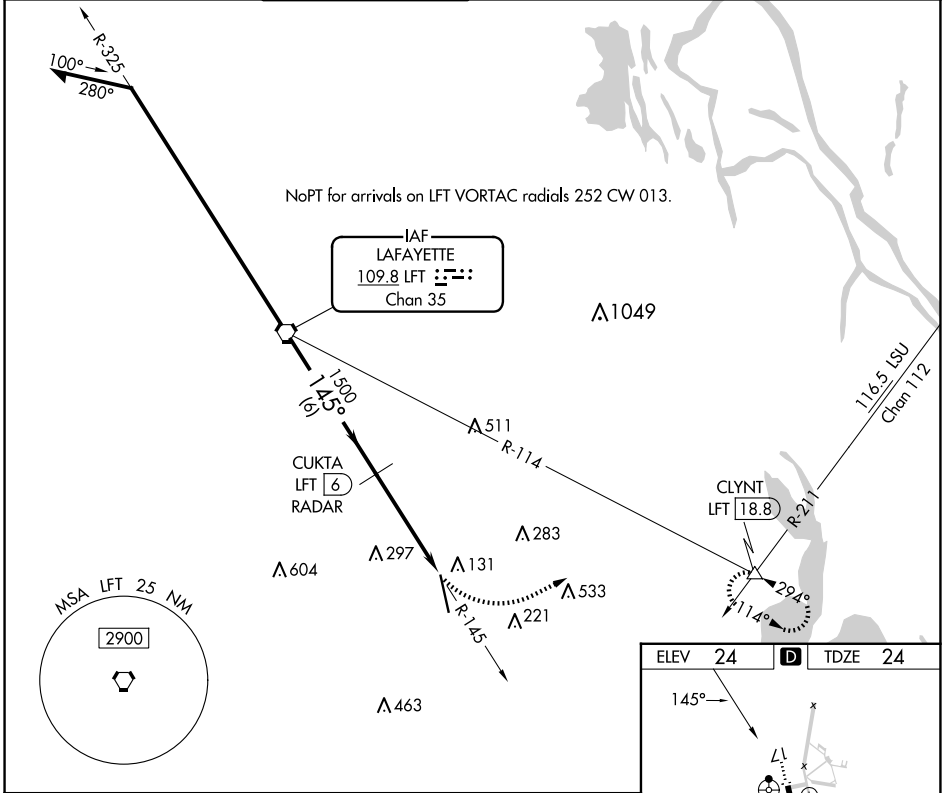


VORTAC LFT 109.8 Chan 35	APP CRS 145°	Rwy Idg TDZE 24 Apt Elev 24	8002
--	------------------------	---	-------------

VOR or TACAN RWY 17

ACADIANA RGNL (A.R.A.)

<p>▼ Circling NA to Rwy's 17W and 35W. ▲ DME or RADAR required. ▲ For inop ALS, increase S-17 Cat E visibility to 1½ mile.</p>		<p>ODALS ⬆️ ⋮</p>	<p>MISSED APPROACH: Climbing left turn to 2000 on heading 060° and LFT VORTAC R-114 to CLYNT INT/18.8 DME and hold.</p>				
ASOS 133.325	LAFAYETTE APP CON* 121.1 268.7	ACADIANA TOWER* 125.0 (CTAF) 0 239.3	GND CON 121.7	CLNC DEL 121.7	CLNC DEL 118.05 (when twr closed)	UNICOM 122.95	122.7 ①



SC-4, 23 JAN 2025 to 20 FEB 2025

SC-4, 23 JAN 2025 to 20 FEB 2025