

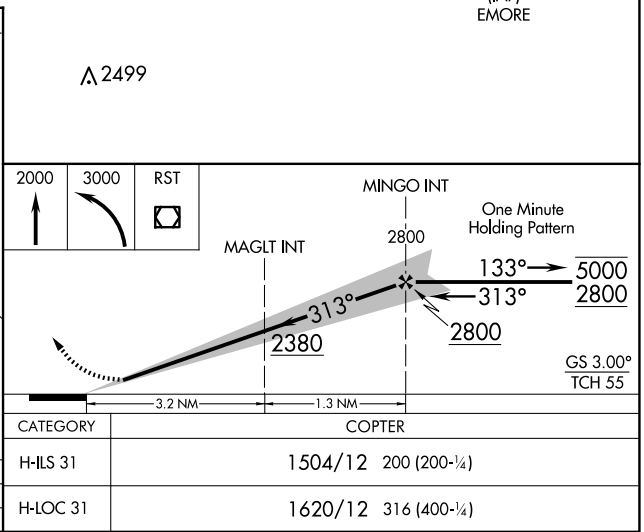
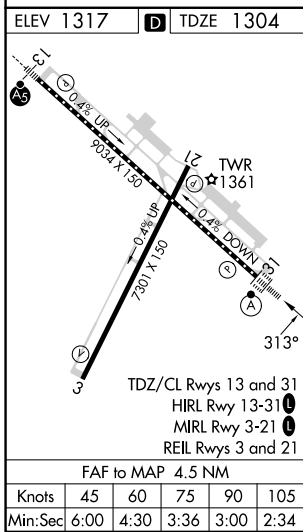
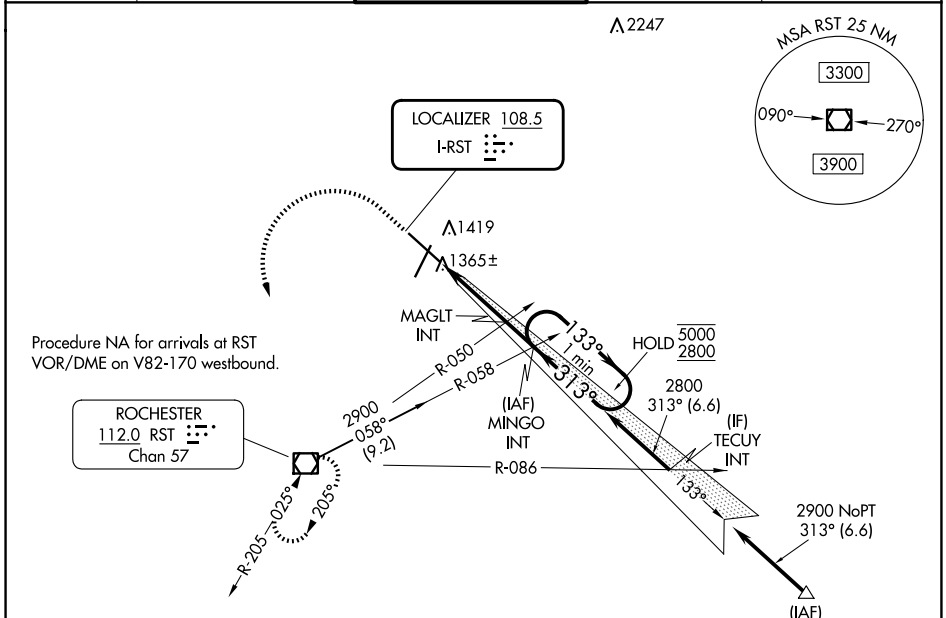
COPTER ILS Y or LOC Y RWY 31

ROCHESTER INTL (RST)

LOC I-RST 108.5	APP CRS 313°	Rwy Idg 9033
		TDZE 1304
		Apt Elev 1317

RADAR required for procedure entry at EMORE.		ALSIF-2	MISSED APPROACH: Climb to 2000 then climbing left turn to 3000 direct RST VOR/DME and hold.	
ASR	For inop ALS increase visibility to RVR 5000.			

ATIS 120.5	ROCHESTER APP CON* 119.8 251.125	ROCHESTER TOWER* 118.3 (CTAF) 257.8	GND CON 121.9	UNICOM 122.95
----------------------	--	---	-------------------------	-------------------------



COPTER ILS Y or LOC Y RWY 31

NC-1, 23 JAN 2025 to 20 FEB 2025

NC-1, 23 JAN 2025 to 20 FEB 2025