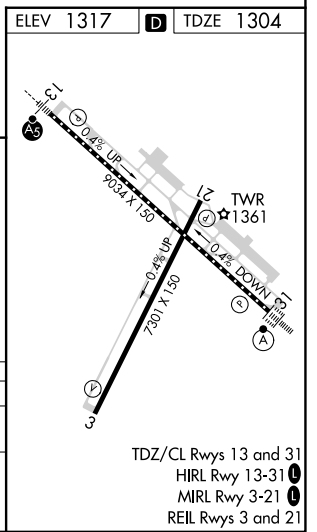
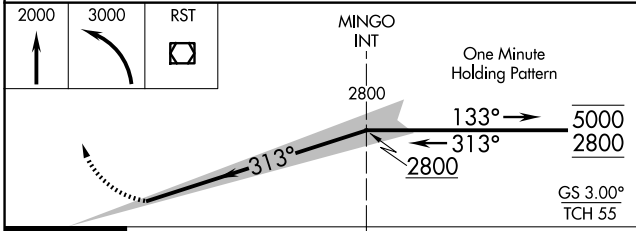
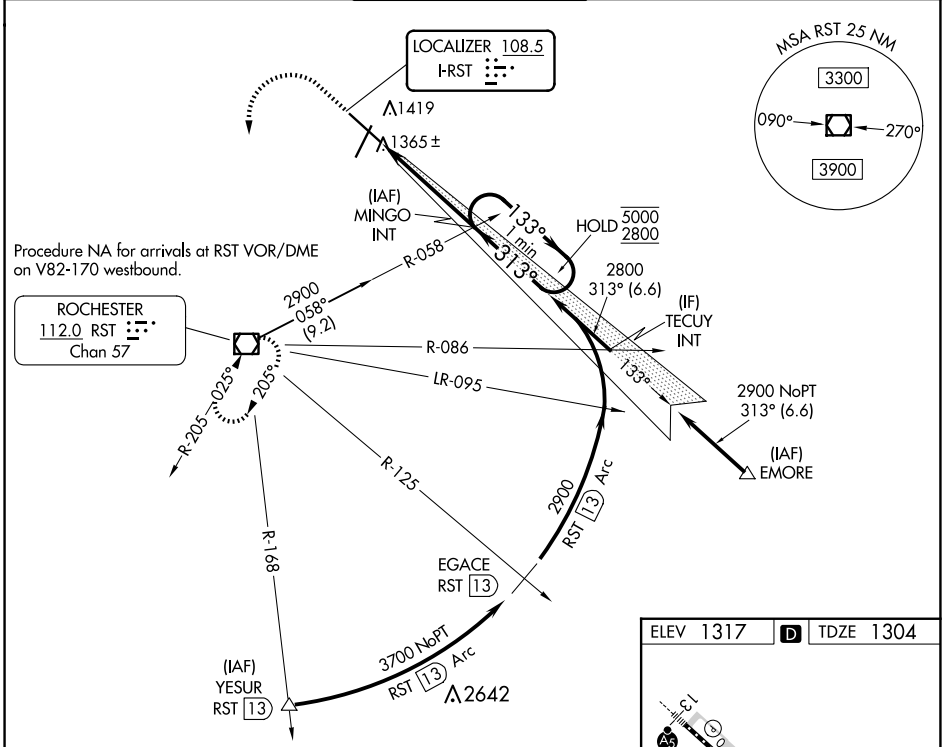


| | | | |
|---------------------------|------------------------|-----------------------------|---|
| LOC I-RST 108.5 | APP CRS 313° | Rwy Idg TDZE Apt Elev | 9033 1304 1317 |
|---------------------------|------------------------|-----------------------------|---|

ILS Z RWY 31 (CAT II)

ROCHESTER INTL (RST)

| | | | | |
|--|--|---|---|-------------------------|
| DME required for procedure entry at YESUR. | | ALSF-2 | MISSED APPROACH: Climb to 2000 then climbing left turn to 3000 direct RST VOR/DME and hold. | |
| ASR | Procedure NA when tower closed. | | | |
| ATIS 120.5 | ROCHESTER APP CON* 119.8 251.125 | ROCHESTER TOWER* 118.3 (CTAF) 257.8 | GND CON 121.9 | UNICOM 122.95 |



| | | | | |
|--|-----------------------|---|---|---|
| CATEGORY | A | B | C | D |
| S-ILS 31 | RA 104/12 100 DA 1404 | | | |
| CATEGORY II ILS - SPECIAL AIRCREW & AIRCRAFT CERTIFICATION REQUIRED | | | | |

NC-1, 23 JAN 2025 to 20 FEB 2025

NC-1, 23 JAN 2025 to 20 FEB 2025