

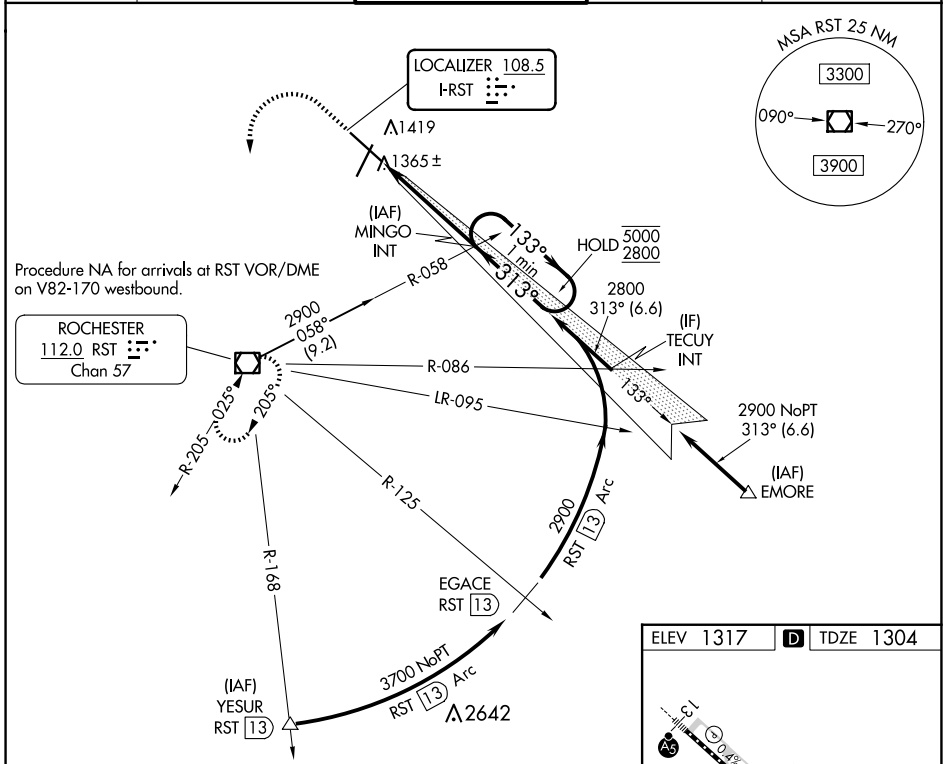
LOC I-RST 108.5	APP CRS 313°	Rwy Idg 9033
		TDZE 1304
		Apt Elev 1317

ILS Z RWY 31 (SA CAT I)

ROCHESTER INTL (RST)

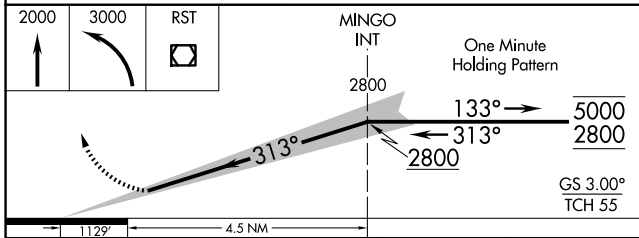
DME required for procedure entry at YESUR.		ALSIF-2	MISSED APPROACH: Climb to 2000 then climbing left turn to 3000 direct RST VOR/DME and hold.	
ASR Requires specific OPSPEC, MSPEC, or LOA approval and use of HUD to DH. Procedure NA when tower closed.				

ATIS 120.5	ROCHESTER APP CON* 119.8 251.125	ROCHESTER TOWER* 118.3 (CTAF) 257.8	GND CON 121.9	UNICOM 122.95
----------------------	--------------------------------------------	-----------------------------------------------	-------------------------	-------------------------



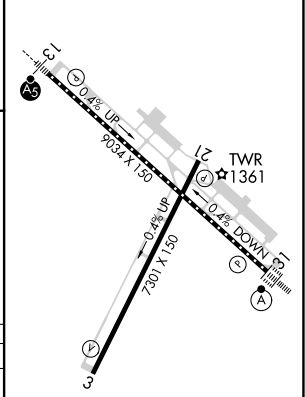
NC-1, 23 JAN 2025 to 20 FEB 2025

NC-1, 23 JAN 2025 to 20 FEB 2025



CATEGORY	A	B	C	D
S-ILS 31	RA 204/14 150 DA 1454			

ELEV 1317	D	TDZE 1304
-----------	----------	-----------



SA CATEGORY I ILS - SPECIAL AIRCREW & AIRCRAFT CERTIFICATION REQUIRED

TDZ/CL Rwy 13 and 31
HIRL Rwy 13-31
MIRL Rwy 3-21
REIL Rwy 3 and 21