

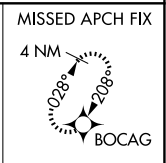
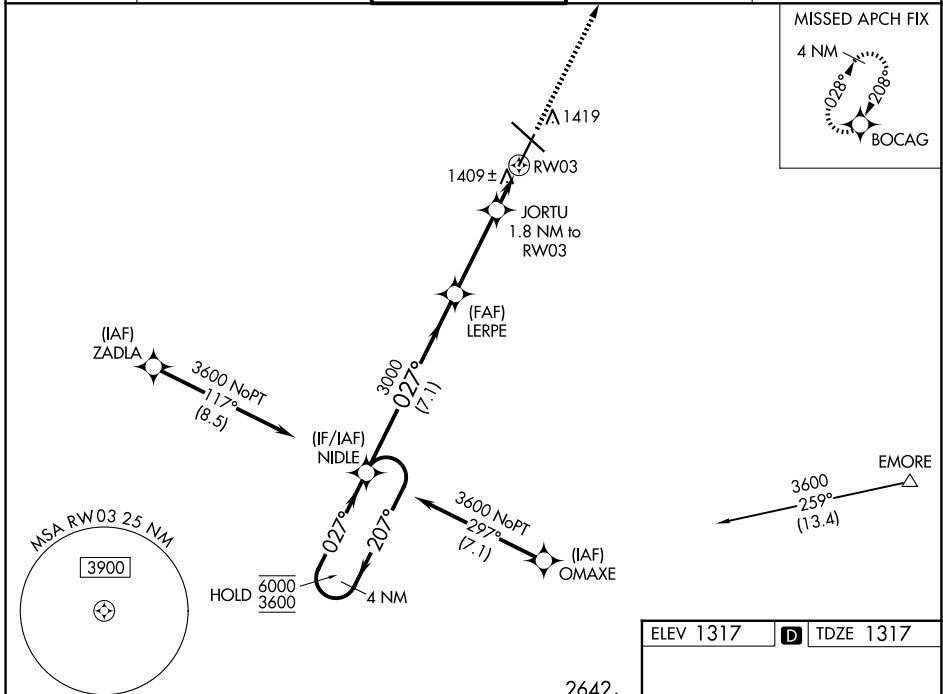
WAAS CH 69621 W03A	APP CRS 027°	Rwy Idg TDZE Apt Elev	7300 1317 1317
--	------------------------	-----------------------------	---

RNAV (GPS) RWY 3

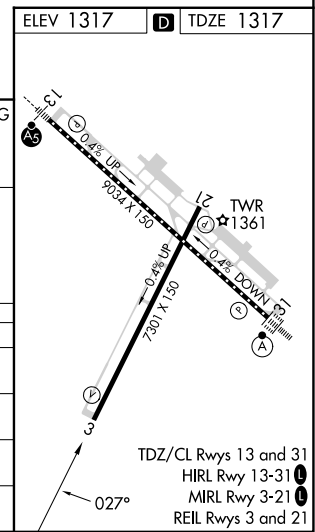
ROCHESTER INTL (RST)

RNP APCH - GPS.		MISSED APPROACH: Climb to 3400 direct BOCAG and hold, continue climb-in-hold to 4800.		
ASR	For uncompensated Baro-VNAV systems, LNAV/VNAV NA below -28°C or above 54°C.			

ATIS 120.5	ROCHESTER APP CON * 119.8 251.125	ROCHESTER TOWER * 118.3 (CTAF) 257.8	GND CON 121.9	UNICOM 122.95
----------------------	---	--	-------------------------	-------------------------



4 NM Holding Pattern		NIDLE	LERPE	JORTU 1.8 NM to RW03	3400 BOCAG
6000 ← 207°	3600 → 027°	027°	3000	0.9 NM to RW03	0.9 NM to RW03
GP 3.00°	TCH 47	7.1 NM	3.4 NM	0.9 NM	0.9 NM
CATEGORY	A	B	C	D	
LPV DA		1567-1	250 (300-1)		
LNAV/VNAV DA		1592-1	275 (300-1)		
LNAV MDA		1660-1	343 (400-1)		
CIRCLING	1720-1 403 (500-1)	1780-1 463 (500-1)	1900-1½ 583 (600-1½)	1900-2 583 (600-2)	



NC-1, 23 JAN 2025 to 20 FEB 2025

NC-1, 23 JAN 2025 to 20 FEB 2025