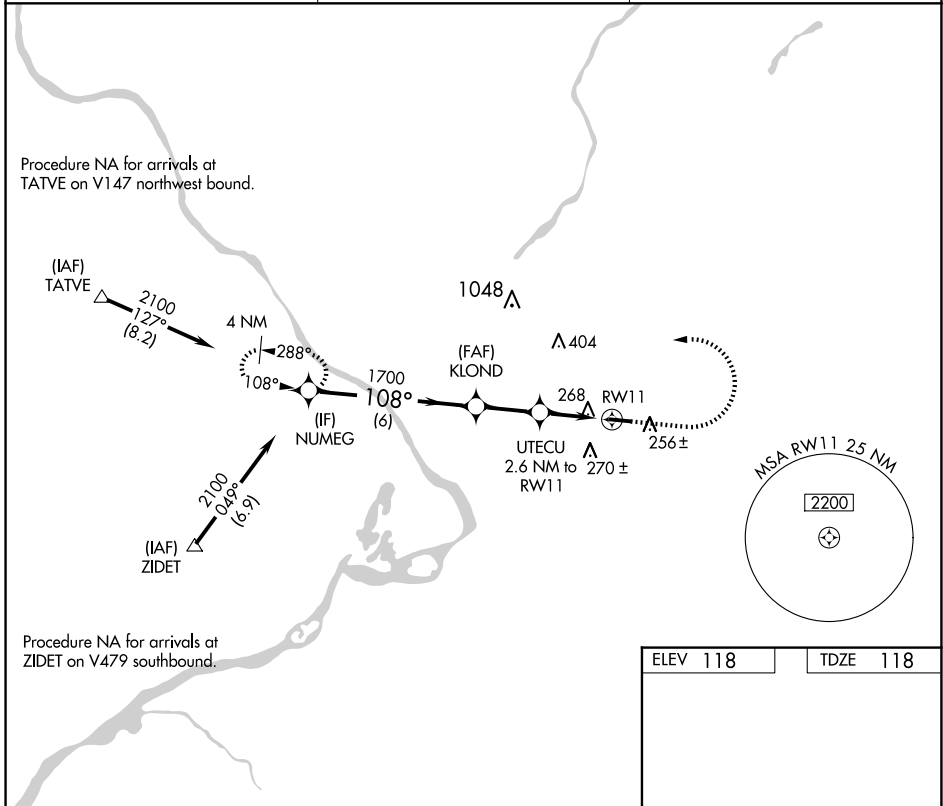


APP CRS	Rwy Idg	3877
108°	TDZE	118
	Apt Elev	118

RNAV (GPS) RWY 11

TRENTON-ROBBINSVILLE (N87)

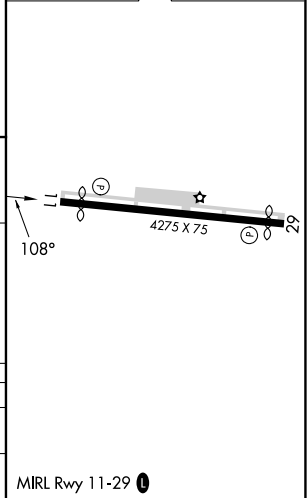
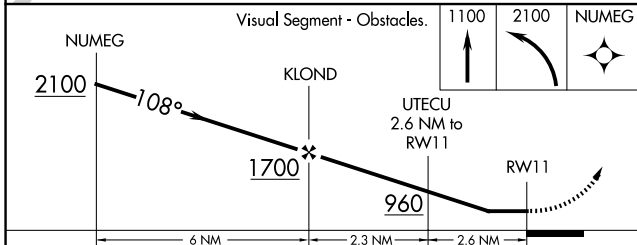
RNP APCH.		MISSED APPROACH: Climb to 1100, then climbing left turn to 2100 direct NUMEG and hold.
<p>▼ Procedure NA at night. Rwy 11 helicopter visibility reduction below 1 SM NA. Use Wrightstown altimeter setting.</p> <p>▲ NA</p>		
MC GUIRE APP CON	UNICOM	123.3 0
126.475 363.8	123.0 (CTAF)	



NE-2, 23 JAN 2025 to 20 FEB 2025

NE-2, 23 JAN 2025 to 20 FEB 2025

ELEV 118	TDZE 118
----------	----------



CATEGORY	A	B	C	D
LNNAV MDA	640-1	522 (600-1)	640-1 ⁵ / ₈	522 (600-1 ⁵ / ₈)
CIRCLING	680-1	562 (600-1)	680-1 ⁵ / ₈ 562 (600-1 ⁵ / ₈)	760-2 642 (700-2)