

VORTAC RBV <b>113.8</b> Chan <b>85</b>	APP CRS <b>288°</b>	Rwy Idg <b>3975</b> TDZE <b>118</b> Apt Elev <b>118</b>
--	------------------------	---

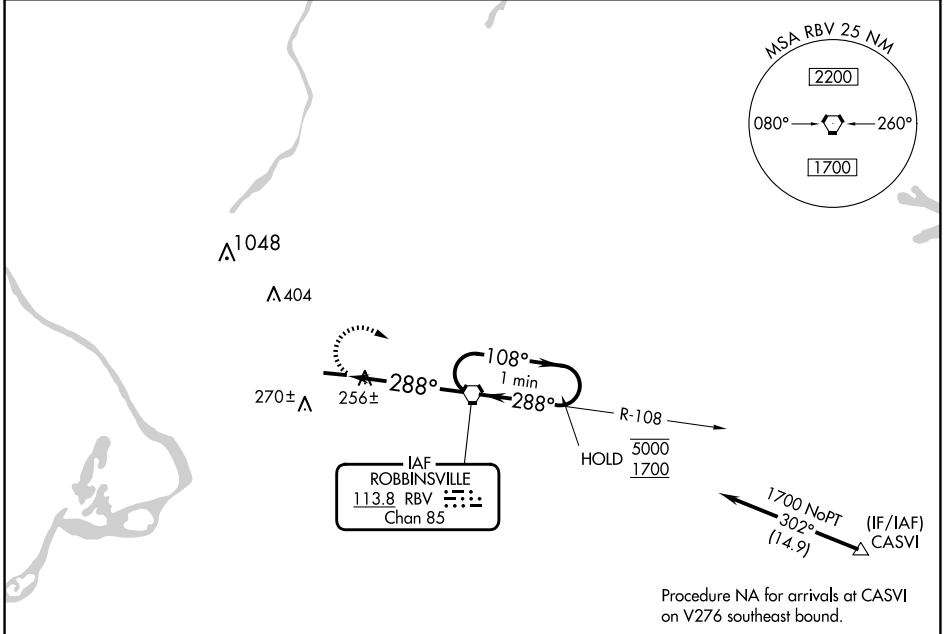
# VOR RWY 29

TRENTON-ROBBINSVILLE (N87)

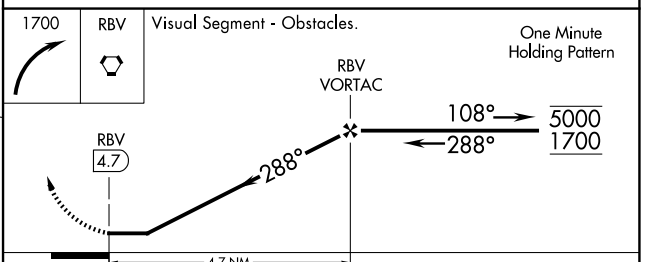
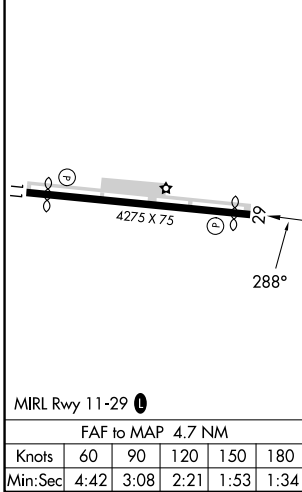
**Procedure NA at night.**  
**NA** Rwy 29 helicopter visibility reduction below 1 SM NA.  
 Use Wrightstown altimeter setting.

**MISSED APPROACH:** Climbing right turn to 1700 direct RBV VORTAC and hold.

MC GUIRE APP CON <b>126.475 363.8</b>	UNICOM <b>123.0</b> (CTAF)	<b>123.3</b> <b>0</b>
--	-------------------------------	-----------------------



ELEV <b>118</b>	TDZE <b>118</b>
-----------------	-----------------



CATEGORY	A	B	C	D
S-29	620-1	502 (600-1)	620-1 $\frac{3}{8}$	502 (600-1 $\frac{3}{8}$ )
CIRCLING	680-1	562 (600-1)	680-1 $\frac{1}{2}$ 562 (600-1 $\frac{1}{2}$ )	760-2 642 (700-2)

NE-2, 23 JAN 2025 to 20 FEB 2025

NE-2, 23 JAN 2025 to 20 FEB 2025