

VORTAC PXV 113.3 Chan 80	APP CRS 150°	Rwy Idg TDZE Apt Elev	N/A N/A 387
----------------------------------------------	------------------------	-----------------------------	----------------------------------------

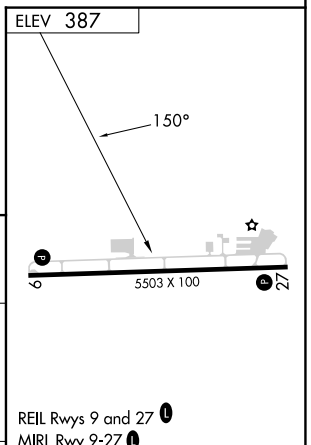
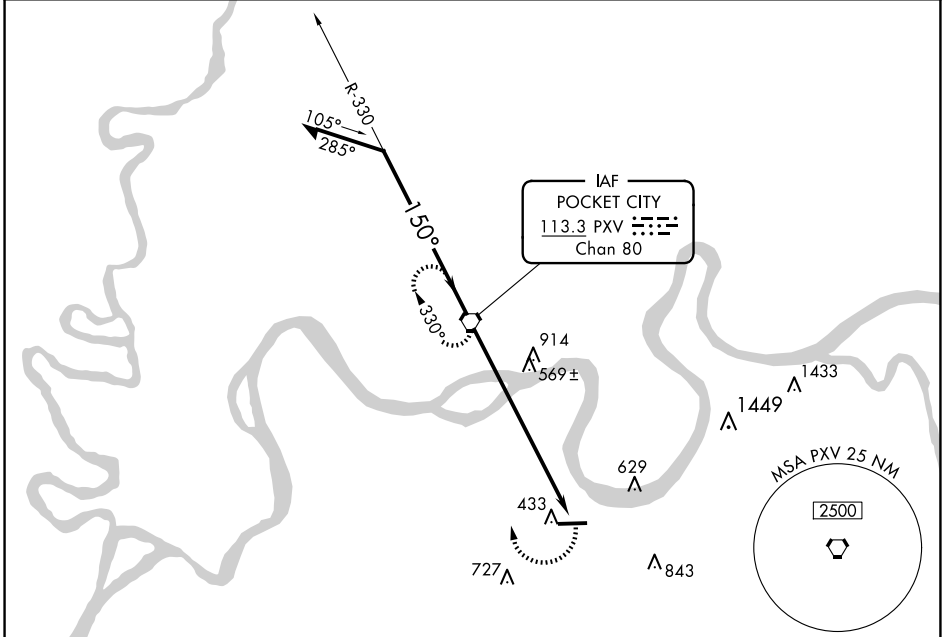
VOR-A

HENDERSON CITY-COUNTY (EHR)

NA When local altimeter setting not received, use Evansville altimeter setting and increase all MDAs 80 feet, and increase Circling Cats C/D visibility ¼ SM.

MISSED APPROACH: Climbing right turn to 2100 direct PXV VORTAC and hold.

AWOS-3PT 118.85	EVANSVILLE APP CON ★ 124.025 257.8	UNICOM 122.8 (CTAF) 0
---------------------------	----------------------------------------------	----------------------------------------



CATEGORY	A	B	C	D	FAF to MAP 7.9 NM					
	920-1 533 (600-1)		1040-1¾ 653 (700-1¾)	1200-2¾ 813 (900-2¾)	Knots	60	90	120	150	180
CIRCLING	920-1 533 (600-1)		1040-1¾ 653 (700-1¾)	1200-2¾ 813 (900-2¾)	Min:Seq	7:54	5:16	3:57	3:10	2:38

SE-1, 23 JAN 2025 to 20 FEB 2025

SE-1, 23 JAN 2025 to 20 FEB 2025