

LOC/DME I-AVL <b>110.5</b> Chan 42	APP CRS <b>347°</b>	Rwy Idg TDZE <b>8002</b> <b>2141</b> Apt Elev <b>2164</b>
--	------------------------	---

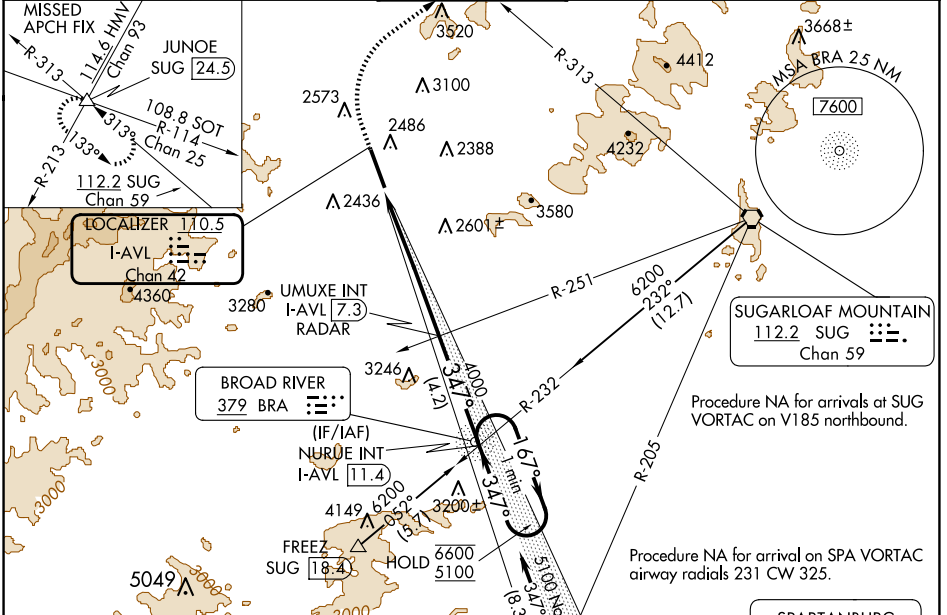
# ILS or LOC RWY 35

ASHEVILLE RGNL (AVL)

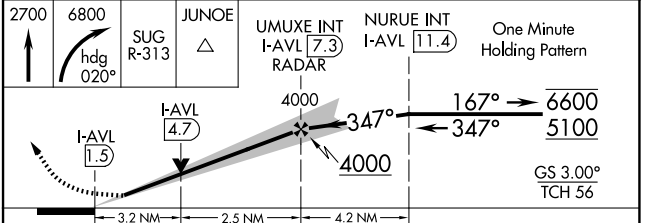
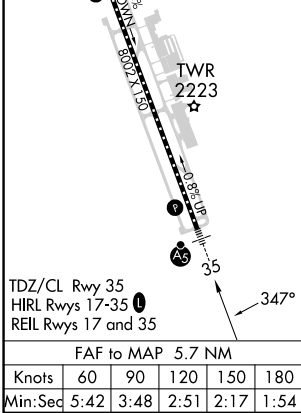
**MALSRS** MISSED APPROACH: Climb to 2700 then climbing right turn to 6800 on heading 020° and on SUG VORTAC R-313 to JUNOE INT/SUG 24.5 DME and hold, continue climb-in-hold to 6800.  
\* Missed approach requires minimum climb of 340 feet per NM to 4200.

**CAUTION** Circling NA west of Rwy 17-35.

ATIS <b>120.2</b>	ASHEVILLE APP CON* <b>124.65 351.8</b>	ASHEVILLE TOWER* <b>121.1 (CTAF) 0 257.8</b>	GND CON <b>121.9</b>	UNICOM <b>122.95</b>
----------------------	---	---	-------------------------	-------------------------



ELEV 2164	<b>D</b>	TDZE 2141
-----------	----------	-----------



CATEGORY	A	B	C	D
S-ILS 35*	2360/24		219 (200-1/2)	
S-ILS 35	3019-4		878 (900-4)	
S-LOC 35	3200/40 1059 (1100-3/4)	3200/55 1059 (1100-1)	3200-2 1/2	1059 (1100-2 1/2)
<b>C</b> CIRCLING	3200-1 1/4 1036 (1100-1 1/4)	3200-1 1/2 1036 (1100-1 1/2)	3460-3 1296 (1300-3)	3720-3 1556 (1600-3)

SE-2, 23 JAN 2025 to 20 FEB 2025

SE-2, 23 JAN 2025 to 20 FEB 2025