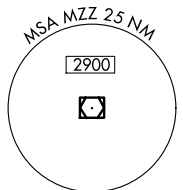
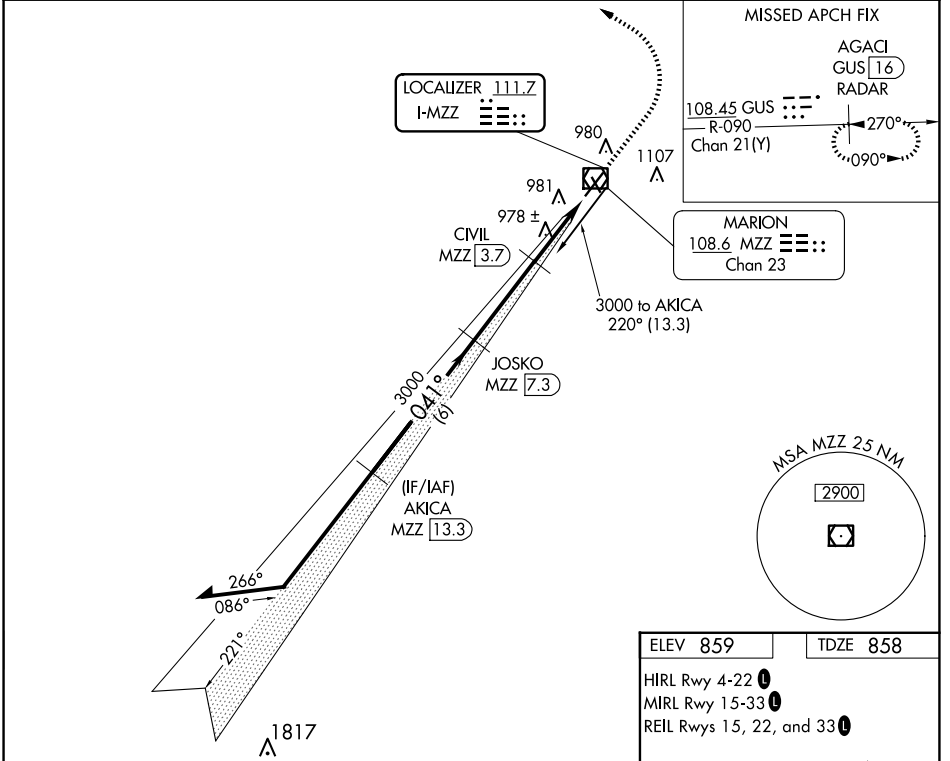


ILS or LOC RWY 4

MARION MUNI - MCKINNEY FLD (MZZ)

LOC I-MZZ 111.7	APP CRS 041°	Rwy Idg TDZE Apt Elev	6011 858 859
---------------------------	------------------------	-----------------------------	---

DME required. ▼ DME from MZZ VOR/DME. Simultaneous reception of I-MZZ and MZZ DME required. For inop ALS, increase S-LOC 4 Cats C and D visibility to 1½ SM. Circling Rwy 15 NA at night. ▲ NA		MALSR 	MISSED APPROACH: Climb to 2500 then climbing left turn to 4000 on heading 320° to intercept GUS VORTAC R-090 to AGACI/GUS VORTAC 16 DME/RADAR and hold.
AWOS-3 108.6	GRISSOM APP CON ★ 121.05 338.275	CLNC DEL 120.0	UNICOM 122.7 (CTAF) 0



ELEV 859	TDZE 858
HIRL Rwy 4-22 1	
MIRL Rwy 15-33 1	
REIL Rwy 15, 22, and 33 1	

FAF to MAP 6.6 NM					
Knots	60	90	120	150	180
Min:Sec	6:34	4:22	3:17	2:37	2:11

Remain within 10 NM	AKICA MZZ 13.3	JOSKO MZZ 7.3	CIVIL MZZ 3.7	MZZ 1.8	MZZ 0.7
	3000	3000	3000	1860	
GS 3.00° TCH 52	041°	041°	041°	041°	
	6 NM	3.6 NM	1.9 NM	1.1 NM	
CATEGORY	A	B	C	D	
S-ILS 4	1058-½		200 (200-½)		
S-LOC 4	1260-½	402 (500-½)	1260-¾	402 (500-¾)	
CIRCLING	1300-1 441 (500-1)	1320-1 461 (500-1)	1420-1½ 561 (600-1½)	1500-2 641 (700-2)	

ILS or LOC RWY 4

EC-2, 23 JAN 2025 to 20 FEB 2025

EC-2, 23 JAN 2025 to 20 FEB 2025