

# RNAV (GPS) RWY 12

APCH CRS **122°**  
 Rwy ldg **10,000'**  
 TDZE **4344'**  
 Arprt Elev **4351'**

[USA]

MICHAEL AAF (KDPG)

**▽** \* Obtain local altimeter setting on CTAF; when not received, use Wendover altimeter setting.  
**△** NA

**MISSED APPROACH:** Climb to 4760 then climbing right turn to 8500 direct ETUBY and hold, continue climb in hold to 8500.

CLOVER CON  
**134.1 363.5**

CTAF  
**126.2 270.3**

Procedure lies within R-6402A, PPR.

Knots	60	120	180	240	300	360
V/V(fpm)	337	674	1011	1348	1685	2022
Min climb of 337 ft/NM to 6000 - Controlling Obstacle Unk						

(IAF)  
 BONNEVILLE  
 BVL

CEVAR

6894

R-6405

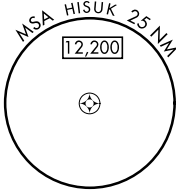
Procedure NA for arrivals on DTA VORTAC  
 airways radials R-348 CW R-008.

R-6406A

R-6406B

R-6402B

R-6407



R-6402A

VGSI and descent angles  
 not coincident

VDP NA with Wendover  
 altimeter setting minimums.

4760

8500

ETUBY

ETUBY

UWOZO

HISUK

8500

302°

122°

3.00°

TCH 55

122°

302°

6100

122°

302°

4.6 NM

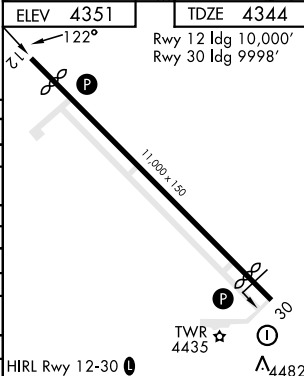
0.8

ELEV 4351

TDZE 4344

Rwy 12 ldg 10,000'  
 Rwy 30 ldg 9998'

CATEGORY	A	B	C	D	E
LNAV MDA	4640-1 294 (300-1)		5140-2½ 794 (800-2½)		
<b>C</b> CIRCLING	4800-1 449 (500-1)	4920-1 569 (600-1)	5160-2½ 809 (900-2½)	5880-3 1529 (1600-3)	NA
BELOW MINIMA REQUIRES MISSED APPROACH CLIMB GRADIENT OF 337 ft/NM					
LNAV MDA	NA		4640-1 294 (300-1)		
* WENDOVER ALTIMETER SETTING MINIMUMS					
LNAV MDA	4800-1 454 (500-1)		5300-3 954 (1000-3)		
<b>C</b> CIRCLING	4960-1 609 (700-1)	5080-1 729 (800-1)	5320-3 969 (1000-3)	6040-3 1689 (1700-3)	NA
BELOW MINIMA REQUIRES MISSED APPROACH CLIMB GRADIENT OF 337 ft/NM					
LNAV MDA	NA		4800-3 454 (500-3)		



# RNAV (GPS) RWY 12

SW-4, 23 JAN 2025 to 20 FEB 2025

SW-4, 23 JAN 2025 to 20 FEB 2025