

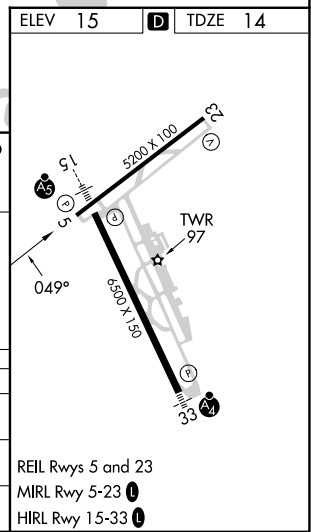
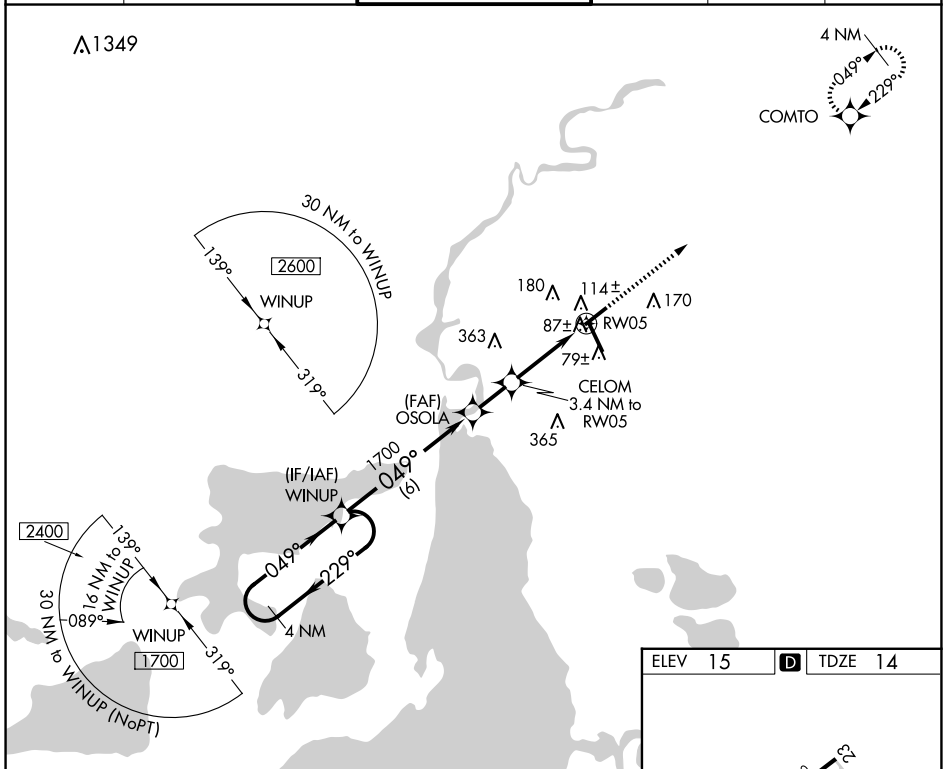
WAAS CH 69440 W05A	APP CRS 049°	Rwy Idg TDZE Apt Elev	5200 14 15
--	------------------------	-----------------------------	---------------------------------------

RNAV (GPS) RWY 5

LAKE CHARLES RGNL (LCH)

▽ Rwy 5 helicopter visibility reduction below ¼ SM NA. ASR DME/DME RNP-0.3 NA.	MISSED APPROACH: Climb to 1900 direct COMTO and hold.
--	---

ATIS 118.75	LAKE CHARLES APP CON * 119.35 353.75	LAKE CHARLES TOWER * 120.7 (CTAF) 0 257.8	GND CON 121.8	CLNC DEL 126.25	UNICOM 122.95
-----------------------	--	--	-------------------------	---------------------------	-------------------------



4 NM Holding Pattern	WINUP	OSOLA	1900	COMTO
1700 ← 229°	← 049°	← 1700	↑	✧
		CELOM 3.4 NM to RW05	0.9 NM to RW05	
		1140		
		3.00° TCH 49		
	6 NM	1.8 NM	2.5 NM	0.9
CATEGORY	A	B	C	D
LP MDA	340-1 326 (400-1)			
LNAV MDA	380-1 366 (400-1)			
C CIRCLING	440-1 425 (500-1)	480-1 465 (500-1)	580-1½ 565 (600-1½)	680-2 665 (700-2)

REIL Rwy 5 and 23
MIRL Rwy 5-23 **①**
HIRL Rwy 15-33 **②**

SC-4, 23 JAN 2025 to 20 FEB 2025

SC-4, 23 JAN 2025 to 20 FEB 2025