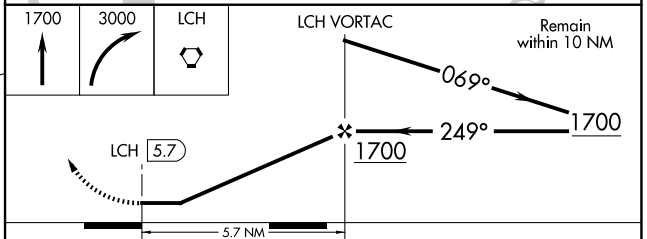
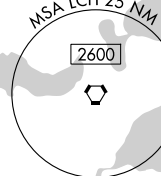
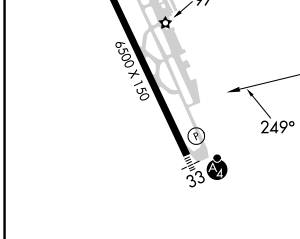
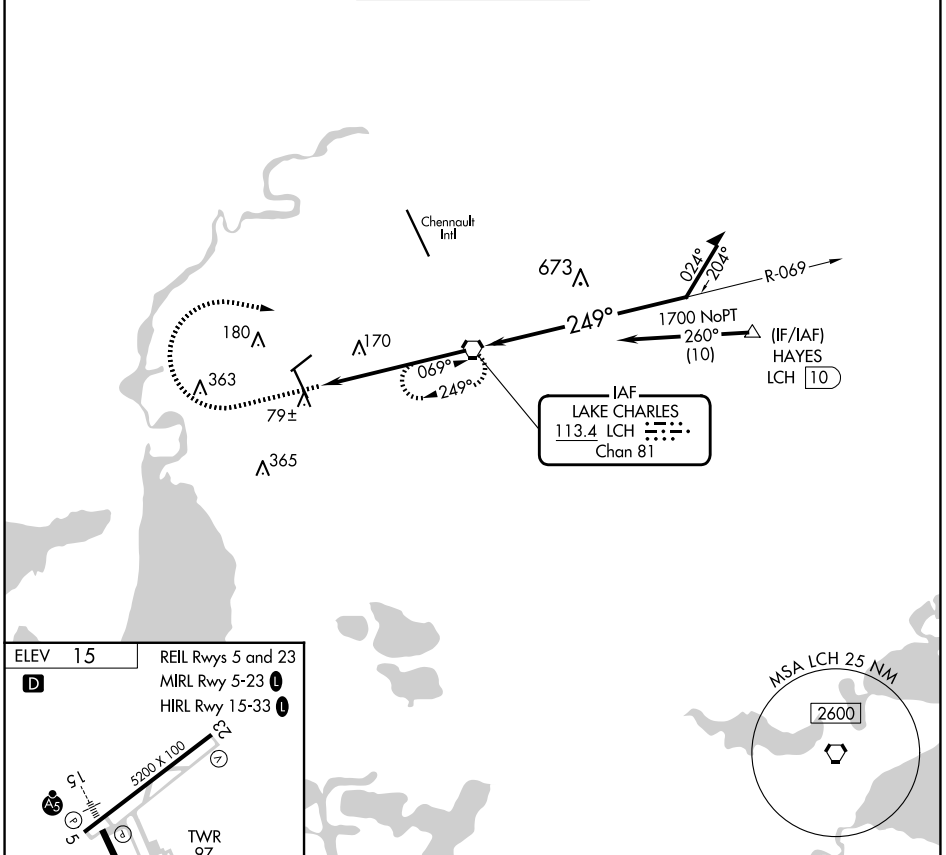


VORTAC LCH 113.4 Chan 81	APP CRS 249°	Rwy Idg TDZE Apt Elev	N/A N/A 15
---------------------------------------	------------------------	-----------------------------	---------------------------------------

VOR-A
LAKE CHARLES RGNL (LCH)

ASR	MISSED APPROACH: Climb to 1700 then climbing right turn to 3000 direct LCH VORTAC and hold, continue climb-in-hold 3000.				
-----	--	--	--	--	--

ATIS 118.75	LAKE CHARLES APP CON* 119.35 353.75	LAKE CHARLES TOWER* 120.7 (CTAF) 257.8	GND CON 121.8	CLNC DEL 126.25	UNICOM 122.95
-----------------------	---	---	-------------------------	---------------------------	-------------------------



FAF to MAP 5.7 NM					
Knots	60	90	120	150	180
Min:Sec	5:42	3:48	2:51	2:17	1:54
CIRCLING	460-1 445 (500-1)	480-1 465 (500-1)	580-1½ 565 (600-1½)	680-2 665 (700-2)	

SC-4, 23 JAN 2025 to 20 FEB 2025

SC-4, 23 JAN 2025 to 20 FEB 2025