

DUBLIN, VIRGINIA

AL-5084 (FAA)

23166

LOC I-PSK 110.9	APP CRS 058°	Rwy Idg TDZE Apt Elev	6201 2105 2105
---------------------------	------------------------	-----------------------------	---

ILS or LOC Y RWY 6

NEW RIVER VALLEY (PSK)

DME required.



MISSED APPROACH: Climb to 3000 then climbing right turn to 5000 direct PSK VORTAC and hold, continue climb-in-hold to 5000.

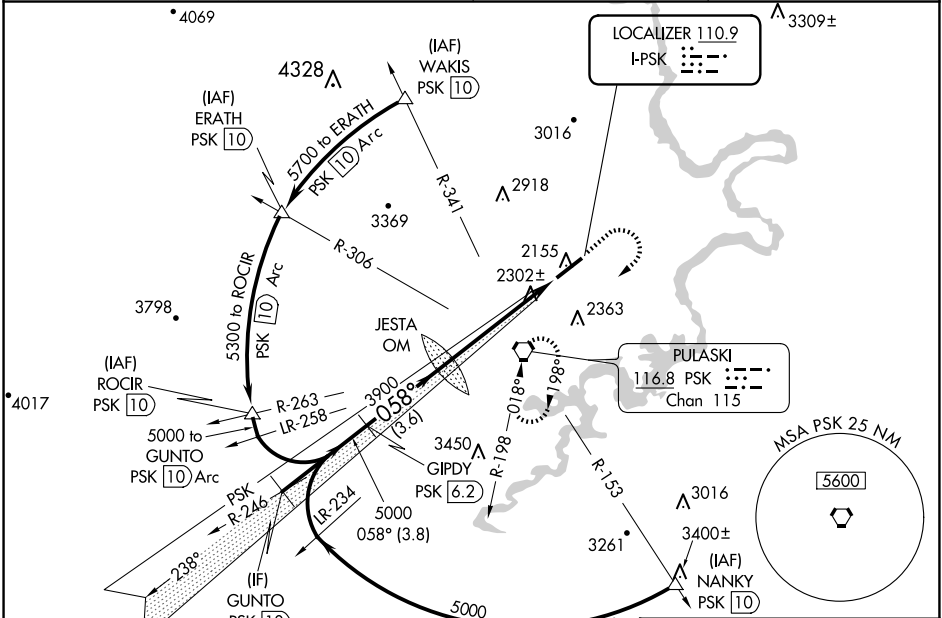
NA Circling NA for Cat D northwest of Rwy 6-24. Inop table does not apply to S-ILS 6 all Cats and S-LOC 6 Cats A and B. For inop ALS, increase S-LOC 6 Cat C/D visibility to 1 3/8 SM.

AWOS-3
127.375

ROANOKE APP CON
126.0 339.8

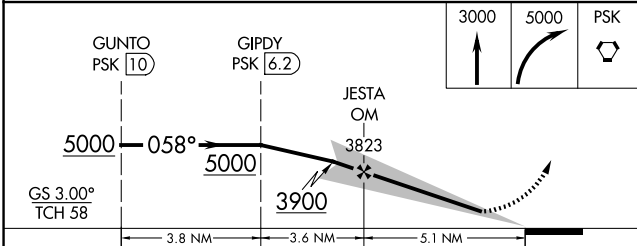
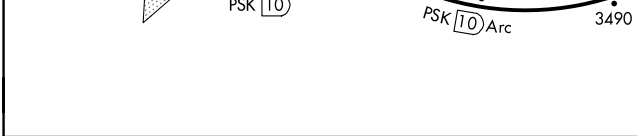
ROANOKE CLNC DEL
121.7

UNICOM
122.7 (CTAF)

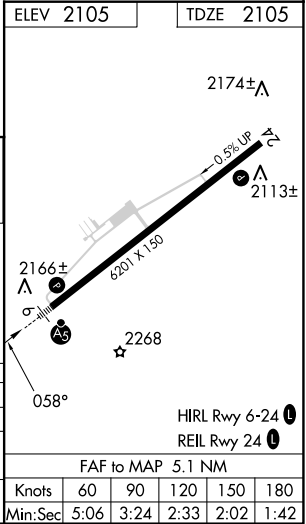


NE-3, 23 JAN 2025 to 20 FEB 2025

NE-3, 23 JAN 2025 to 20 FEB 2025



CATEGORY	A	B	C	D
S-ILS 6	2305-1		200 (200-1)	
S-LOC 6	2560-1		455 (500-1)	
C CIRCLING	2620-1 515 (600-1)	2680-1 575 (600-1)	2780-2 675 (700-2)	2780-2 1/4 675 (700-2 1/4)



DUBLIN, VIRGINIA

37°08'N-80°41'W

NEW RIVER VALLEY (PSK)

Orig-B 25FEB21

ILS or LOC Y RWY 6