


VOR TBN 110.0	APP CRS 138°	Rwy Idg 5535
		TDZE 1158
		Apt Elev 1160

VOR RWY 15

WAYNESVILLE-ST ROBERT RGNL FORNEY FLD (TBN)

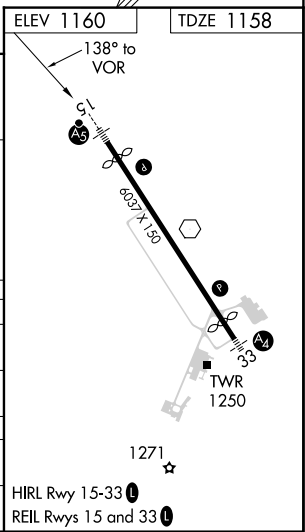
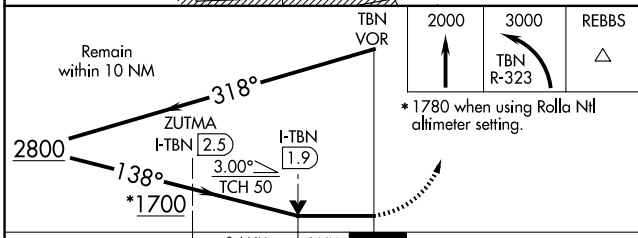
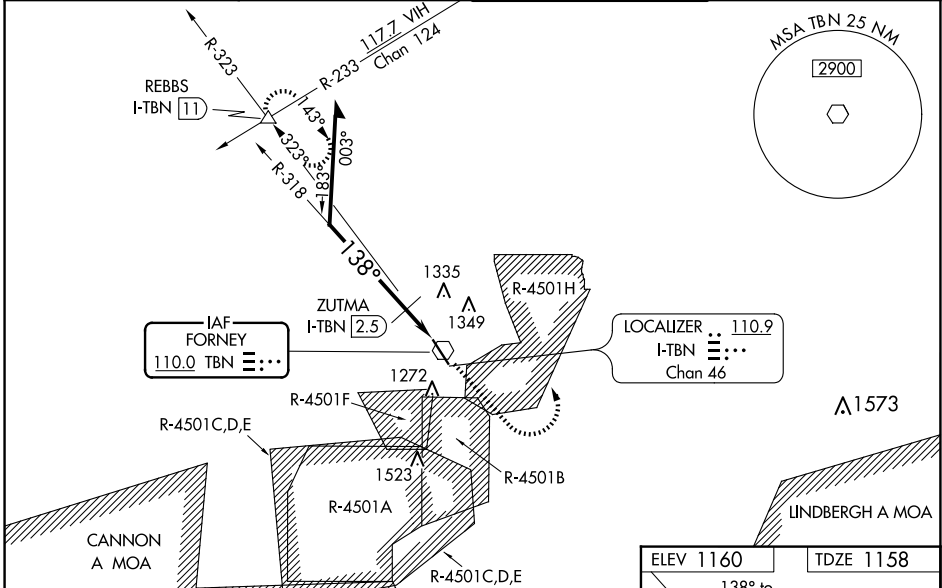
⚠ Procedure NA when R-4501B or R-4501H in use. Inop table does not apply to S-15 Cat A and B or to ZUTMA fix minimums. Circling NA west of Rwy 15-33. When local altimeter setting not received, use Rolla Nil altimeter setting and increase all MDAs 80 feet and increase S-15 visibility Cats C/D 1/4 SM and Circling Cat C visibility 1/8 SM. Inop table does not apply to Cats A/B when using Rolla Nil altimeter setting. For inop ALS when using Rolla Nil altimeter setting increase S-15 Cats C/D visibility to 1 3/4 SM. For ALS when using Rolla Nil altimeter setting increase S-15 ZUTMA fix minimums Cats C/D visibility to 1 3/8 SM. #DME from I-TBN LOC/DME.

MALSR



MISSED APPROACH: Climb to 2000 then climbing left turn to 3000 on TBN VOR R-323 to REBBS INT/I-TBN LOC/DME 11 DME and hold.

D-ATIS 118.7 229.4	KANSAS CITY CENTER 128.35 284.675	FORNEY TOWER ★ 125.4 (CTAF) 0 268.7	GND CON 123.75 256.8
------------------------------	---	---	--------------------------------



CATEGORY	A	B	C	D
S-15	1700-1	542 (600-1)	1700-1 1/8	542 (600-1 1/8)
C CIRCLING	1700-1	540 (600-1)	1700-1 5/8	1720-2
ZUTMA FIX MINIMUMS #				
S-15	1520-1		362 (400-1)	
C CIRCLING	1580-1	1660-1	1660-1 1/2	1720-2
	420 (500-1)	500 (500-1)	500 (500-1 1/2)	560 (600-2)

VOR RWY 15

NC-3, 23 JAN 2025 to 20 FEB 2025

NC-3, 23 JAN 2025 to 20 FEB 2025