

FORT JOHNSON, LOUISIANA

# RNAV (GPS) RWY 16

APCH CRS	Rwy ldg	3913
158°	TDZE	328
	Arpt Elev	330

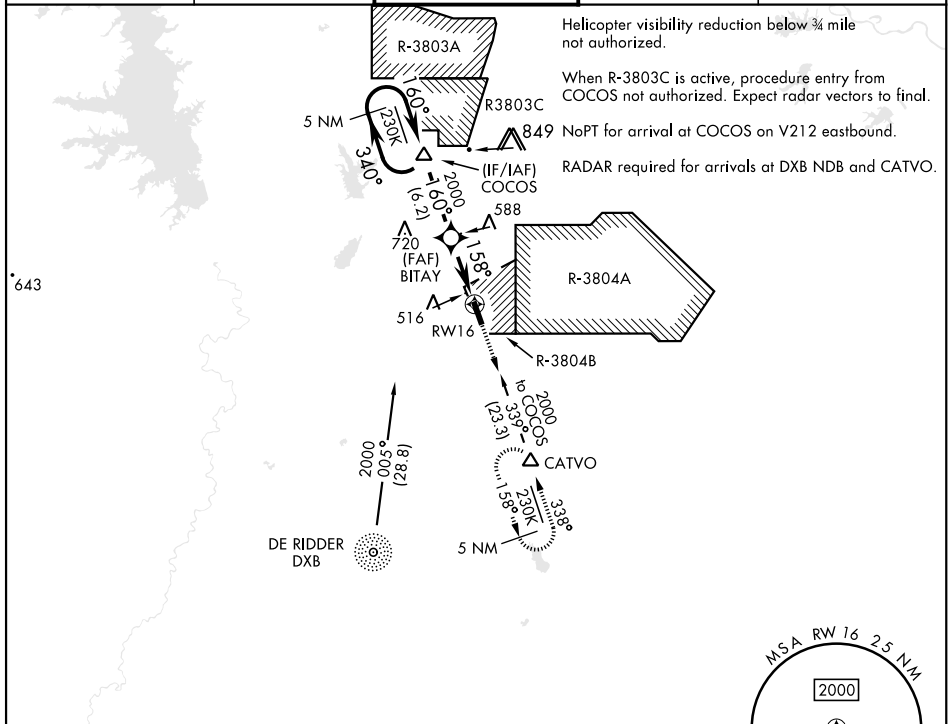
[USA]

MAKS AAF (KPOE)

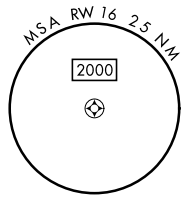
RNP APCH - GPS

MISSED APPROACH: Climb to 2000 direct CATVO and hold.

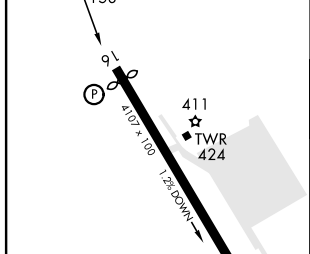
ATIS <b>134.85 282.2</b>	APP CON <b>123.7 261.3</b>	TOWER★ <b>119.0 (CTAF) 257.75</b>	GND CON <b>121.8 239.25</b>	ASR/PAR
-----------------------------	-------------------------------	--------------------------------------	--------------------------------	---------



Helicopter visibility reduction below 3/4 mile not authorized.  
 When R-3803C is active, procedure entry from COCOS not authorized. Expect radar vectors to final.  
 NoPT for arrival at COCOS on V212 eastbound.  
 RADAR required for arrivals at DXB NDB and CATVO.

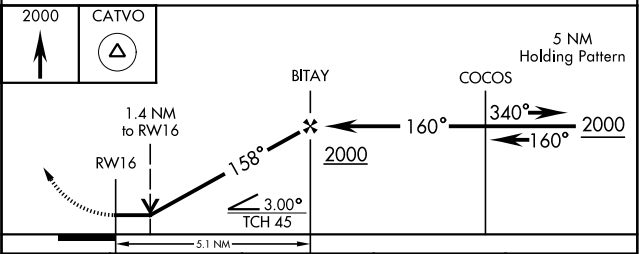


ELEV	330	TDZE	328
Rwy 16 ldg 3913'			



CAUTION:  
Rwy 34 apch end elev is 278.

HIRL Rwy 16-34  
REIL Rwy 16-34



CATEGORY	A	B	C	D
LNVA MDA	800-1	472 (500-1)	800-1 3/8 472 (500-1 3/8)	940-2 (500-1 3/8)
CIRCLING	880-1	550 (600-1)	880-1 1/2 550 (600-1 1/2)	940-2 610 (700-2)

FORT JOHNSON, LOUISIANA

31° 03' N-93° 11' W

MAKS AAF (KPOE)

Amdt 2 05OCT23

# RNAV (GPS) RWY 16

SC-4, 23 JAN 2025 to 20 FEB 2025

SC-4, 23 JAN 2025 to 20 FEB 2025