

VOR RWY 16

MAKS AAF (KPOE)

VOR FXU 108.4	APCH CRS 158°	Rwy ldg TDZE Arpt Elev 3913 328 330
-------------------------	-------------------------	---

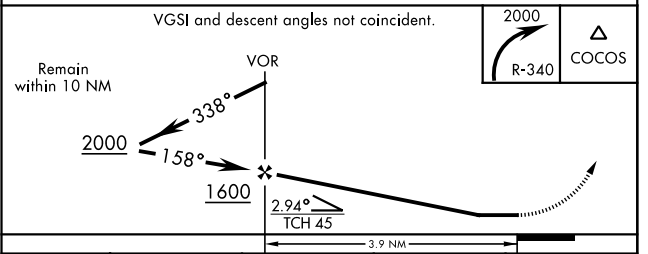
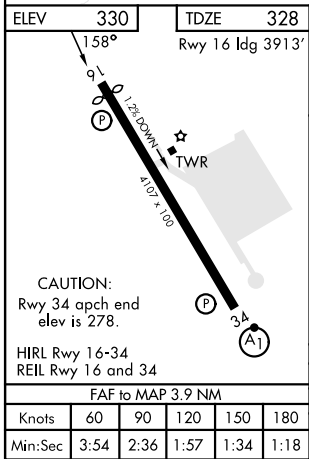
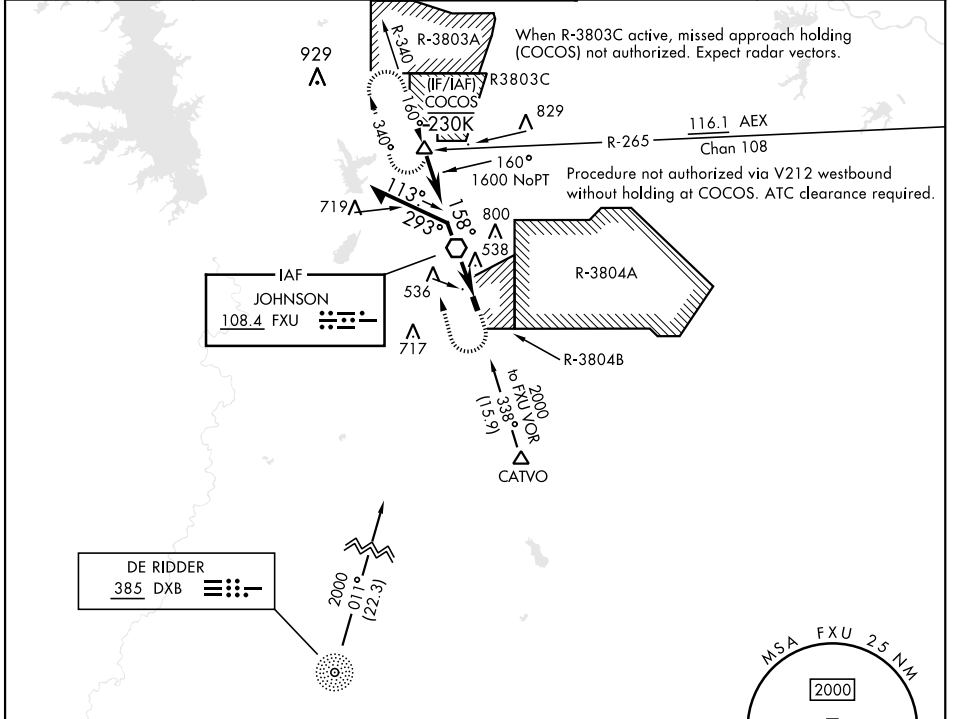
[USA]

RADAR required for arrivals at DXB NDB and CATVO.

MISSED APPROACH: Climbing right turn to 2000 on FXU
VOR R-340 to COCOS int and hold.

▼ Helicopter visibility reduction below 3/4 miles NA.

ATIS 134.85 282.2	APP CON 123.7 261.3	TOWER* 119.0 (CTAF) 257.75	GND CON 121.8 239.25	ASR/PAR
-----------------------------	-------------------------------	---	--------------------------------	---------



CATEGORY	A		B		C		D	
	S-16	820-1	492	(500-1)	820-1 ³ / ₈	492	(500-1 ³ / ₈)	
CIRCLING		880-1	550	(600-1)	880-1 ¹ / ₂		880-2	550 (600-2)

VOR RWY 16

SC-4, 23 JAN 2025 to 20 FEB 2025

SC-4, 23 JAN 2025 to 20 FEB 2025