

FREDERICK
109.0 FDK

MARTINSBURG
112.1 MRB
Chan 58

KESSEL
110.8 ESL
Chan 45

LINDEN
114.3 LDN
Chan 90

CHARLESTON
117.4 HVQ
Chan 121

ARMEL
113.5 AML
Chan 82

CASANOVA
116.3 CSN
Chan 110

MONTEBELLO
115.3 MOL
Chan 100

BECKLEY
117.7 BKW
Chan 124

POTOMAC APP CON
120.45 306.925
IAD D-ATIS
134.85
JYO AWOS-3
125.225

NOTE: Prohibited area (P-56)
north of DCA - avoid -
surface to 18000.
NOTE: RADAR required.
NOTE: DME required.

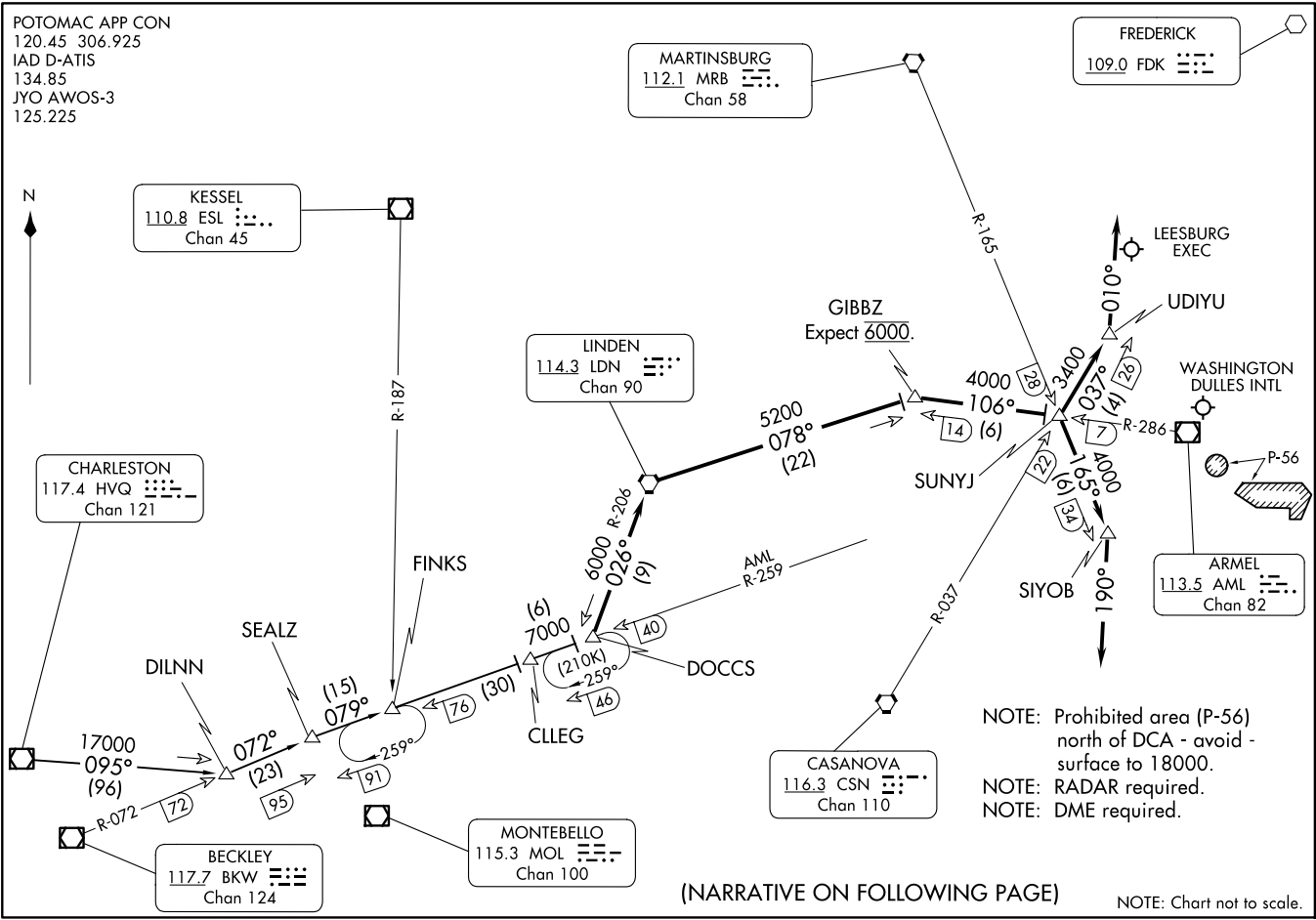
(NARRATIVE ON FOLLOWING PAGE)

NOTE: Chart not to scale.



DOCCS THREE ARRIVAL
(DOCCS.DOCCS3) 25APR19

WASHINGTON, DC



DOCCS THREE ARRIVAL

WASHINGTON, DC

ARRIVAL ROUTE DESCRIPTION

CHARLESTON TRANSITION (HVQ.DOCCS3): From over HVQ VOR/DME on HVQ R-095 to DILNN, then on BKW R-072 to SEALZ, then on AML R-259 to DOCCS. Thence....

LANDING IAD RUNWAYS 1C, 1L, 1R, 30: From over DOCCS on LDN VORTAC R-206 to LDN VORTAC, then on LDN VORTAC R-078 to GIBBZ, then on AML VOR/DME R-286 to SUNYJ, then on MRB VORTAC R-165 to SIYOB, then fly heading 190°, expect radar vectors to final approach course.

LANDING IAD RUNWAYS 19C, 19L, 19R: From over DOCCS on LDN VORTAC R-206 to LDN VORTAC, then on LDN VORTAC R-078 to GIBBZ, then on AML VOR/DME R-286 to SUNYJ, then on CSN VORTAC R-037 to UDIYU, then fly heading 010°, expect radar vectors to final approach course.

LANDING IAD RUNWAY 12: From over DOCCS, expect radar vectors to final approach course.

LANDING JYO: From over DOCCS on LDN VORTAC R-206 to LDN VORTAC, expect radar vectors to final approach course.

NE-3, 23 JAN 2025 to 20 FEB 2025

NE-3, 23 JAN 2025 to 20 FEB 2025