

(LIRCH.HYPER9)

21MAR24

HYPER NINE ARRIVAL (RNAV) Transition Routes

WASHINGTON, DC

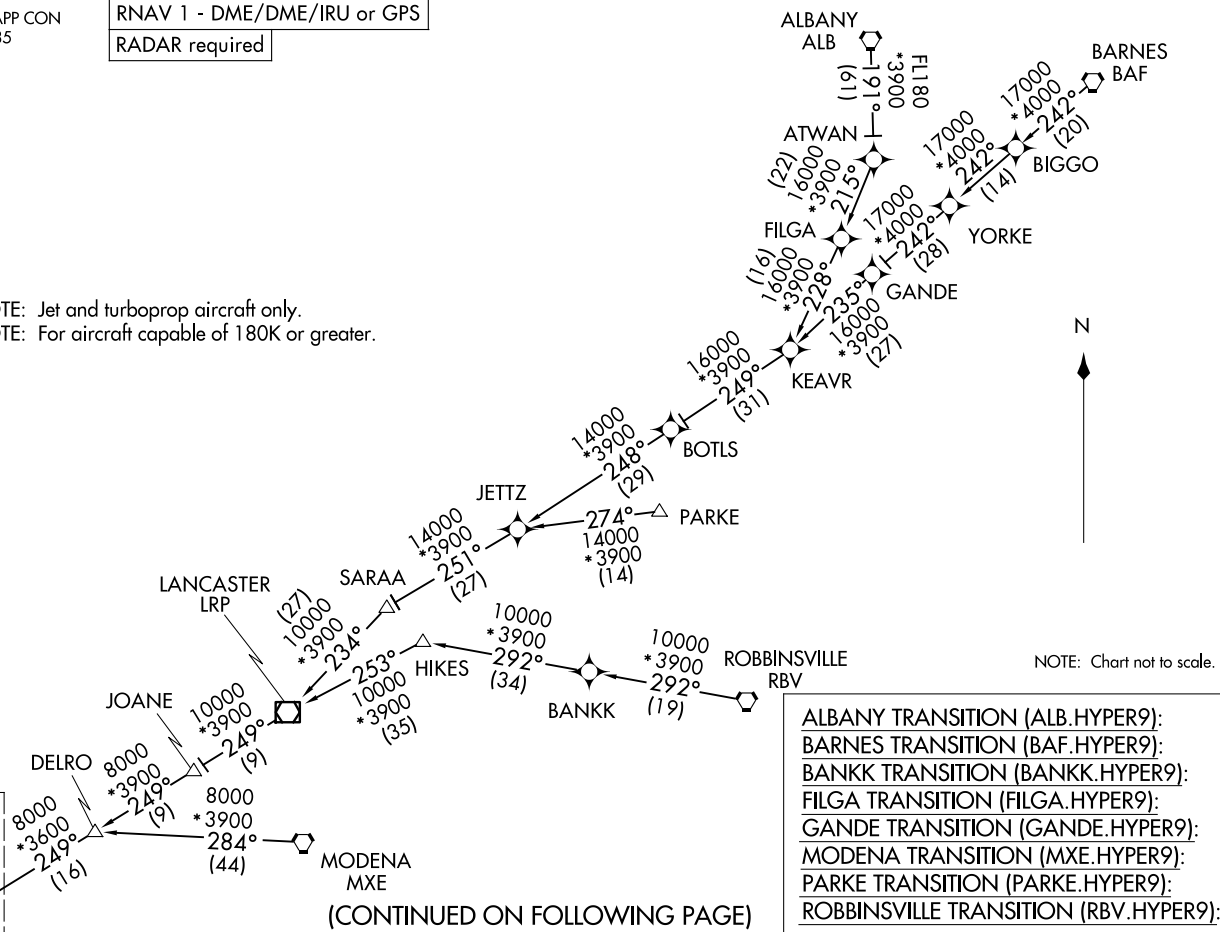
POTOMAC APP CON
133.0 288.35
IAD D-ATIS
134.85
HEF ATIS
125.175
KNYG ATIS
263.15

RNAV 1 - DME/DME/IRU or GPS

RADAR required

NOTE: Jet and turboprop aircraft only.
NOTE: For aircraft capable of 180K or greater.

See following page for arrival routes.



NOTE: Chart not to scale.

- ALBANY TRANSITION (ALB.HYPER9):
- BARNES TRANSITION (BAF.HYPER9):
- BANKK TRANSITION (BANKK.HYPER9):
- FILGA TRANSITION (FILGA.HYPER9):
- GANDE TRANSITION (GANDE.HYPER9):
- MODENA TRANSITION (MXE.HYPER9):
- PARKE TRANSITION (PARKE.HYPER9):
- ROBBINSVILLE TRANSITION (RBV.HYPER9):

(CONTINUED ON FOLLOWING PAGE)

(LIRCH.HYPER9)

24081

HYPER NINE ARRIVAL (RNAV) Transition Routes

WASHINGTON, DC

AL-5100 (FAA)

HYPER NINE ARRIVAL (RNAV) Arrival Routes

WASHINGTON, DC

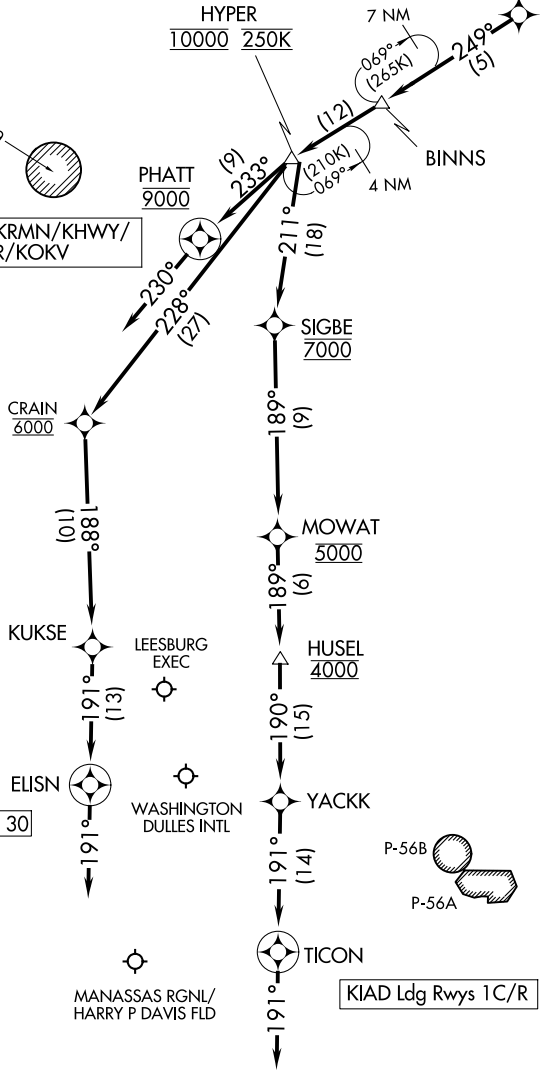
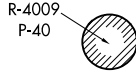
POTOMAC APP CON
 133.0 288.35
 IAD D-ATIS
 134.85
 HEF ATIS
 125.175
 KNYG ATIS
 263.15

RNAV 1 - DME/DME/IRU or GPS

RADAR required

Ldg KNYG/KCJR/KEZF/KRMN/KHWY/
 KHFEF/KMRB/KJYO/KFRR/KOKV
 KIAD Ldg Rwys 19L/C/R

NOTE: Jet and turboprop aircraft only.
 NOTE: For aircraft capable of 180K or greater.



NE-3, 23 JAN 2025 to 20 FEB 2025

NE-3, 23 JAN 2025 to 20 FEB 2025

(CONTINUED ON FOLLOWING PAGE)

NOTE: Chart not to scale.

HYPER NINE ARRIVAL (RNAV) Arrival Routes

WASHINGTON, DC

HYPER NINE ARRIVAL (RNAV)

WASHINGTON, DC

ARRIVAL ROUTE DESCRIPTION

KIAD: From LIRCH on track 249° to BINNS, then on track 249° to cross HYPER at 10000 and at 250K.

LANDING KIAD RWY 1C/R: From HYPER on track 211° to cross SIGBE at 7000, then on track 189° to cross MOWAT at 5000, then on track 189° to cross HUSEL at 4000, then on track 190° to YACKK, then on track 191° to TICON, then on track 191°. Expect RADAR vectors to final approach course.

LANDING KIAD RWY 1L, 30: From HYPER on track 228° to cross CRAIN at 6000, then on track 188° to KUKSE, then on track 191° to ELISN, then on track 191°. Expect RADAR vectors to final approach course.

LANDING KIAD RWY 19L/C/R: From HYPER on track 233° to cross PHATT at 9000, then on track 230°. Expect RADAR vectors to final approach course.

LANDING ALL SATELLITE AIRPORTS: From LIRCH on track 249° to BINNS, then on track 249° to cross HYPER at 10000 and at 250K, then on track 233° to cross PHATT at 9000, then on track 230°. Expect RADAR vectors to final approach course.

NE-3, 23 JAN 2025 to 20 FEB 2025

NE-3, 23 JAN 2025 to 20 FEB 2025