

WAAS CH <b>72941</b> <b>W15A</b>	APP CRS <b>148°</b>	Rwy ldg TDZE Apt Elev	<b>5503</b> <b>712</b> <b>712</b>
--	------------------------	-----------------------------	---

# RNAV (GPS) RWY 15

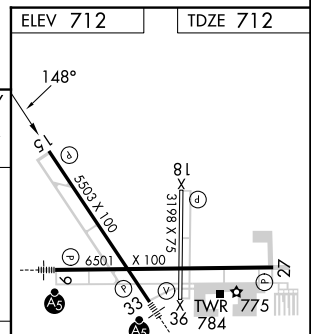
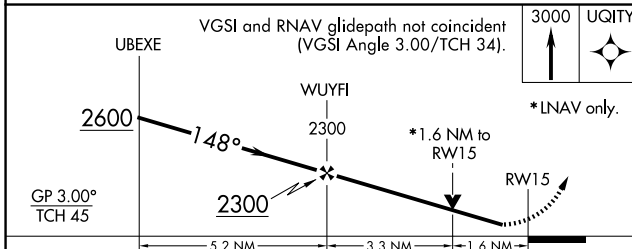
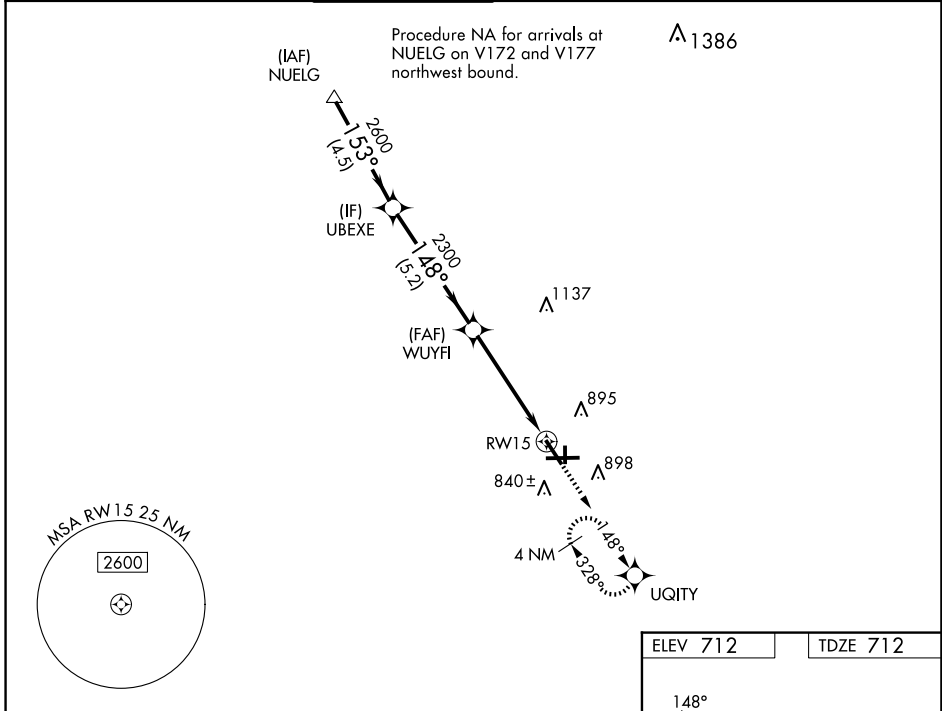
AURORA MUNI (A.R.R.)

RNP APCH - GPS.

▼ For uncompensated Baro-VNAV systems, LNAV/VNAV NA below -20°C or above 54°C. Rwy 15 helicopter visibility reduction below ¼ SM NA.

MISSED APPROACH: Climb to 3000 direct UQITY and hold, continue climb-in-hold to 3000.

ATIS <b>125.85</b>	CHICAGO APP CON <b>133.5 349.0</b>	<b>AURORA TOWER*</b> <b>120.6 (CTAF) 0</b>	GND CON <b>121.7</b>	CLNC DEL <b>121.7</b> (When tower closed)	UNICOM <b>122.95 123.5</b>
-----------------------	---------------------------------------	---	-------------------------	---	-------------------------------



CATEGORY	A	B	C	D
LPV DA		962-¾	250 (300-¾)	
LNAV/VNAV DA		962-¾	250 (300-¾)	
LNAV MDA	1260-1	548 (600-1)	1260-1½	548 (600-1½)
CIRCLING	1260-1	548 (600-1)	1300-1⅞	1320-2
			588 (600-1½)	608 (700-2)

HIRL Rwy 15-33 and 9-27 0

MIRL Rwy 18-36 0

REIL Rwy 15, 18, 27, and 36 0

EC-3, 23 JAN 2025 to 20 FEB 2025

EC-3, 23 JAN 2025 to 20 FEB 2025