

WAAS CH <b>45522</b> <b>W09A</b>	APP CRS <b>090°</b>	Rwy Idg <b>6501</b> TDZE <b>707</b> Apt Elev <b>712</b>
--	------------------------	---

# RNAV (GPS) RWY 9

AURORA MUNI (A.R.R.)

RNP APCH - GPS.

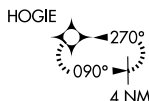
For uncompensated Baro-VNAV systems, LNAV/VNAV NA below -20°C or above 54°C.  
For inop APCH, increase LNAV Cat C/D visibility to 1 3/8 SM.



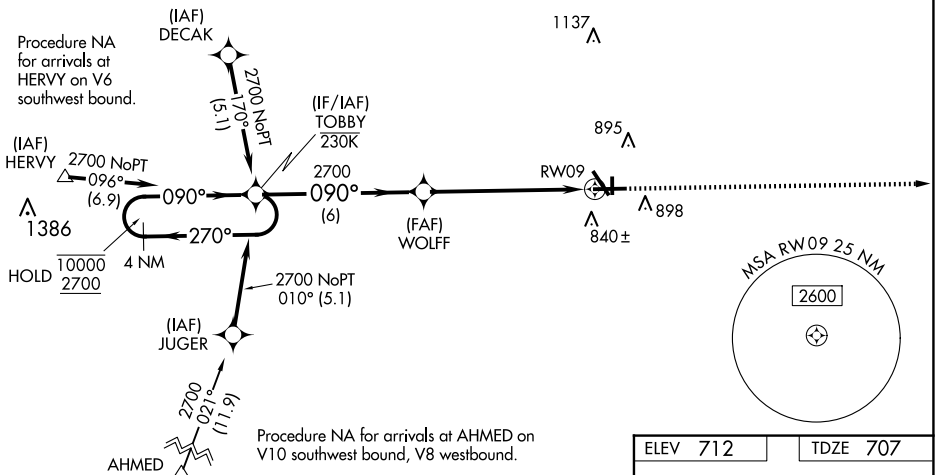
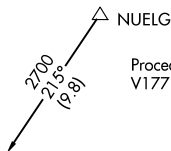
MISSED APPROACH:  
Climb to 2500 direct  
HOGIE and hold.

ATIS <b>125.85</b>	CHICAGO APP CON <b>133.5 349.0</b>	AURORA TOWER* <b>120.6</b> (CTAF) <b>0</b>	GND CON <b>121.7</b>	CLNC DEL <b>121.7</b> (When tower closed)	UNICOM <b>122.95 123.5</b>
-----------------------	---------------------------------------	---	-------------------------	---	-------------------------------

MISSED APCH FIX

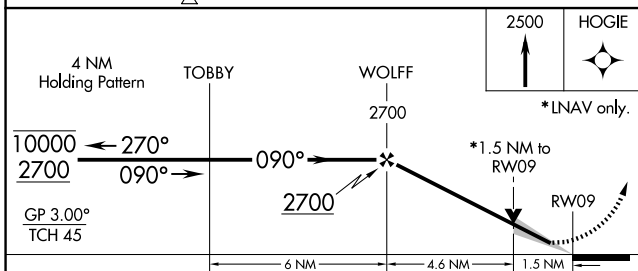


Procedure NA for arrivals at NUELG on V177 northwest bound, V172 eastbound.

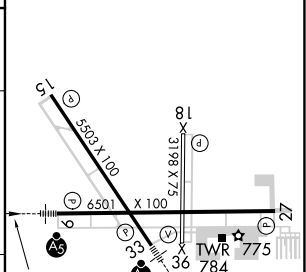


EC-3, 23 JAN 2025 to 20 FEB 2025

EC-3, 23 JAN 2025 to 20 FEB 2025



ELEV 712	TDZE 707
----------	----------



CATEGORY	A	B	C	D
LPV DA		957-1/2	250 (300-1/2)	
LNAV/VNAV DA		1035-1/2	328 (400-1/2)	
LNAV MDA	1220-1/2	513 (600-1/2)	1220-1	513 (600-1)
CIRCLING	1220-1	508 (600-1)	1300-1 1/2 588 (600-1 1/2)	1320-2 608 (700-2)

MIRL Rwy 18-36 **0**  
HIRL Rwy 15-33 and 9-27 **0**  
REIL Rwy 15, 18, 27, and 36 **0**