

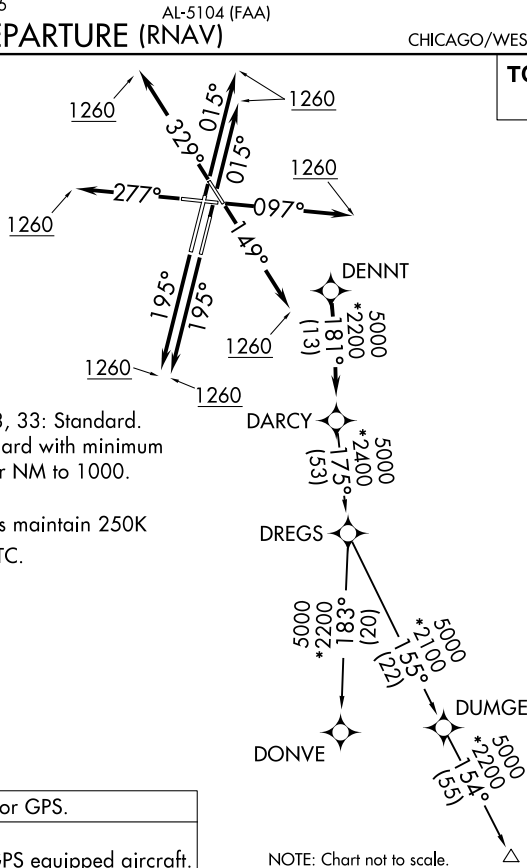
(DARCY7.DARCY) 24305

DARCY SEVEN DEPARTURE (RNAV)

DUPAGE (DPA)
CHICAGO/WEST CHICAGO, ILLINOIS

CHICAGO DEP CON
133.5 349.0
ATIS
132.075
GND CON
121.8
DUPAGE TOWER
120.9 257.8

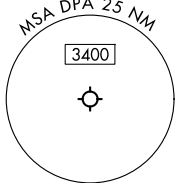
**TOP ALTITUDE:
3000**



TAKEOFF MINIMUMS:

Rwys 2L/R, 10, 20L/R, 28, 33: Standard.
Rwy 15: 300-1 $\frac{3}{8}$ or standard with minimum climb of 205' per NM to 1000.

NOTE: Turbojet departures maintain 250K until advised by ATC.



RNAV 1 - DME/DME/IRU or GPS.
RADAR required.
RADAR required for non-GPS equipped aircraft.

NOTE: Chart not to scale.

DEPARTURE ROUTE DESCRIPTION

- TAKEOFF RUNWAYS 2L/R:** Climb on heading 015° to 1260, then as assigned by ATC, for vectors to DENNT, thence
- TAKEOFF RUNWAY 10:** Climb on heading 097° to 1260, then as assigned by ATC, for vectors to DENNT, thence
- TAKEOFF RUNWAY 15:** Climb on heading 149° to 1260, then as assigned by ATC, for vectors to DENNT, thence
- TAKEOFF RUNWAYS 20L/R:** Climb on heading 195° to 1260, then as assigned by ATC, for vectors to DENNT, thence
- TAKEOFF RUNWAY 28:** Climb on heading 277° to 1260, then as assigned by ATC, for vectors to DENNT, thence
- TAKEOFF RUNWAY 33:** Climb on heading 329° to 1260, then as assigned by ATC, for vectors to DENNT, thence

. . . . on track 181° to DARCY, then on (transition), maintain 3000.
Expect filed altitude 10 minutes after departure.

DONVE TRANSITION (DARCY7.DONVE):
SCOTO TRANSITION (DARCY7.SCOTO):

DARCY SEVEN DEPARTURE (RNAV)
(DARCY7.DARCY) 31OCT24

CHICAGO/WEST CHICAGO, ILLINOIS
DUPAGE (DPA)

EC-3, 23 JAN 2025 to 20 FEB 2025

EC-3, 23 JAN 2025 to 20 FEB 2025