

WAAS CH <b>53618</b> <b>W10A</b>	APP CRS <b>097°</b>	Rwy Idg <b>4750</b> TDZE <b>756</b> Apt Elev <b>759</b>
--	------------------------	---

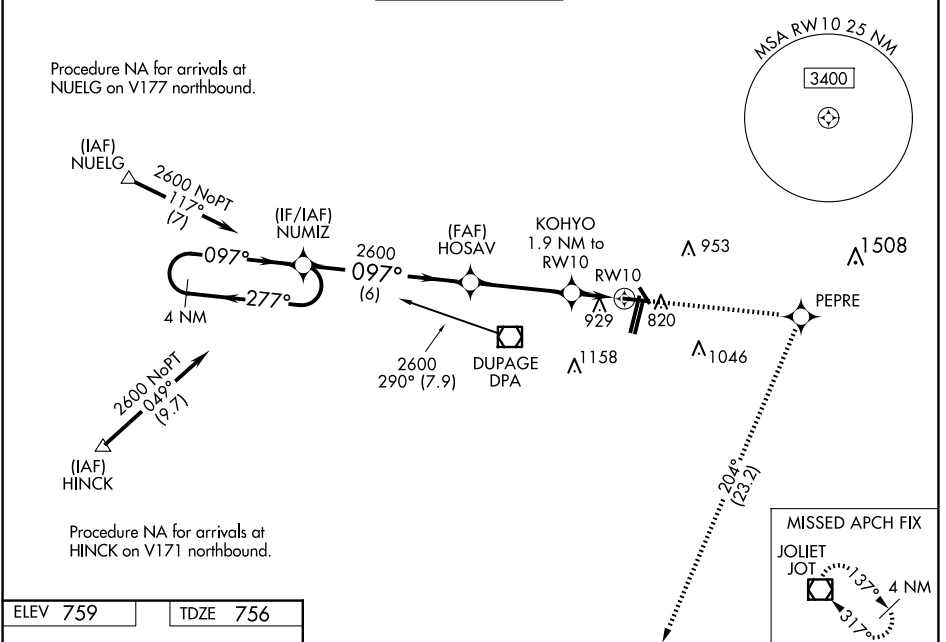
# RNAV (GPS) RWY 10

DUPAGE (DPA)

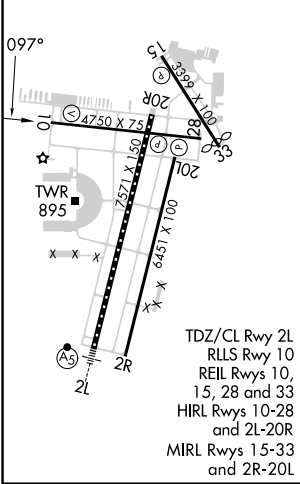
**⚠** For uncompensated Baro-VNAV systems, LNAV/VNAV NA below -16°C (4°F) or above 54°C (130°F). DME/DME RNP-0.3 NA. When local altimeter setting not received, use Aurora altimeter setting: increase LPV DA to 993 feet and LNAV/VNAV DA to 1281; increase all MDA 40 feet and visibility LNAV Cat D and Circling Cat C/D ¼ SM. VDP and Baro-VNAV NA when using Aurora altimeter setting. Circling Rwy 15, 28, 33 NA at night.

**MISSED APPROACH:** Climb to 2600 direct PEPRE and 2600 direct PEPRE and right turn on track 204° to JOT VOR/DME and hold.

ATIS <b>132.075</b>	CHICAGO APP CON <b>133.5 349.0</b>	DUPAGE TOWER <b>120.9 257.8</b>	GND CON <b>121.8</b>	CLNC DEL <b>119.75</b>
------------------------	---------------------------------------	------------------------------------	-------------------------	---------------------------



ELEV 759	TDZE 756
----------	----------



4 NM Holding Pattern	2600	PEPRE	JOT
	↑	✦	tr 204°
*LNAV only			
NUMIZ	HOSAV	KOHYO	
2600	2600	1.9 NM to RWY 10	
2600 ← 277°	← 097°	← 097°	← 097°
GP 3.00°	2600	*1.2 NM to RWY 10	RWY 10
TCH 50		*1400	
	6 NM	3.7 NM	0.7 1.2 NM
CATEGORY	A	B	C
LPV DA		956-¾	200 (200-¾)
LNAV/VNAV DA		1244-1¾	488 (500-1¾)
LNAV MDA	1180-1	424 (500-1)	1180-1¼ 424 (500-1¼)
CIRCLING	1260-1 501 (600-1)	1360-1 601 (700-1)	1460-2 701 (800-2) 1460-2¼ 701 (800-2¼)

EC-3, 23 JAN 2025 to 20 FEB 2025

EC-3, 23 JAN 2025 to 20 FEB 2025