

WAAS CH <b>45604</b> <b>W15A</b>	APP CRS <b>156°</b>	Rwy Idg <b>5950</b> TDZE <b>4264</b> Apt Elev <b>4317</b>
----------------------------------------	------------------------	-----------------------------------------------------------------

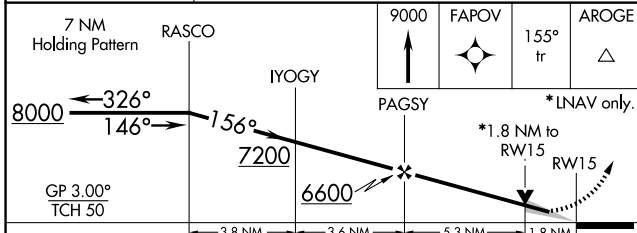
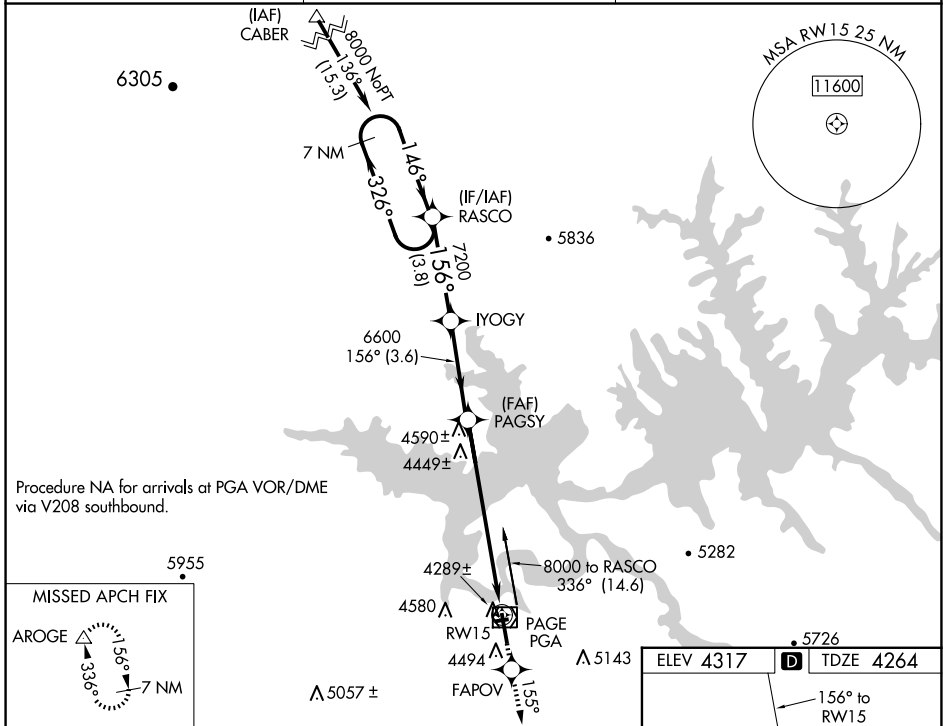
# RNAV (GPS) RWY 15

PAGE MUNI (PGA)

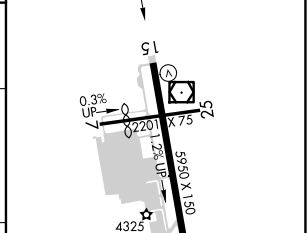
**▼** For uncompensated Baro-VNAV systems, LNAV/VNAV NA below -23°C (-9°F) or above 41°C (105°F). DME/DME RNP-0.3 NA. Circling NA to Rwy 7-25

MISSED APPROACH: Climb to 9000 direct FAPOV and via 155° track to AROGE and hold, continue climb-in-hold to 9000.

ASOS <b>120.625</b>	DENVER CENTER <b>127.55 256.875</b>	UNICOM <b>122.8 (CTAF) 0</b>
------------------------	----------------------------------------	---------------------------------



ELEV 4317	<b>D</b>	TDZE 4264
-----------	----------	-----------



CATEGORY	A	B	C	D
LPV DA		4599-1¼	335 (300-1¼)	
LNAV/VNAV DA		4670-1½	406 (400-1½)	
LNAV MDA	4860-1	596 (600-1)	4860-1½	4860-1¾
			596 (600-1½)	596 (600-1¾)
CIRCLING	4860-1	4880-1	5080-2¼	5360-3
	543 (600-1)	563 (600-1)	763 (800-2¼)	1043 (1100-3)

REIL Rws 15 and 33 0

MIRL Rwy 15-33 0

SW-4, 23 JAN 2025 to 20 FEB 2025

SW-4, 23 JAN 2025 to 20 FEB 2025