

VORTAC SBV <b>110.4</b> Chan 41	APP CRS <b>081°</b>	Rwy Idg TDZE Apt Elev	<b>N/A</b> <b>N/A</b> <b>420</b>
---------------------------------------	------------------------	-----------------------------	--

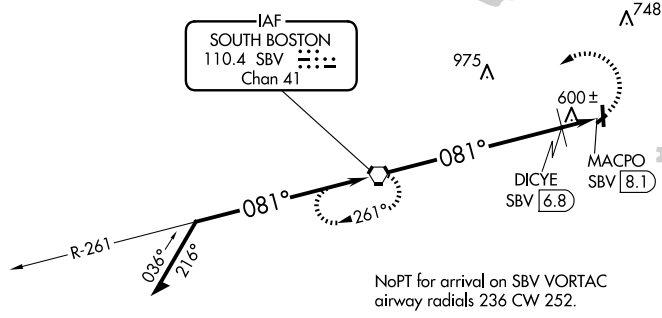
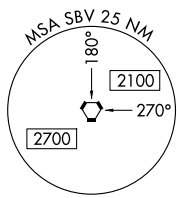
**VOR-A**

WILLIAM M TUCK (W78)

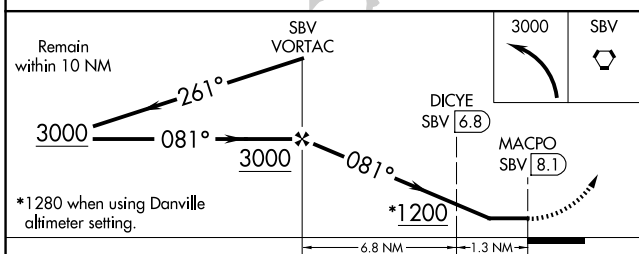
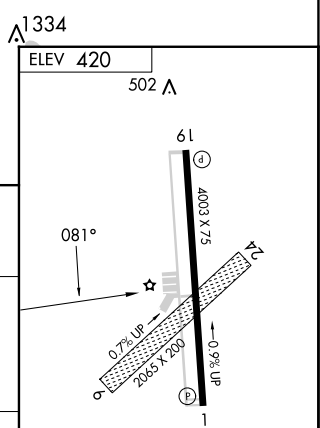
**⚠** Night landing: Rwy 19 NA. Helicopter visibility reduction below 1 SM NA. When local altimeter setting not received, use Danville altimeter setting and increase all MDA 80 feet; increase all Cats visibility and DICYE fix minimums Cat C visibility ¼ mile. Circling NA to Rwy 6-24.

**MISSED APPROACH:**  
Climbing left turn to 3000  
direct SBV VORTAC and hold.

AWOS-3 <b>119.425</b>	WASHINGTON CENTER <b>124.05 352.0</b>	UNICOM <b>122.8 (CTAF) 0</b>
--------------------------	--	---------------------------------



NoPT for arrival on SBV VORTAC  
airway radials 236 CW 252.



CATEGORY	A	B	C	D	MIRL Rwy 1-19 0 REIL Rws 1 and 19 0	
	1200-1	780 (800-1)	1200-2¼ 780 (800-2¼)	NA		
DICYE FIX MINIMUMS						
CIRCLING	960-1	540 (600-1)	1060-1¾ 640 (700-1¾)	NA	FAF to MAP 8.1 NM	
	Knots	60	90	120	150	180
	Min:Sec	8:06	5:24	4:03	3:14	2:42

**VOR-A**

NE-3, 23 JAN 2025 to 20 FEB 2025

NE-3, 23 JAN 2025 to 20 FEB 2025