

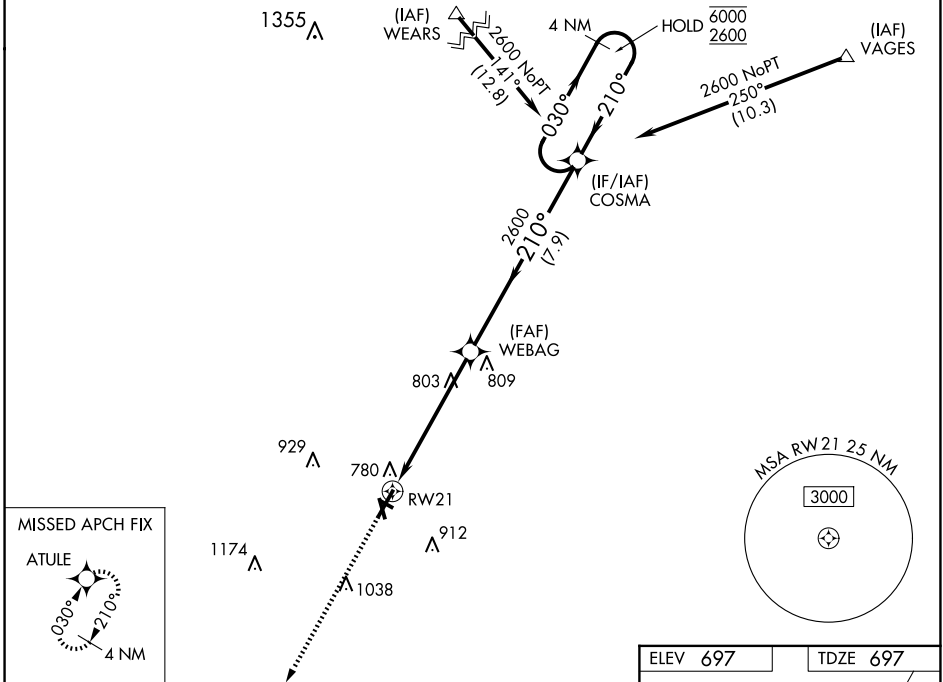
WAAS CH 58004 W21A	APP CRS 210°	Rwy Idg 6006 TDZE 697 Apt Elev 697
--	------------------------	---

RNAV (GPS) RWY 21

VERMILION RGNL (D.V)

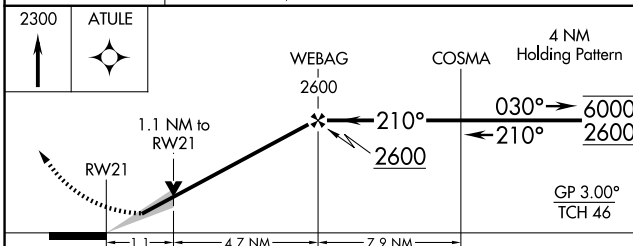
RNP APCH - GPS.		MALSR	MISSED APPROACH: Climb to 2300 direct ATULE and hold.
<p>⚠ Circling NA to Rwys 12 and 30. For uncompensated Baro-VNAV systems, LNAV/VNAV NA below -16°C or above 54°C. For inop ALS, increase LPV all Cats visibility to 1 SM and LNAV Cat D visibility to 1 1/4 SM.</p>			

AWOS-3 119.275	CHAMPAIGN APP CON ★ 121.35 285.65	CLNC DEL 121.7	UNICOM 122.7 (CTAF)
--------------------------	---	--------------------------	-------------------------------



EC-3, 23 JAN 2025 to 20 FEB 2025

EC-3, 23 JAN 2025 to 20 FEB 2025



ELEV 697	TDZE 697
<p>2300 ↑ ATULE</p>	
<p>1.1 NM to RWY 21</p>	
<p>4.7 NM 7.9 NM</p>	
CATEGORY	A B C D
LPV DA	990-1/2 293 (300-1/2)
LNAV/VNAV DA	1069-3/4 372 (400-3/4)
LNAV MDA	1080-1/2 383 (400-1/2) 1080-1 383 (400-1)
CIRCLING	1160-1 463 (500-1) 1240-1/2 543 (600-1/2) 1340-2 643 (700-2)

