

RNAV (GPS) RWY 3

VERMILION RGNL (DNTV)

APP CRS 030°	Rwy Idg 6006
	TDZE 674
	Apt Elev 697

RNP APCH - GPS.

▼ Circling NA to Rwy 12 and 30.
▲ Rwy 3 helicopter visibility reduction below ¾ SM NA.

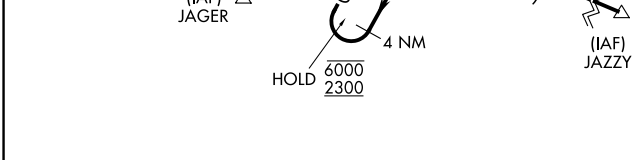
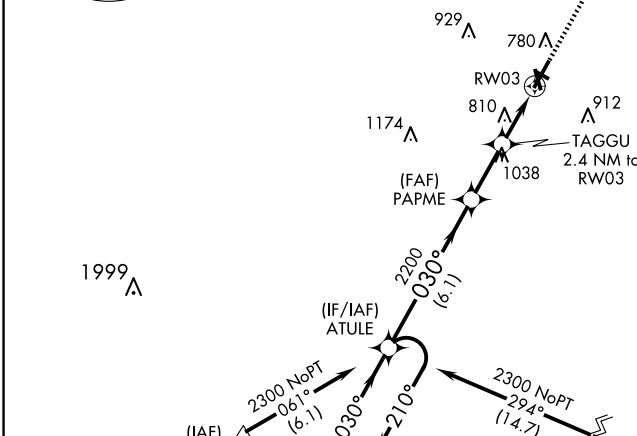
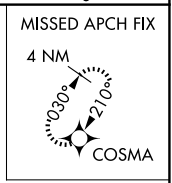
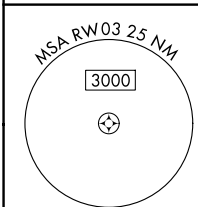
MISSED APPROACH: Climb to 2600 direct COSMA and hold.

AWOS-3
119.275

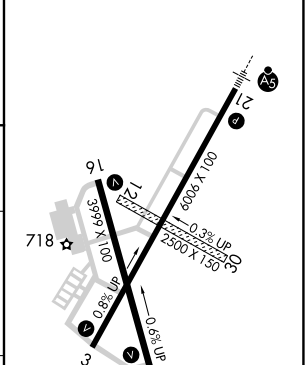
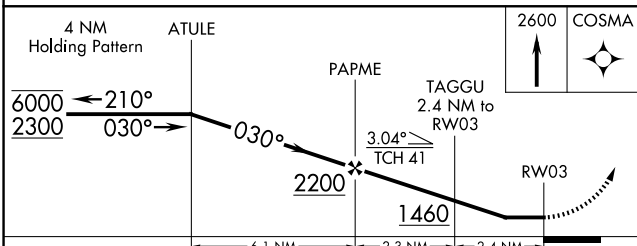
CHAMPAIGN APP CON ★
121.35 285.65

CLNC DEL
121.7

UNICOM
122.7 (CTAF) 0



ELEV 697	TDZE 674
----------	----------



CATEGORY	A	B	C	D
LNAV MDA	1120-1	446 (500-1)	1120-1½ 446 (500-1½)	1120-1½ 446 (500-1½)
CIRCLING	1160-1	463 (500-1)	1240-1½ 543 (600-1½)	1340-2 643 (700-2)

HIRL Rwy 3-21 1
MIRL Rwy 16-34 1
REIL Rwy 16 and 34 1

EC-3, 23 JAN 2025 to 20 FEB 2025

EC-3, 23 JAN 2025 to 20 FEB 2025