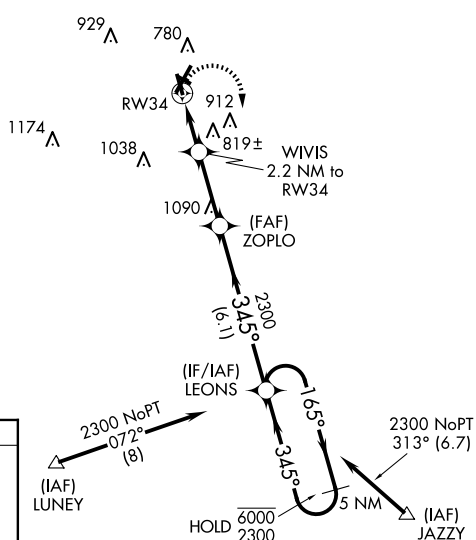
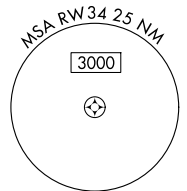


APP CRS 345°	Rwy Idg TDZE Apt Elev	3999 667 697
------------------------	-----------------------------	---

RNAV (GPS) RWY 34

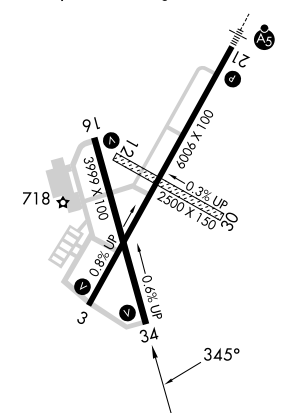
VERMILION RGNL (DNV)

RNP APCH - GPS.		MISSED APPROACH: Climbing right turn to 2300 direct LEONS and hold.	
▽ Circling NA to Rwy 12 and 30. ▲ Rwy 34 helicopter visibility reduction below ¾ SM NA.		AWOS-3 119.275	CHAMPAIGN APP CON * 121.35 285.65
		CLNC DEL 121.7	UNICOM 122.7 (CTAF)



1999
▲

ELEV 697	TDZE 667
HIRL Rwy 3-21	
MIRL Rwy 16-34	
REIL Rwy 16 and 34	



2300	LEONS	VGSI and descent angles not coincident (VGSI Angle 3.00/TCH 14).		
1400	WIVIS	ZOPLO	LEONS	
	2.2 NM to RWY34		5 NM Holding Pattern	
	≤3.05° TCH 40			
	2300	345°	165° → 6000	
			← 345° 2300	
	2.2 NM	2.8 NM	6.1 NM	
CATEGORY	A	B	C	D
LNAV MDA	1080-1	413 (400-1)	1080-1¼	413 (400-1¼)
CIRCLING	1160-1	463 (500-1)	1240-1½	1340-2
			543 (600-1½)	643 (700-2)

EC-3, 23 JAN 2025 to 20 FEB 2025

EC-3, 23 JAN 2025 to 20 FEB 2025