

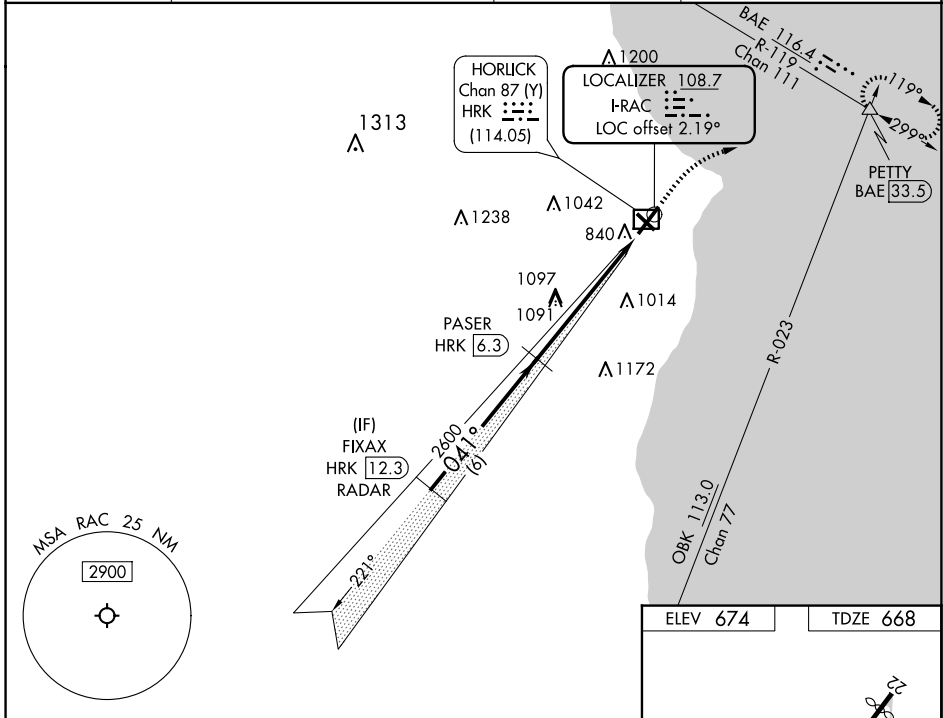
LOC I-RAC <b>108.7</b>	APP CRS <b>041°</b>	Rwy Idg <b>5840</b>
		TDZE <b>668</b>
		Apt Elev <b>674</b>

# ILS or LOC RWY 4

BATTEN INTL (RAC)

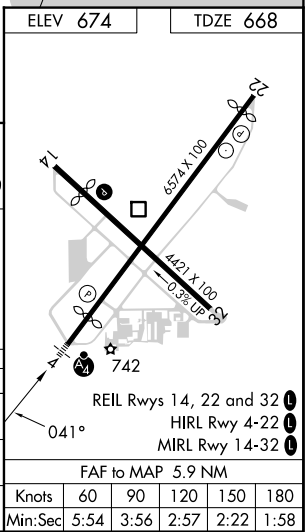
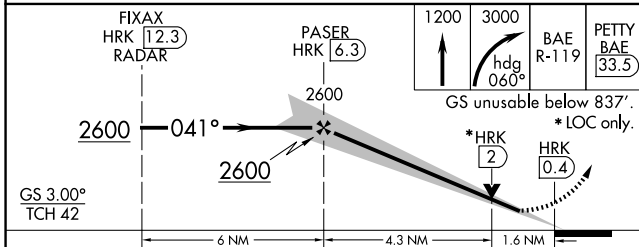
RADAR required for procedure entry. DME required.		MALSF	MISSED APPROACH: Climb to 1200 then climbing right turn to 3000 on heading 060° and BAE VOR/DME R-119 to PETTY/BAE 33.5 DME and hold, continue climb-in-hold to 3000.
<p>⚠ Circling Rwy 14 NA at night.</p> <p>⚠ Rwy 4 helicopter visibility reduction below ¾ SM NA. Inop table does not apply to S-ILS 4.</p> <p>DME from HRK DME. Simultaneous reception of I-RAC and HRK DME required.</p>			

ASOS <b>121.425</b>	MILWAUKEE APP CON <b>135.875 317.725</b>	CLNC DEL <b>120.15</b>	UNICOM <b>123.075 (CTAF) 0</b>
------------------------	---	---------------------------	-----------------------------------



EC-3, 23 JAN 2025 to 20 FEB 2025

EC-3, 23 JAN 2025 to 20 FEB 2025



CATEGORY	A	B	C	D
S-ILS 4	923-¾		255 (300-¾)	
S-LOC 4	1220-¾ 552 (600-¾)		1220-1⅓ 552 (600-1⅓)	
CIRCLING	1220-1 546 (600-1)		1380-2 706 (800-2)   1380-2¼ 706 (800-2¼)	