

WAAS CH 53516 W22A	APP CRS 219°	Rwy Idg 6184 TDZE 666 Apt Elev 674
----------------------------------------	------------------------	---------------------------------------------------------------

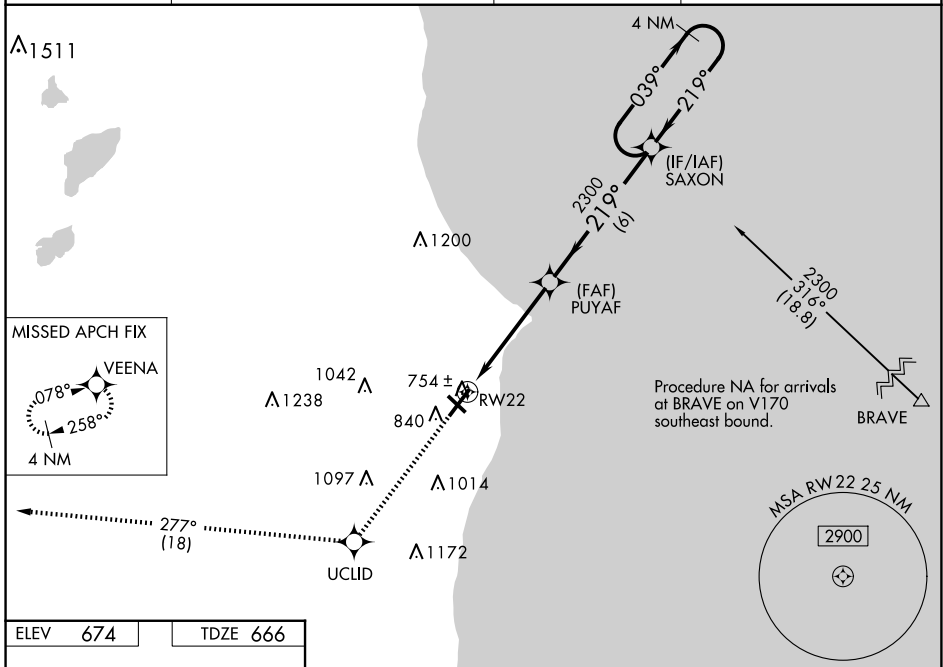
RNAV (GPS) RWY 22

BATTEN INTL (RAC)

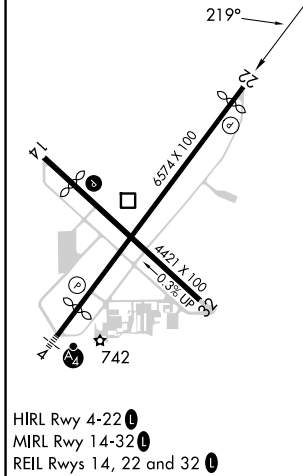
⚠ For uncompensated Baro-VNAV systems, LNAV/VNAV NA below -19°C (-2°F) or above 54°C (130°F).
⚠ DME/DME RNP-0.3 NA. When local altimeter setting not received, use General Mitchell Intl altimeter setting: increase LPV DA to 984 and all visibilities $\frac{1}{8}$ SM; increase LNAV/VNAV DA to 1032 and all visibilities $\frac{1}{4}$ SM; increase all MDA 40 feet and LNAV Cat C and D visibility $\frac{1}{8}$ SM and Circling Cat C and D visibility $\frac{1}{4}$ SM. Circling Rwy 14 NA at night. Rwy 22 helicopter visibility reduction below $\frac{1}{4}$ SM NA. Baro-VNAV and VDP NA when using General Mitchell Intl altimeter setting.

MISSED APPROACH:
 Climb to 3000 direct UCLID and track 277° to VEENA and hold.

ASOS 121.425	MILWAUKEE APP CON 135.875 317.725	CLNC DEL 120.15	UNICOM 123.075 (CTAF) 0
------------------------	---------------------------------------------	---------------------------	-----------------------------------



ELEV 674	TDZE 666
----------	----------



3000	UCLID	tr 277°	VEENA	VGSI and RNAV glidepath not coincident (VGSI Angle 3.00/TCH 46).	4 NM Holding Pattern
			PUYAF		SAXON
*LNAV only.					
	RW22	*1 NM to RW22	2300	219°	039° 2300 219°
		1 NM	3.9 NM	6 NM	GP 3.00° TCH 55
CATEGORY	A	B	C	D	
LPV DA		949- $\frac{7}{8}$	283 (300- $\frac{7}{8}$)		
LNAV/VNAV DA		997-1	331 (400-1)		
LNAV MDA		1020-1	354 (400-1)		
C CIRCLING	1140-1 466 (500-1)	1160-1 486 (500-1)	1380-2 706 (800-2)	1380-2 $\frac{1}{4}$ 706 (800-2 $\frac{1}{4}$)	

EC-3, 23 JAN 2025 to 20 FEB 2025

EC-3, 23 JAN 2025 to 20 FEB 2025